



AMENDMENT OF SOLICITATION
Old Hueco Tanks Rd. Improvements

The above titled solicitation is amended. **All amendments must be acknowledged on the “PROPOSAL”; failure to do so may be cause for rejection of bid.**

The date specified for receipt of offers is NOT extended:

Bid Date: August 25, 2016 @ 2:00 (MST)

Addendum No. 3
August 18, 2016

Contents:

1. **Pages 13 and 121 of the proposal are replaced with 13-A3 and 121-A3. The updated sheets reflect revisions to VIVDS item quantities.**
2. **“Unit Price Schedule: Base Bid” sheets are replaced with sheets 1-A3 thru 10-A3. Revised Key numbers 87, 88 and 89 to show correct unit of measure (LF). Revised Key numbers 128 and 130 to show correct quantities.**

ISSUED BY:
Camino Real Regional Mobility Authority
General Engineering Consultant

UNIT PRICE SCHEDULE: BASE BID

CONTROL: 0924-06-111

PROJECT: STP 95 (322)MM

HIGHWAY: OLD HUECO TANKS ROAD

COUNTY:EL PASO

TYPE : CONSTRUCTION OF NEW FOUR LANE RAISED MEDIAN URBAN COLLECTOR ROADWAY
(Old Hueco Tanks Road)

Key	Item No.	Item Code	Brief Description of Item	Unit	Est. Quantity	Unit Bid Price (In Figures)	Total Amount (Quantity x Unit Price) (In Figures)
1	100	6001	PREPARING ROW	AC	3.1		
2	100	6002	PREPARING ROW	STA	72		
3	110	6001	EXCAVATION (ROADWAY)	CY	11,165		
4	110	6003	EXCAVATION (SPECIAL)	CY	8,200		
5	132	6002	EMBANKMENT (FINAL) (DENS CONT) (TY A)	CY	44,304		
6	132	6007	EMBANKMENT (FINAL) (ORD COMP) (TY D)	CY	7,510		
7	OMITTED (QTY ADDED TO ITEM 132 6002)						
8	150	6002	BLADING	HR	34		
9	170	6001	IRRIGATION SYSTEM	LS	1		
10	192	6004	PLANT MATERIAL (5-GAL)	EA	180		
11	192	6013	MULCH	SY	141		
12	192	6015	LANDSCAPE EDGE	LF	1,703		
13	192	6017	VEGETATION BARRIER	SY	2,679		
14	193	6001	PLANT MAINTENANCE	MO	12		
15	193	6005	PLANT REPLACEMENT (5-GAL)	EA	36		
16	204	6003	SPRINKLING (DUST CONTROL)	MG	6		

UNIT PRICE SCHEDULE: BASE BID

CONTROL: 0924-06-111

PROJECT: STP 95 (322)MM

HIGHWAY: OLD HUECO TANKS ROAD

COUNTY:EL PASO

TYPE : CONSTRUCTION OF NEW FOUR LANE RAISED MEDIAN URBAN COLLECTOR ROADWAY
(Old Hueco Tanks Road)

Key	Item No.	Item Code	Brief Description of Item	Unit	Est. Quantity	Unit Bid Price (In Figures)	Total Amount (Quantity x Unit Price) (In Figures)
17	310	6006	PRIME COAT (CSS-1H)	GAL	8,936		
18	341	6040	D-GR HMA TY-D PG64-22	TON	13,949		
19	360	6003	CONC PVMT (CONT REINF-CRCP)(9")	SY	59,175		
20	360	6027	CURB (TYP II)	LF	27,155		
21	400	6002	STRUCT EXCAV (BOX)	CY	1,821		
22	400	6003	STRUCT EXCAV (PIPE)	CY	6,336		
23	400	6005	CEM STABIL BKFILL	CY	1,024		
24	401	6001	FLOWABLE BKFILL	CY	332		
25	402	6001	TRENCH EXCAVATION PROTECTION	LF	4,427		
26	416	6029	DRILL SHAFT (RDWY ILL POLE) (30 IN)	LF	656		
27	416	6032	DRILL SHAFT (TRF SIG POLE) (36 IN)	LF	24		
28	416	6034	DRILL SHAFT (TRF SIG POLE) (48 IN)	LF	20		
29	420	6002	CL A CONC (MISC)	CY	37		
30	420	6057	CL C CONC (WINGWALLS)	CY	229		
31	423	6006	RETAINING WALL (STONE)	SF	12,988		
32	432	6001	RIPRAP (CONC)(4 IN)	CY	236		

UNIT PRICE SCHEDULE: BASE BID

CONTROL: 0924-06-111

PROJECT: STP 95 (322)MM

HIGHWAY: OLD HUECO TANKS ROAD

COUNTY:EL PASO

TYPE : CONSTRUCTION OF NEW FOUR LANE RAISED MEDIAN URBAN COLLECTOR ROADWAY
 (Old Hueco Tanks Road)

Key	Item No.	Item Code	Brief Description of Item	Unit	Est. Quantity	Unit Bid Price (In Figures)	Total Amount (Quantity x Unit Price) (In Figures)
33	432	6002	RIPRAP (CONC)(5 IN)	CY	59		
34	432	6031	RIPRAP (STONE PROTECTION)(12IN)	CY	48		
35	450	6052	RAIL (HANDRAIL)(TY F)	LF	194		
36	462	6013	CONC BOX CULV (6 FT X 6 FT)	LF	268		
37	462	6030	CONC BOX CULV (10 FT X 6 FT)	LF	128		
38	464	6005	RC PIPE (CL III)(24 IN)	LF	5,636		
39	464	6008	RC PIPE (CL III)(36 IN)	LF	892		
40	465	6002	MANH (COMPL)(PRM)(48IN)	EA	14		
41	465	6003	MANH (COMPL)(PRM)(60IN)	EA	5		
42	465	6004	MANH (COMPL)(PRM)(72IN)	EA	7		
43	465	6020	INLET (COMPL)(PCO) (4FT)((BOTH)	EA	2		
44	465	6040	INLET (COMPL)(PCU) (5FT)((BOTH)	EA	28		
45	465	6162	INLET (COMPL)(PAZD) (FG)(5 FT X 5 FT-4 FT X 4 FT)	EA	2		
46	467	6388	SET (TY II)(24 IN)(3:1)(C)	EA	4		
47	496	6005	REMOVE STR (WINGWALL)	EA	4		
48	496	6007	REMOVE STR (PIPE)	LF	238		

UNIT PRICE SCHEDULE: BASE BID

CONTROL: 0924-06-111

PROJECT: STP 95 (322)MM

HIGHWAY: OLD HUECO TANKS ROAD

COUNTY:EL PASO

TYPE : CONSTRUCTION OF NEW FOUR LANE RAISED MEDIAN URBAN COLLECTOR ROADWAY
(Old Hueco Tanks Road)

Key	Item No.	Item Code	Brief Description of Item	Unit	Est. Quantity	Unit Bid Price (In Figures)	Total Amount (Quantity x Unit Price) (In Figures)
49	500	6001	MOBILIZATION	LS	1		
50	502	6001	BARRICADES, SIGNS, & TRAFFIC HANDLING	MO	12		
51	506	6020	CONSTRUCTION EXITS (INSTALL) (TY 1)	SY	849		
52	506	6024	CONSTRUCTION EXITS (REMOVE)	SY	849		
53	506	6038	TEMP SEDMT CONT FENCE (INSTALL)	LF	13,946		
54	506	6039	TEMP SEDMT CONT FENCE (REMOVE)	LF	13,946		
55	506	6040	BIODEG EROSN CONT LOGS (INSTL)(8")	LF	844		
56	506	6043	BIODEG EROSN CONT LOGS (REMOVE)	LF	844		
57	512	6006	PORT CTB (FUR & INST)(F-SHAPE)(TY 2)	LF	1,020		
58	512	6030	PORT CTB (MOVE)(F-SHAPE)(TY 2)	LF	810		
59	512	6054	PORT CTB (REMOVE)(F-SHAPE)(TY 2)	LF	1,020		
60	528	6001	COLORED TEXTURED CONC (4 ")	SY	5,583		
61	530	6004	DRIVEWAYS (CONC)	SY	974		
62	531	6001	CONCRETE SIDEWALKS (4")	SY	9,908		
63	531	6004	CURB RAMPS (TY 1)	EA	4		
64	531	6005	CURB RAMPS (TY 2)	EA	4		

UNIT PRICE SCHEDULE: BASE BID

CONTROL: 0924-06-111

PROJECT: STP 95 (322)MM

HIGHWAY: OLD HUECO TANKS ROAD

COUNTY:EL PASO

TYPE : CONSTRUCTION OF NEW FOUR LANE RAISED MEDIAN URBAN COLLECTOR ROADWAY
(Old Hueco Tanks Road)

Key	Item No.	Item Code	Brief Description of Item	Unit	Est. Quantity	Unit Bid Price (In Figures)	Total Amount (Quantity x Unit Price) (In Figures)
65	531	6016	CURB RAMPS (TY 21)	EA	3		
66	550	6004	GATE (INSTALL) (DOUBLE) (6" X 14')	EA	2		
67	610	6052	IN RD IL AM (TY SA)(40T-10)(250W) S	EA	82		
68	618	6023	CONDT (PVC) (SCHD 40) (2")	LF	13,552		
69	618	6029	CONDT (PVC) (SCHD 40) (3")	LF	629		
70	618	6030	CONDT (PVC) (SCHD 40) (3")(BORE)	LF	378		
71	620	6008	ELEC CONDR (NO. 8) INSULATED	LF	15,279		
72	620	6010	ELEC CONDR (NO. 6) INSULATED	LF	28,544		
73	624	6007	GROUND BOX TY C (162911)	EA	2		
74	624	6008	GROUND BOX TY C (162911) W/APRON	EA	8		

UNIT PRICE SCHEDULE: BASE BID

CONTROL: 0924-06-111

PROJECT: STP 95 (322)MM

HIGHWAY: OLD HUECO TANKS ROAD

COUNTY:EL PASO

TYPE : CONSTRUCTION OF NEW FOUR LANE RAISED MEDIAN URBAN COLLECTOR ROADWAY
 (Old Hueco Tanks Road)

Key	Item No.	Item Code	Brief Description of Item	Unit	Est. Quantity	Unit Bid Price (In Figures)	Total Amount (Quantity x Unit Price) (In Figures)
75	628	6041	ELEC SRV TY A 240/480 060 (NS) SS(E) GC (O)	EA	2		
76	628	6128	ELEC SRV TY D 120/240 060 (NS) GS (N)GC (O)	EA	1		
77	636	6002	ALUMINUM SIGNS (TY G)	SF	330		
78	636	6003	ALUMINUM SIGNS (TY O)	SF	479		
79	644	6001	IN SM RD SN SUP&AM TY 10BWG(1) SA(P)	EA	35		
80	644	6007	IN SM RD SN SUP&AM TY 10BWG(1) SA(U)	EA	2		
81	644	6030	IN SM RD SN SUP&AM TY S80(1) SA (T)	EA	1		
82	644	6076	REMOVE SM RD SN SUP & AM	EA	2		
83	647	6001	INSTALL LRSS (STRUCT STEEL)	LB	674		
84	647	6003	REMOVE LRSA	EA	4		
85	662	6063	WK ZN PAV MRK REMOV (W)4"(SLD)	LF	780		
86	666	6015	REFL PAV MRK TY I (W) 6" (BRK) 100 MIL	LF	3,600		
87	666	6024	REFL PAV MRK TY I (W) 6" (SLD) 100 MIL	LF	13,824		
88	666	6030	REFL PAV MRK TY I (W) 8" (DOT) 100 MIL	LF	186		

UNIT PRICE SCHEDULE: BASE BID

CONTROL: 0924-06-111

PROJECT: STP 95 (322)MM

HIGHWAY: OLD HUECO TANKS ROAD

COUNTY:EL PASO

TYPE : CONSTRUCTION OF NEW FOUR LANE RAISED MEDIAN URBAN COLLECTOR ROADWAY
(Old Hueco Tanks Road)

Key	Item No.	Item Code	Brief Description of Item	Unit	Est. Quantity	Unit Bid Price (In Figures)	Total Amount (Quantity x Unit Price) (In Figures)
89	666	6036	REFL PAV MRK TY I (W) 8" (SLD) 100 MIL	LF	4,491		
90	666	6042	REFL PAV MRK TY I (W) 12" (SLD) (100MIL)	LF	783		
91	666	6048	REFL PAV MRK TY I (W) 24" (SLD)(100ML)	LF	201		
92	666	6054	REFL PAV MRK TY I (W) (ARROW) (100ML)	EA	10		
93	666	6078	REFL PAV MRK TY I (W) (WORD) (100ML)	EA	10		
94	666	6105	REFL PAV MRK TY I (W) (BIKE ARROW) (100ML)	EA	12		
95	666	6111	REFL PAV MRK TY I (W) (BIKE SYML)(100ML)	EA	12		
96	666	6171	REFL PAV MRK TY II (W) 6" (BRK)	LF	3,600		
97	666	6174	REFL PAV MRK TY II (W)6" (SLD)	LF	13,824		
98	666	6176	REFL PAV MRK TY II (W) 8" (DOT)	LF	186		
99	666	6178	REFL PAV MRK TY II (W) 8" (SLD)	LF	4,491		
100	666	6180	REFL PAV MRK TY II (W) 12" (SLD)	LF	783		
101	666	6182	REFL PAV MRK TY II (W) 24" (SLD)	LF	201		

UNIT PRICE SCHEDULE: BASE BID

CONTROL: 0924-06-111

PROJECT: STP 95 (322)MM

HIGHWAY: OLD HUECO TANKS ROAD

COUNTY:EL PASO

TYPE : CONSTRUCTION OF NEW FOUR LANE RAISED MEDIAN URBAN COLLECTOR ROADWAY
(Old Hueco Tanks Road)

Key	Item No.	Item Code	Brief Description of Item	Unit	Est. Quantity	Unit Bid Price (In Figures)	Total Amount (Quantity x Unit Price) (In Figures)
102	666	6184	REFL PAV MRK TY II (W) (ARROW)	EA	10		
103	666	6192	REFL PAV MRK TY II (W) (WORD)	EA	10		
104	666	6200	REFL PAV MRK TY II (W) (BIKE ARROW)	EA	12		
105	666	6202	REFL PAV MRK TY II (W) (BIKE SYMBOL)	EA	12		
106	672	6010	REFL PAV MRKR TY II-C-R	EA	278		
107	677	6001	ELIM EXT PAV MRK & MRKR (4")	LF	285		
108	680	6003	INSTALL HWY TRF SIG (SYSTEM)	EA	1		
109	682	6001	VEH SIG SEC (12 IN) LED (GRN)	EA	7		
110	682	6002	VEH SIG SEC (12 IN) LED (GRN ARW)	EA	5		
111	682	6003	VEH SIG SEC (12 IN) LED (YEL)	EA	7		
112	682	6004	VEH SIG SEC (12 IN) LED (YEL ARW)	EA	3		
113	682	6005	VEH SIG SEC (12 IN) LED (RED)	EA	7		
114	682	6006	VEH SIG SEC (12IN) LED (RED ARW)	EA	2		

UNIT PRICE SCHEDULE: BASE BID

CONTROL: 0924-06-111

PROJECT: STP 95 (322)MM

HIGHWAY: OLD HUECO TANKS ROAD

COUNTY:EL PASO

TYPE : CONSTRUCTION OF NEW FOUR LANE RAISED MEDIAN URBAN COLLECTOR ROADWAY
(Old Hueco Tanks Road)

Key	Item No.	Item Code	Brief Description of Item	Unit	Est. Quantity	Unit Bid Price (In Figures)	Total Amount (Quantity x Unit Price) (In Figures)
115	682	6018	PED SIG SEC (LED) (COUNTDOWN)	EA	6		
116	684	6012	TRF SIG CBL (TY A) (12 AWG) (7 CONDR)	LF	1,583		
117	684	6017	TRF SIG CBL (TY A) (12 AWG) (12 CONDR)	LF	585		
118	684	6054	TRF SIG CBL (TY A) (18 AWG) (3 CONDR)	LF	764		
119	686	6041	INS TRF SIG PL AM(S) 1 ARM (40')	EA	2		
120	686	6057	INS TRF SIG PL AM(S) 1 ARM (55')	EA	1		
121	687	6001	PED POLE ASSEMBLY	EA	6		
122	688	6001	PED DETECT PUSH BUTTON (APS)	EA	6		
123	690	6098	INSTALLSPREAD SPECTRUM ANTENNA	EA	1		
124	760	6001	DITCH CLEANING AND RESHAPING (FOOT)	LF	986		
125	1002	6001	LANDSCAPE AMENITY	EA	24		
126	1005	6001	LOOSE AGGR FOR GROUNDCOVER (TYPE I)	CY	141		
127	1005	6002	LOOSE AGGR FOR GROUNDCOVER (TYPE II)	CY	149		
128	6002	6001	VIVDS PROCESSOR SYSTEM	EA	1		

UNIT PRICE SCHEDULE: BASE BID

CONTROL: 0924-06-111

PROJECT: STP 95 (322)MM

HIGHWAY: OLD HUECO TANKS ROAD

COUNTY:EL PASO

**TYPE : CONSTRUCTION OF NEW FOUR LANE RAISED MEDIAN URBAN COLLECTOR ROADWAY
(Old Hueco Tanks Road)**

Key	Item No.	Item Code	Brief Description of Item	Unit	Est. Quantity	Unit Bid Price (In Figures)	Total Amount (Quantity x Unit Price) (In Figures)
129	6002	6002	VIVDS CAMERA ASSEMBLY	EA	3		
130	6002	6003	VIVDS SETUP SYSTEM	EA	1		
131	6002	6005	VIVDS COMMUNICATION CABLE (COAXIAL)	LF	764		
132	6054	6001	SPREAD SPECTRUM RADIO	EA	1		
133	6054	6002	COAXIAL CABLE	LF	44		
134	6054	6003	HELIAX CABLE	LF	20		

Totals \$:

SIGNED

GRAND TOTAL

TITLE _____
DATE _____

CHK: _____
 DWF: _____
 CJK: _____
 DNE: _____

SUMMARY OF TRAFFIC SIGNAL ITEMS													
LOCATION	416 6032	416 6034	618 6023	618 6029	618 6030	620 6008	620 6010	624 6007	624 6008	628 6128	680 6003	682 6001	682 6002
	DRILL SHAFT (TRF SIG POLE) (36 IN)	DRILL SHAFT (TRF SIG POLE) (48 IN)	CONDT (PVC) (SCH 40) (2")	CONDT (PVC) (SCH 40) (3")	CONDT (PVC) (SCH 40) (3") (BORE)	ELEC CONDR (NO. 8) INSULATED	ELEC CONDR (NO. 6) INSULATED	GROUND BOX TY C (162911)	GROUND BOX TY C (162911) W/ APRON	ELC SRV TY D 120/240 060 (NS) GS (N) GC (O)	INSTALL HWY TRF SIG (SYSTEM)	VEH SIG SEC (12") LED (GRN)	VEH SIG SEC (12") LED (GRN ARW)
	LF	LF	LF	LF	LF	LF	LF	EA	EA	EA	EA	EA	EA
SHEET 1 OF 1	24	20	24	629	378	1031	48	2	4	1	1	7	5
PROJECT TOTALS	24	20	24	629	378	1031	48	2	4	1	1	7	5

SUMMARY OF TRAFFIC SIGNAL ITEMS CONTINUE													
LOCATION	682 6003	682 6004	682 6005	682 6006	684 6012	684 6017	684 6054	686 6041	686 6057	690 6098	6002 6001	6002 6002	6002 6003
	VEH SIG SEC (12") LED (YEL)	VEH SIG SEC (12") LED (YEL ARW)	VEH SIG SEC (12") LED (RED)	VEH SIG SEC (12") LED (RED ARW)	TRF SIG CBL (TY A) (12 AWG) (7 CONDR)	TRF SIG CBL (TY A) (12 AWG) (12 CONDR)	TRF SIG CBL (TY A) (18 AWG) (3 CONDR)	INS TRF SIG PL AM(S) 1 ARM (40')	INS TRF SIG PL AM(S) 1 ARM (55')	INSTALL SPREAD SPECTRUM ANTENNA	VIVDS PROCESSOR SYSTEM	VIVDS CAMERA ASSEMBLY	VIVDS SET-UP SYSTEM
	EA	EA	EA	EA	LF	LF	LF	EA	EA	EA	EA	EA	EA
SHEET 1 OF 1	7	3	7	2	1583	585	764	2	1	1	1	3	1
PROJECT TOTALS	7	3	7	2	1583	585	764	2	1	1	1	3	1

SUMMARY OF TRAFFIC SIGNAL ITEMS CONTINUE				
LOCATION	6002 6005	6054 6001	6054 6002	6054 6003
	VIVDS COMMUNICATION CABLE (COAXIAL)	SPREAD SPECTRUM RADIO	COAXIAL CABLE	HELIAX CABLE
	LF	EA	LF	LF
SHEET 1 OF 1	764	1	44	20
PROJECT TOTALS	764	1	44	20


SUMMARY OF EROSION CONTROL ITEMS							
LOCATION	204 6003	506 6020	506 6024	506 6038	506 6039	506 6040	506 6043
	SPRINKLING (DUST CONTROL)	CONSTRUCTION EXITS (INSTALL) (TY 1)	CONSTRUCTION EXITS (REMOVE)	TEMP SEDMT CONT FENCE (INSTALL)	TEMP SEDMT CONT FENCE (REMOVE)	BIODEG EROSN CONT LOGS (INSTL) (8")	BIODEG EROSN CONT LOGS (REMOVE)
	MG	SY	SY	LF	LF	LF	LF
SHEET 1 OF 3	2	328	328	3547	3547	330	330
SHEET 2 OF 3	2			4932	4932	180	180
SHEET 3 OF 3	2	521	521	5467	5467	334	334
PROJECT TOTALS	6	849	849	13946	13946	844	844

SUMMARY OF ILLUMINATION ITEMS								
LOCATION	416 6029	420 6002	610 6052	618 6023	620 6008	620 6010	624 6008	628 6041
	DRILL SHAFT (RDWY ILL POLE) (30 IN)	CL A CONC (MISC)	IN RD IL AM (TY SA) 40T-10 (250W) S	CONDT (PVC) (SCH 40) (2")	ELEC CONDR (NO. 8) INSULATED	ELEC CONDR (NO. 6) INSULATED	GROUND BOX TY C (162911) W/APRON	ELC SRV TY A 240/480 060 (NS) SS (E) GC (O)
	LF	CY	EA	LF	LF	LF	EA	EA
SHEET 1 OF 3	208	12	26	4482	4722	9444	2	1
SHEET 2 OF 3	232	13	29	4597	4829	9658		
SHEET 3 OF 3	216	12	27	4449	4697	9394	2	1
PROJECT TOTALS	656	37	82	13528	14248	28496	4	2

OLD HUECO TANKS RD.

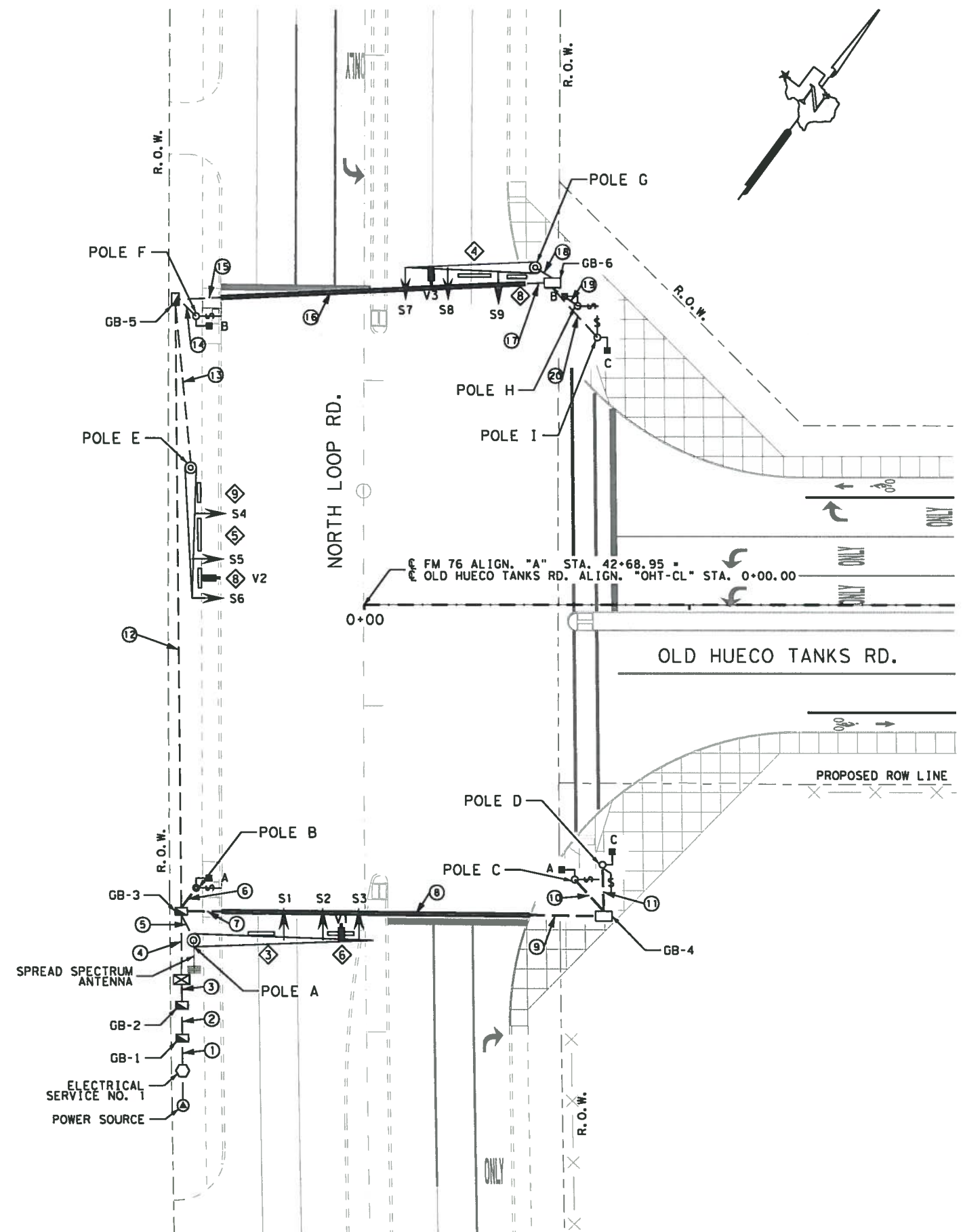
**GENERAL
SUMMARY SHEETS**

SHEET 3 OF 4

			
FED. RD. DIV. NO.	STATE		SHEET NO.
6	TEXAS		13-A3
DIST.	SECTION	COUNTY	HIGHWAY NO.
ELP	06	EL PASO	CS
CONTROL		JOB	
0924		111	

DATE: 8/18/2016 8:29:30 AM
 FILE: m:\0924-06-111 old hueco\3-Plan Sheets\01- General\Summary Sheet.dgn

8/18/2016 8:17:11 AM M:\0924-06-111 Old Hueco\3-Plan Sheets\08-Traffic\01=Signal\SIGNAL=northloop.dgn



- NOTES:**
1. PROVIDE A TS2 SIGNAL CONTROLLER COMPATIBLE WITH NAZTEC STREET WISE SOFTWARE. INSTALL BACK OF CONTROLLER CABINET FACING ROAD.
 2. PROVIDE A SPREAD SPECTRUM RADIO CAPABLE OF VIDEO TRANSMISSION. ORIENT RADIO/ANTENNA TO PROVIDE OPTIMUM SIGNAL STRENGTH.
 3. LABEL ALL CONDUCTORS AT ALL ACCESSIBLE POINTS.
 4. PROVIDE AND INSTALL MAST ARM SIGNS SUBSIDIARY TO ITEM 680-6003, "INSTALL HWY TRF SIG (SYSTEM)".
 5. DETERMINE THE TYPE AND LOCATION OF UNDERGROUND UTILITIES SO AS TO AVOID DAMAGES THERETO. CONTACT UTILITY OWNERS IN ADVANCE OF EXCAVATION ACTIVITIES. MAINTAIN PROPER CLEARANCES FOR ALL OVERHEAD AND UNDERGROUND UTILITIES.
 6. LOCATION OF THE SIGNAL POLES, PEDESTRIAN PUSH BUTTONS AND FIXTURES ARE DIAGRAMMATIC ONLY AND MAY BE SHIFTED AS DIRECTED TO ACCOMMODATE LOCAL CONDITIONS. EXACT LOCATION OF SIGNAL POLES, CONTROLLER, ETC. TO BE APPROVED BY THE FIELD ENGINEER.

LEGEND

⊙	POWER SOURCE
○	ELECTRICAL SERVICE
□	GROUND BOX TY C
▣	GROUND BOX TY C W/APRON
⊠	TRAFFIC SIGNAL CONTROLLER
---	CONDUIT (PVC)
---	CONDUIT BORE
→	MAST ARM (W/ TRAFFIC SIGNAL POLE)
○	PEDESTAL POLE
→	PROP. SIG HEAD
→	PEDESTRIAN SIGNAL HEAD
→	PEDESTRIAN PUSH BUTTON
→	VEHICLE DETECTION CAMERA (VIVDS)
→	SIGNAGE ON MAST ARM OR POLE
→	SPREAD SPECTRUM ANTENNA

ESTIMATED QUANTITIES

ITEM	CODE	DESCRIPTIONS	UNIT	QTY
416	6032	DRILL SHAFT (TRF SIG POLE) (36 IN)	LF	24
416	6034	DRILL SHAFT (TRF SIG POLE) (48 IN)	LF	20
618	6023	CONDT (PVC) (SCH 40) (2")	LF	24
618	6029	CONDT (PVC) (SCH 40) (3")	LF	629
618	6030	CONDT (PVC) (SCH 40) (3") (BORE)	LF	378
620	6008	ELEC CONDR (NO. 8) INSULATED	LF	1031
620	6010	ELEC CONDR (NO. 6) INSULATED	LF	48
624	6007	GROUND BOX TY C (162911)	EA	2
624	6008	GROUND BOX TY C (162911)W/APRON	EA	4
628	6128	ELC SRV TY D 120/240 060 (NS) GS (N) GC (O)	EA	1
680	6003	INSTALL HWY TRF SIG (SYSTEM)	EA	1
682	6001	VEH SIG SEC (12")LED(GRN)	EA	7
682	6002	VEH SIG SEC (12")LED(GRN ARW)	EA	5
682	6003	VEH SIG SEC (12")LED(YEL)	EA	7
682	6004	VEH SIG SEC (12")LED(YEL ARW)	EA	3
682	6005	VEH SIG SEC (12")LED(RED)	EA	7
682	6006	VEH SIG SEC (12")LED(RED ARW)	EA	2
684	6012	TRF SIG CBL (TY A) (12 AWG) (7 CONDR)	LF	1583
684	6017	TRF SIG CBL (TY A) (12 AWG) (12 CONDR)	LF	585
684	6054	TRF SIG CBL (TY A) (18 AWG) (3 CONDR)	LF	764
686	6041	INS TRF SIG PL AM(S)1 ARM(40')	EA	2
686	6057	INS TRF SIG PL AM(S)1 ARM(55')	EA	1
690	6098	INSTALL SPREAD SPECTRUM ANTENNA	EA	1
6002	6001	VIVDS PROCESSOR SYSTEM	EA	1
6002	6002	VIVDS CAMERA ASSEMBLY	EA	3
6002	6003	VIVDS SET-UP SYSTEM	EA	1
6002	6005	VIVDS COMMUNICATION CABLE (COAXIAL)	LF	764
6054	6001	SPREAD SPECTRUM RADIO	EA	1
6054	6002	COAXIAL CABLE	LF	44
6054	6003	HELIAX CABLE	LF	20

ADA ESTIMATED QUANTITIES

ITEM	CODE	DESCRIPTIONS	UNIT	QTY
687	6001	PED POLE ASSEMBLY	EA	6
682	6018	PED SIG SEC (LED) (COUNTDOWN)	EA	6
688	6001	PED DETECT PUSH BUTTON (APS)	EA	6



J. Perez
8-18-2016

**OLD HUECO TANKS RD.
TRAFFIC SIGNAL
TRAFFIC SIGNAL
LAYOUT
AT NORTH LOOP DR.**

SCALE: 1"=40'

SHEET 1 OF 1

Texas Department of Transportation

FED. RD. DIV. NO. 6	SHEET NO. 121-A3
STATE TEXAS	DIST. ELP
CONTROL 0924	SECTION 06
JOB 111	HIGHWAY NO. CS