



AMENDMENT OF SOLICITATION

Vista del Sol Drive Project

The above titled solicitation is amended. **All amendments must be acknowledged on the "PROPOSAL"; failure to do so may be cause for rejection of bid.**

The date specified for receipt of offers is NOT extended:

Bid Date: February 23, 2017 @ 2:00 (MST)

Addendum No. 1

February 20, 2017

Contents:

AGREEMENT AND SPECIFICATIONS VISTA DEL SOL 24-INCH WATER MAIN EXTENSION (PHASE III) & SANITARY SEWER IMPROVEMENTS Volume 1 of 2 Contract Documents January 2017

1. Pages 1 thru 14 of the proposal "AGREEMENT AND SPECIFICATIONS VISTA DEL SOL 24-INCH WATER MAIN EXTENSION (PHASE III) & SANITARY SEWER IMPROVEMENTS Volume 1 of 2 Contract Documents January 2017" are replaced with 1-A1-13-A1 thru 13-A1-13A1. The updated sheets reflect revisions to Page 1-A1 "1. Scope of Work" section Base Bid 2 paragraph 1 & Page 7-A1 "Measurement and Payment" section "C. Base Bid II Items" no. 6 paragraph 1.

VISTA DEL SOL DRAINAGE & STREET IMPROVEMENTS EL PASO COUNTY, TX

2. Page 9 of the proposal "VISTA DEL SOL DRAINAGE & STREET IMPROVEMENTS EL PASO COUNTY, TX" is replaced with 9-A1. The updated sheet reflects "working days" instead of "calendar days" per paragraph 2.
3. Page 20 of the proposal "VISTA DEL SOL DRAINAGE & STREET IMPROVEMENTS EL PASO COUNTY, TX TECHNICAL SPECIFICATIONS" is replaced with 20-A1. Item 2L Instructions to Bidders, 2. Eligibility of Bidders and 3. Issuing Bid documents has been changed.
4. "Unit Price Schedule: Base Bid I" sheets 19 thru 26 is replaced with sheets 19-A1 thru 26-A1. Key numbers 7 and 18 were updated; replaced bid code 132-6006 with 132-6004 and bid code 400-6003 quantity was revised.
5. "Unit Price Schedule: Base Bid II" sheets 27 thru 29 are replaced with sheets 27-A1 thru 29-A1. Revised Item No. 11 quantity; added Item No. 11A. and Item No. 11B. Added "SIGNED, TITLE and DATE" sections to sheet 29-A1.
6. "Unit Price Schedule: Base Bid III" sheets 30 thru 33 are replaced with sheets 30-A1 thru 33-A1. Added "SIGNED, TITLE and DATE" sections to sheet 33-A1.
7. Plan Sheet 3 is replaced with 3-A1. The updated Plan Sheet reflects revised quantity to Item Code 400-6003.
8. Plan Sheet 18 is replaced with 18-A1. The updated Plan Sheet revises text.

9. **Plan Sheets 89 and 91 are replaced with 89-A1 and 91-A1. The updated Plan Sheets reflect revised quantities to bid code 400-6003.**
10. **Plan Sheet 90 is replaced with 90-A1. The updated Plan Sheet reflects the addition of bid code 400-6003.**

ISSUED BY:

Camino Real Regional Mobility Authority
General Engineering Consultant

SPECIAL CONDITIONS

1. SCOPE OF WORK

The Contractor may begin work immediately after receipt of the Camino Real Regional Mobility Authority (RMA) / El Paso County written Notice to Proceed. The work of the Contractor shall be fully coordinated with that of El Paso Water Utilities (EPWU) personnel.

The work shall include the following:

Base Bid 2:

The Water Transmission Improvements consist of the installation of approximately 3,800 lineal feet of 24-inch approved potable water pipe; approximately 540 lineal feet of 16-inch approved water pipe; approximately 400 lineal feet of 12-inch approved water pipe; approximately 80 lineal feet of 8-inch approved water pipe; approximately 2-Blow-Off Valves with manholes; approximately 6-Butterfly Valves with manholes; approximately 3-Combination Air Release/Vacuum Valves with manholes; approximately 2-12-inch Gate Valves; 1 – 12-inch Gate Valve and Tapping Sleeve Assembly; 1 – 8-inch Gate Valve; approximately 300 lineal feet of 32-inch HDPE casing installed by open-cut methods; corrosion Protection System for the pipeline; trench safety system for the pipeline; pavement removal and replacement, SWPPP, videotaping of project site before and after construction; and a traffic control plan/operation.

Base Bid 3:

Approximately 540 lineal feet of 15-inch diameter sanitary sewer approved pipe; approximately 2,700 lineal feet of 12-inch diameter sanitary sewer approved pipe; approximately 1,410 lineal feet of 8-inch diameter sanitary sewer approved pipe; approximately 10-48-inch diameter pre-cast manholes; approximately 4-72-inch diameter pre-cast manholes; approximately 4-6-inch commercial sewer service connections; approximately 40 lineal feet of 16-inch and 24-inch steel casing installed by open-cut methods; pavement removal and replacement; landscaping improvements, trench safety system for the pipeline installation, SWPPP, videotaping of project site before and after construction; and a traffic control plan/operation.

The Contractor shall satisfy himself before commencing work as to the meaning or correctness of all horizontal control points and benchmarks, and no claim of inaccuracy will be considered, unless the Contractor notified the Engineer thereof in writing before commencing the work. The Contractor will be held responsible for preservation of all control points and benchmarks in their positions. In case any of them are lost or destroyed, all expense incurred by the Owner in replacing them shall be charged against the Contractor and paid for by him before the completion and final acceptance of the work.

Milestone 1 for Sanitary Sewer Facilities

The work reflected in Plan Sheets C4.4 through C4.7, shall be substantially complete within 90 Calendar Days from the date when Contract commences to run. Any failure of the Contractor to complete the work within this time, shall be considered a material breach of Contract and Contractor shall pay El Paso Water Liquidated Damages. Owner and/or El Paso Water and Contractor recognize that time is of the essence and that El Paso Water will suffer financial loss and public inconvenience if the Work is not completed. Contractor also recognizes the delays, expense and difficulties involved in proving in a legal proceeding the actual loss suffered by the El Paso Water if the work is not completed in time. Accordingly, instead of requiring any such proof, Owner and/or El Paso Water and Contractor agree that as liquidated damages for delay (but not as a penalty) Contractor shall pay El Paso Water \$1,750.00 per day. Liquidated Damages shall be computed from the milestone date until the date the milestone task is completed.

2. CONTRACTOR'S RESPONSIBILITY FOR INSTALLATION OF THE WATER SYSTEM

It is the intent of these specifications that the installation of the water transmission mains be a complete workable system, functioning in accordance with the specified purpose. Therefore, it is the direct responsibility of the Contractor to furnish, install, and construct a complete system required by the plans for the prices stated in the Contract, and to take account of all subsidiary requirements of the materials and other items furnished to the end that the water and sewer mains function in accordance with the specified

requirements.

3. DRAWINGS

The work is shown on a set of drawings entitled "Vista del Sol 24-inch Water Main Extension (Phase III) & Sanitary Sewer Improvements" and such detail drawings as may be included in the bound specifications.

The Contractor shall check all dimensions and quantities on the drawing furnished by the Owner or by himself and shall notify the Engineer of all errors or omissions which he may discover by examining and checking the same. He will not be allowed to take advantage of any error or omission in the drawings, as full instructions will be furnished by the Engineer, should such error or omission be discovered, and the Contractor shall carry out such instructions as if originally specified.

4. TEMPORARY PAVING

Temporary patch paving required as result of water line installation shall be as per RMA/El Paso County specifications. Cost associated with temporary patch paving will be at the Contractor's expense.

5. COORDINATION OF EXISTING FACILITY OPERATIONS

Personnel from the EPWU will assist in working out the coordination between the construction operations and the operation of the existing facilities, but it is the Contractor's responsibility to clear all his operations which might interfere with such existing operations with the Project Manager.

6. WATER AND SANITARY SEWER BYPASSING

A. DESCRIPTION:

1. **SCOPE OF WORK:** This section specifies the requirements for temporary bypassing, flushing, and abandonment of water and sanitary sewer lines. The Contractor shall keep excavations reasonably free from water during construction. The Contractor shall control surface run-off to prevent entry or collection of water in excavations.
2. **REQUIREMENTS:** Contractor shall provide labor, materials, and supervision to temporarily bypass flow around the Contractor's work during water facility construction where necessary. Contractor shall flush all sanitary sewers and manholes to be abandoned with a minimum of twice the sanitary sewer's volumes of water. Contractor shall dewater all sanitary sewers and water lines to be abandoned. Sanitary sewer lines to be abandoned shall be cut and plugged at all open ends. Water lines shall be isolated, valves closed and depressurized prior to abandonment. All work to be closely coordinated with the Engineer.
3. **SUBMITTALS:** Within 14 calendar days of notice to proceed, the Contractor shall submit to the Engineer, for review and approval, drawings and complete design data showing methods and equipment he proposes to utilize in water and sanitary sewer bypassing. The submittal shall include the following information:
 - a) Drawings indicating the location of temporary water and sanitary sewer plugs and bypass discharge lines
 - b) Capacities of pumps, prime movers, and stand-by equipment
 - c) Design calculations proving adequacy of the system and selected equipment
4. **JOB CONDITIONS:**
 - a) Available Data: Flow data are available for review at the Owner's office. Use of this information in no way relieves the Contractor from his responsibility for design, construction, and operation of an adequate and properly functioning bypass. Any additional testing or gathering of flow data is the responsibility of

the Contractor.

- b) Protection: Where bypassing is required, the Contractor shall ensure that service for connecting sanitary sewer laterals and water services is not disrupted. All flow shall be discharged into the nearest downstream manhole. Bypassing shall not surcharge sanitary sewers or interfere with normal operation of related sanitary sewer facilities. No discharging to the ground surface, receiving streams, storm drains, or discharging which results in groundwater contamination or potential health hazards shall be permitted. In the event accidental discharging is caused by the Contractor's operations, the Owner shall immediately be entitled to employ others to stop the discharging without giving written notice to the Contractor. All water bypassing shall conform to AWWA procedures for prevention of contamination for water lines, backflow provisions, and provisions for conduit protection and support.
- c) Scheduling: The bypassing systems shall not be shut down between shifts, on holidays or weekends, or during work stoppages without written permission from the EPWU and/or Engineer.

The Contractor shall submit a detailed outage plan and time schedule for operations that will make it necessary to remove a tank, pipeline, channel, electrical circuit, equipment or structure from service. The schedule shall be coordinated with the EPWU and/or Engineer and shall meet the restrictions and conditions specified in this section. The detailed plan shall describe the Contractor's method for preventing accidental discharges, the length of time required to complete said operation, the necessary plan, and equipment which the Contractor shall provide in order to prevent accidental discharges.

The Contractor shall observe the following restrictions:

Systems or individual equipment items shall be isolated, de-commissioned, de-energized, or de-pressurized in accordance with the detailed outage plan and schedule. The EPWU and/or Engineer shall be notified in writing at least one week in advance of the planned operation.

B. EXECUTION:

1. WATER AND SANITARY SEWER BYPASSING:

General: Water and Sanitary sewer bypassing shall be accomplished by pumping or diverting the upstream flow around the Contractor's work or as directed by the EPWU and/or Engineer.

The Contractor shall provide temporary pumps, conduits, and other equipment to bypass the water or sanitary sewer flow. Contractor shall furnish the necessary labor and supervision to set up and operate the pumping and bypass system. Engines shall be equipped with mufflers and/or enclosed to keep the noise level within local ordinance requirements. Pumps and bypass lines shall be of adequate capacity and size to handle the flows. All bypassed flow shall be discharged to the nearest downstream manhole.

Unless otherwise specified, the Contractor shall bypass flow around his work whenever the depth of flow, as measured at the inlet pipe to the upstream manhole adjacent to the Contractor's work, exceeds the crown elevation of the pipe; or whenever the Contractor's equipment operating in the sanitary sewer provides an obstruction that restricts flow and causes the depth of flow to exceed the crown elevation.

2. **STANDBY EQUIPMENT:** The Contractor shall maintain on site sufficient equipment and materials to ensure continuous and successful operation of the bypass and dewatering systems. Standby pumps shall be fueled and operational at all times. The Contractor shall maintain on site a sufficient number of valves, tees, elbows, connections, tools, sanitary sewer plugs, piping and other parts or system hardware to ensure immediate repair or modification of any part of the system as necessary.
3. **DAMAGES:** The Contractor shall repair without cost to the Owner any damage that may result from his negligence, inadequate or improper installation, maintenance and operation of bypassing and a dewatering system including mechanical or electrical failures.
4. **MEASUREMENT AND PAYMENT:** Payment for the work in this section will be subsidiary to the unit prices for installing pipe, manholes, valves, fire hydrants, service connections or fittings complete in place.

7. PERMITS

Before commencing operations, the Contractor will secure and pay all permits required in the prosecution of this Contract.

8. INSPECTION OF INSTALLATION AND CONSTRUCTION

The Contractor shall at all times maintain proper facilities and provide safe access to all parts of the work for purposes of inspection by the Engineer. Should any work be covered up before approval or consent of the Engineer, it must, if required by the Engineer, be uncovered for examination at the Contractor's expense.

The Contractor shall accord the same notification and access to repair work as to the work originally constructed, and the same conditions regarding acceptance shall apply.

It shall be the Contractor's responsibility to schedule, coordinate, and request any inspection required upon completion of work.

All testing and inspection of installation and construction of water and sanitary sewer systems shall be performed in accordance to the "Standard Specifications for the Installation of Water Mains, Sanitary Sewer Mains, and Related Appurtenances" included in these Specifications.

9. REMOVED MATERIALS

Salvageable equipment, metal piping, appurtenances and other components removed during the course of the work, including fire hydrants, bonnet boxes, meter valves, and boxes shall be free of chemicals, oils, liquids, concrete, and plastic and shall be returned and delivered by the Contractor to a designated EPWU's warehouse within 20 miles of project site. However, if the Contractor removes any section of pipe that is scheduled to be abandoned, then it will become the responsibility of the Contractor to properly dispose of all piping at his expense.

10. WATER FOR CONSTRUCTION

Water for all construction purposes will be provided at the Contractor's expense for trenching, water and sanitary sewer installation, filling, testing, disinfecting and flushing existing and proposed installations, and all storm drain, landscape, roadway construction, dust control, compaction, and clean-up. At no time will un-metered water consumption be allowed, nor will the Contractor be allowed to operate a fire hydrant. Construction water can be provided upon approval and meter deposits and fees to the Utility have been paid on an existing fire hydrant. The fire hydrant meter fee is \$2,125.00, which includes a meter and backflow preventor fee of \$2,000.00 and a set-up and removal fee of \$125.00 for the installation and removal of the meter. The fire hydrant meter will not be removed from the assigned fire hydrant by anyone other than Utility Personnel. An outlet valve will be provided with the fire hydrant meter for Contractor's use. A water loss fee of \$500.00 will be assessed to the Contractor for each occurrence that violates the above. Charges due will be deducted from the deposited amount. Charges in excess of the deposit amount must be paid before

the project will be accepted into the Utilities' system. Any excess deposit will be refunded promptly.

Construction water drawn through fire hydrant meters will be charged to the Contractor at a usage rate of \$3.98 per hundred cubic feet. Fire hydrant meters will be installed and removed by EPWU's personnel only. Fire hydrant meters have a locking device and a built-in backflow preventor. The Contractor is no longer responsible for providing his own backflow preventor for fire hydrant meters. Water used to fill, pressure test, and disinfect water main lines will be billed at the standard construction water rate of \$3.98 per hundred cubic feet and will be calculated at one and a half times the volume of the installed pipe.

The Contractor may, with the approval of the Engineer, make other arrangements and secure water for construction purposes from a source of his own choosing, including but not limited to Reclaimed Water from the Wastewater Treatment Plants, which is available at a reasonable cost. The Contractor shall obtain information, terms and conditions of service, application process, and other requirements from the EPWU's Developer Services Section. Issuance of a construction meter or stand-pipe requires a deposit. Standard forms are available at the EPWU's Developer Services Section. The Contractor shall provide such facilities as may be required for transporting and utilizing this water at his own cost.

Upon completion of the project, the Contractor must call the Engineering Developer Services Section at 594-5545 or 594-5635 to have the meter removed. Upon meter removal, the Contractor will be assessed for the water consumed plus any damages to the fire hydrant and/or fire hydrant meter assembly.

11. NOTIFICATION OF PROPERTY OWNER

The Contractor shall be responsible for the notification of property owners, businesses and residents along the pipeline route to explain the construction to them. The Contractor shall be responsible for providing access to the businesses and residences for all property owners, customers and residents.

Notification of all businesses, residents, and property owners shall be by printed handout approved by the Owner. The Contractor shall furnish proof to the Owner that each resident along the route has been notified.

Any resident unable to park their vehicle at their residence due to the construction shall be provided with a place to park as near to the residence as possible. The Contractor shall provide security for such vehicle.

12. EXISTING UTILITIES AND FACILITIES

The Contractor shall be fully responsible for all underground facilities which are shown on the drawings or which can be located by the Contractor with reasonable effort, or which are brought to the attention of the Contractor in any manner. The Contractor shall be responsible for notifying the Engineer if any unknown facilities are uncovered and for protecting those facilities after they are uncovered.

The drawings only indicate the approximate location of existing utilities that could be located or approximated during design. Therefore, the Contractor shall be responsible for determining the exact location of all buried utilities along the pipeline routes prior to starting any excavation activities. The Contractor shall be responsible for locating and protecting all utilities and service connections along the route of construction. Prior to submittal of shop drawings and the ordering of pipeline materials, the Contractor will be required to pot-hole and locate (vertical and horizontal) all existing utilities within the right-of-way and to determine adjustments to the proposed pipeline alignment of the water and sewer facilities. Adjustments to the proposed water and sewer alignments shall be as approved by the Engineer and EPWU.

The Contractor shall be responsible for the protection of all electric power poles, overhead lines, light poles, etc. which occur along the various pipeline routes. The Contractor shall provide whatever temporary shoring is necessary to ensure that all poles are adequately supported, braced, etc. so that the pole does not sink, shift, tilt, or otherwise move from its original position. Any removal of guy wires or anchors and setting of any guy wires or anchors shall be done at the Contractor's expense. Any measures the Contractor takes to support any type of pole shall be based upon approval of the Engineer and the owner of the pole. The owner of the pole and the Engineer shall be notified of probable work on the pole no later than within the first week of Contractor's work, and again 5 business days prior to the work being done. Removal of temporary supports of guy wires shall be with the approval of the owner of the pole and the Engineer.

Said removals of temporary facilities shall only be started after 5 business days notification and approval from the owner of the pole and the Engineer.

The Contractor shall coordinate the work with all utility companies having facilities within the area of work. Any work associated with the protection, relocation, or by-passing of existing utility lines shall be reflected in the Contractor's project schedule so that the work may be completed without delay to the project. All the requirements of the Contract Documents will apply to any subcontractor who performs any relocation, by-passing, or protection of existing utility lines. All work associated with the relocating, by-passing, or protection of existing utility lines shall be at the expense of the Contractor. Five days prior to the commencement of any protection, relocation, or by-pass work the Contractor shall submit a work plan to the utility line owner and the Engineer for approval. No relocation or by-pass work shall be performed without prior written approval of the work by the owner of the utility line and the Engineer. Emergency protection of existing utility lines to protect the line from immediate damage may be performed by the Contractor without prior approval; however, the Contractor shall take every action to notify the owner and the Engineer of the situation as quickly as possible.

13. DAMAGE TO PRIVATE PROPERTY

The Contractor shall be responsible for any damage to private property caused by the construction project. The Contractor upon receipt of a complaint of damage, shall, within 10 days, respond in writing with a proposal to repair said damage or a letter stating reason why the damage was not caused by the construction.

Except for extenuating circumstances beyond the control of the Contractor the damage shall be repaired completely within 10 days of the complaint.

The Contractor shall not enter or occupy private land outside of acquired rights-of-way or construction easements, except by written permission of the Owner of the private property. Copies of such written permission shall be provided to the Project Manager.

14. WATER AND SANITARY SEWER CONTRACTOR'S MINIMUM QUALIFICATIONS CRITERIA

- A. This Project includes a traffic/pedestrian congested area at the tie-in locations. Included in the installation is the requirement for the Contractor to develop and coordinate traffic control with El Paso County. Bidder must demonstrate he has successfully completed two (2) project with similar complexity, employing traffic control plans within the last five (5) years. Experienced subcontractor is acceptable.
- B. This Project involves the installation of a 24-inch water pipe. Included in this installation is the requirement for the Contractor to coordinate with El Paso Water Utilities and RMA/El Paso County. Bidder must demonstrate successful completion of at least two (2) projects with similar complexity and depth within an existing development within the past five (5) years. One of the projects must show the installation of at least 2,000-feet of 24-inch or larger diameter water pipe of the same material proposed for this project.
- C. This Project involves the installation of gravity sewer pipe in various sizes ranging from 8–15 -inch. Included in this installation is the requirement for the Contractor to coordinate with El Paso Water Utilities and RMA/El Paso County. Bidder must demonstrate successful completion of at least two (2) projects with similar complexity and depth within an existing development within the past five (5) years. One of the projects must show the installation of at least 2,000-feet of 8-inch or larger diameter water pipe of the same material proposed for this project.
- D. The Key Personnel required for this Project are a Project Manager, a Full Time Superintendent, Full Time Foreman, a Project Scheduler, and Owners or Principals of the Bidder to be assigned to this project for the duration by the Contractor to assure completely functional and timely completion of the project. The Project Manager, Full Time Superintendent and Full Time Foreman shall have performed five years of experience in similar construction projects (new development). EPWU reserves the right to review, approve or reject the persons listed as key personnel. Resumes of Key Personnel must be submitted with the bid and accepted by the EPWU in order for the Bidder to

receive the Award.

15. MEASUREMENT AND PAYMENT

- A. BID FORM - The Bid Form is a part of these Contract Documents and lists each item of work for which payment will be made. No payment will be made for items other than those listed in the Bid Form.

Required items of work and incidentals necessary for the satisfactory completion of the Project which are not specifically listed in the Bid Form, and which are not specified in this Section to be measured or to be included in one of the items listed in the Bid shall be considered as incidental to the work required under this Contract, and all costs thereof, including Contractor's overhead costs and profit, shall be considered as included in the prices bid for the various Bid Items. The Contractor shall prepare his bid accordingly.

Work includes furnishing all plant, labor, equipment, tools, and materials, and performing all operations required to complete the work satisfactorily, in place, as specified and as indicated on the Drawings.

- B. MEASUREMENT AND PAYMENT - Measurement of an item of work will be by the unit indicated in the Bid Form.

Measurement will include all necessary and incidental related work not specified to be included in any other item of work listed in the Bid Form.

Unless otherwise stated in individual sections of the specifications or in the Bid Form no separate payment will be made for any item of work, materials, parts, equipment, supplies, or related items required to perform and complete the requirements of any section. The costs for all such items required shall be included in the Contract price bid for item of which it is a part.

Payment will be made at the Contract price per unit indicated in the Bid Form with total prices of the Contract being equal to the Total Bid, as specified and as modified, by extending unit prices multiplied by quantities, as appropriate to reflect actual work included in the Project. Such price and payment shall constitute full compensation to the Contractor for furnishing all plant, labor, equipment, tools, and materials, and for performing all operations required to furnish to the Owner the entire Project, complete in place, as specified and as indicated on the Drawings.

Measurement for payment does not signify acceptance of Work.

Quantities shown in the Bid Form are approximate quantities only. Payment will be made only for measured quantities actually installed and accepted by Owner.

Measurements, such as linear feet, will be to the nearest whole unit.

The Unit Prices for Base Bid II & III will be considered in determining the low responsive/responsible bid and for changing quantities of work items indicated by the Contract Drawings upon written instructions from EPWU through the RMA/El Paso County.

- C. BASE BID II ITEMS

1. Mobilization, Demobilization, Insurance & Bonds (Bid Item # 1): Shall include costs for Contractor's mobilization and demobilization, including bonds, insurance, construction permits and fees, construction water, sanitary and power needs, contract closeout and site cleanup. The mobilization allowance is limited to five (5) percent of the total price for Base Bid No. II.

This item will be measured for payment by lump sum.

2. 8-Inch, 12-Inch, 16-Inch & 24-Inch (Blue) Approved Pipe (Bid Item # 2, 3, 4, 5): Work under this item shall include all costs associated with the cutting, draining, and capping of existing water lines; connection of new water line to existing water lines; abandonment of valves; coordination; excavation, to include rock removal and additional excavation and labor for vertical and/or horizontal adjustment of the main to clear existing utility lines and/or other structures; potholing; temporary by-passing; temporary valves and fittings; gate valves with bonnet boxes; concrete thrust blocks; tapping sleeves; cement stabilized backfill; backfilling and embedment; compaction and compaction testing for utilities; removal and disposal of existing utility lines when in conflict with new water mains (including AC pipe removal and disposal work); bonnet boxes, bonnet box covers, etc.; cutting and plugging of existing lines when not in conflict; abandonment of valves; additional removal and replacement of asphaltic pavement structure; restoration of concrete sidewalk and curb and gutter; all pipe and accessories; fittings; transitional fittings; mechanical joint restraints at all bends; bell protection system at each joint for over-insertion; disinfection; testing; dewatering and disposal of water where required; and all appurtenances defined herein to include, but not limited to the following items: marking tape, polyethylene wrap, traffic control systems, dewatering, temporary cold patch over proposed water mains where required by City, and all other items of the project not indicated as being covered under the other specific bid items shown on the proposal. All AC water pipe work shall be performed by State licensed/certified personnel. When in conflict with new line alignment, existing water and sewer line shall be removed. Such payment shall be complete compensation for the complete performance of the work in accordance with the drawings and the provisions of these specifications.

This item will be measured for payment by the linear foot.

3. 32-Inch HDPE Casing by Open-Cut Method (Bid Item # 6): Work under this item shall include all costs associated with furnishing labor, new materials, excavation, equipment, and incidentals to furnish and install steel casing including spacers and end-rubber seals, as indicated on the Drawings in accordance with EPWU requirements and according to typical steel casing installation.

This item will be measured for payment by the linear foot.

4. 16-Inch & 24-Inch Blow-off Valve Assembly (Bid Item # 7 & 8): Work under this item shall include all costs associated with furnishing labor, materials, equipment, additional removal and replacement of asphaltic pavement structure; restoration of concrete sidewalk and curb and gutter; and incidentals to install Blow-Off Valves, manholes and associated appurtenances. Manholes of standard precast or cast-in-place bases shall be measured for each type installed to a depth as shown in plans for 48-inch and/or 72-inch diameter manholes, including bases, pipe penetrations, grout, concrete, sealant, protective coatings, frames, covers, concrete collars, testing and other appurtenances as shown on the drawings and in accordance with EPWU requirements. The additional depth of manhole risers shall be included in this item and will not be paid separate.

This item will be measured for payment per each.

5. 16-Inch and 24-Inch Butterfly Valve Assembly (Bid Item # 9 & 10): Work under this item shall include all costs associated with furnishing labor, materials, equipment, additional removal and replacement of asphaltic pavement structure; restoration of concrete sidewalk and curb and gutter; and incidentals to install Butterfly Valves, manholes and associated appurtenances. Manholes of standard precast or cast-in-place bases shall be measured for each type installed to a depth as shown in plans for 48-inch and/or 72-inch diameter manholes, including bases, pipe penetrations, grout, concrete, sealant, protective coatings, frames, covers, concrete collars, testing and other appurtenances as shown on the drawings and in accordance with EPWU requirements. The additional depth of manhole risers shall be included in this item and will not be paid separate.

This item will be measured for payment per each.

6. 8-inch and 12-Inch Gate Valves and Tapping Sleeve Assembly (Bid Item # 11, 11A and 11B): Gate valves and tapping sleeve assemblies of the various types and sizes, shall be paid for at the unit price per item installed/constructed (each) and the number of valves and assemblies actually installed. Work under this item shall include all costs associated with furnishing labor, materials, equipment, including valve, valve stem, bonnet box and cover, tapping assembly, concrete, rebar, plastic cover, pot holing, protection and repair of existing utilities, additional removal and replacement of asphaltic pavement structure; restoration of concrete sidewalk and curb and gutter; and incidentals to install gate valves and valve appurtenances as shown on the drawings as they pertain to the particular valve and size of valve and tapping sleeve installed.

This item will be measured for payment per each.

7. 3-inch, 4-inch and 6-inch Combination Air Release/Vacuum Valve Assembly (Bid Item # 12, 13 & 14): Work under this item shall include all costs associated with furnishing labor, materials, equipment, additional removal and replacement of asphaltic pavement structure; restoration of concrete sidewalk and curb and gutter; and incidentals to install combination air release/vacuum valves, manholes and associated appurtenances. Manholes of standard precast or cast-in-place bases shall be measured for each type installed to a depth as shown in plans for 48-inch and/or 72-inch diameter manholes, including bases, pipe penetrations, grout, concrete, sealant, protective coatings, frames, covers, concrete collars, testing and other appurtenances as shown on the drawings and in accordance with EPWU requirements. The additional depth of manhole risers shall be included in this item and will not be paid separate.

This item will be measured for payment per each.

8. Corrosion Protection System and Monitoring Test Stations (Bid Item # 15): Work under this item shall include furnishing all labor, material, concrete work, equipment, tools, superintendence and incidentals required for installing corrosion monitoring test stations

This item will be measured for payment per lump sum.

9. Additional Fittings (Bid Item # 16): Additional fittings will be paid for at a unit price per pound (lb). The work performed and the materials furnished in accordance with this Item and measured as provided under "Measurement" will be paid for at the unit price bid for "Additional Fittings". This price shall be full compensation for furnishing all required materials, including all costs associated with coordination; excavation; backfill, compaction, compaction testing for utilities; disposal of excess material; equipment and materials required for cutting and removal of water mains, furnishing and installing additional valves, bends, tees, crosses, couplings, reducers, adaptors, flexible fittings, not originally shown on the Contract Drawings or drawing details, as deemed necessary by the Engineer and approved by the Owner, complete in place, including but not limited to: thrust blocking, mechanical joint restrainers, concrete anchoring, polyethylene wrapping, and provisions for corrosion protection. Additional fittings are based on the cost of material only. Mechanical joint restrainers in lieu of or in conjunction with concrete thrust blocking shall not be considered for individual payment through the "Additional Fittings" provisions. The actual amount of additional fittings may be less than, but shall not exceed the total quantities allocated on the bid proposal without approval by EPWU or Engineer.

This item will be measured for payment by the pound.

10. Trench Safety System for Water Line Installation (Bid Item # 17): Payment of all work prescribed under this item shall be full compensation for the trench safety system including any design, testing, monitoring, inspection, or additional excavation and backfill required, for furnishing, placing, maintaining and removing all shoring, sheeting, or bracing; for

required compaction; and for all labor, materials, tools, equipment, and any incidentals necessary to complete the "Trench Safety System" work.

This item will be measured for payment by the linear foot.

11. Traffic Control (Bid Item # 18): Payment shall be full compensation for the traffic control required outside of the Vista del Sol Street Improvement project area, including but not limited to permits, plans, coordination, barrels, concrete barricades, water barricades, traffic cones, caution signs, warning signs, construction signs, barrels with flashing lights, speed bumps, flag man, message boards, sand bags, impact attenuators, and any other item required to have a complete and operational traffic control system and any other jurisdictional R.O.W. requirements. Traffic control shall be developed and maintained in accordance with the standards set forth and identified in the roadway construction plans and specifications.

This item will be measured for payment by the lump sum.

12. Storm Water Pollution Prevention (Bid Item # 19): Payment shall be full compensation for the SW3P required outside of the Vista del Sol Street Improvement project area, including but not limited to the design, installation, and management in accordance with TCEQ and El Paso County requirements. Payment shall also include all maintenance, necessary adjustment to reflect work performed, and labor, tools, equipment, permit fees, and any incidentals necessary for completing the work.

This item will be measured for payment by the lump sum.

13. Video Tape of Pipeline Route (Bid Item # 20): Work under this item shall include the video taping of the project area before and after the installation of the Pipeline Improvements.

This item will be measured for payment by the lump sum.

D. BASE BID III ITEMS

1. Mobilization, Demobilization, Insurance & Bonds (Bid Item # 1): Shall include costs for Contractor's mobilization and demobilization, including bonds, insurance, construction permits and fees, construction water, sanitary and power needs, contract closeout and site cleanup. The mobilization allowance is limited to five (5) percent of the total price for Base Bid No. III.

This item will be measured for payment by lump sum.

2. 8-Inch & 12-Inch and 15-Inch Diameter Approved Pipe (Green) (Bid Item # 2, 3, 4, 5 & 6): Construction and easement staking, construction facilities, submittals, coordination, quality control site preparation, barricades, excavation, hand excavation, testing, backfilling and successful passing of compaction test for utilities, protection and relocations of adjacent utilities and structures, relocation, removal and replacement and protection of power and/or light poles, filter fabric for trench bedding, furnishing and installation of stub-outs and plugs, temporary water and sewer bypasses, coring existing manholes, removal and replacement or repair of rock walls and fences, repair of driveways, removal and reinstallation of mailboxes, providing uninterrupted mail access, protection and reconstruction of irrigation ditches (concrete lined or otherwise) and culverts, and operation, providing temporary irrigation bypass systems, all pipe bedding material, repair/replacement of curb and gutter, header curb, repair/replacement of sidewalks, all pipe and accessories, concrete, equipment, mechanical and electrical, access outlets, fittings and blind flanges shown and called out on the Drawings, blind flanges or dished heads and appurtenances for pressure testing, field closures, concrete encasements, concrete thrust blocks, all mechanically restrained joints or welded joints, flexible

connections, couplings, tie-ins and connections to existing lines or work including the lowering or raising of existing lines to grades of new line if necessary for proper connection and cover, removal and replacement of shrubbery, miscellaneous concrete and reinforcement, brick, stone, miscellaneous painting, temporary cold mix patch where required, restoring natural drainage, protection, hanging, relocation of existing utilities, repairing and replacing broken or interfering utility mains damaged during construction, salvage operations, revegetation of easements or construction limits, flushing and all other items of the project not indicated as being covered under the other specific bid items shown in the Proposal. Such payment shall be complete compensation for the complete performance of the work in accordance with the drawings and the provisions of these specifications for a functioning system.

This item will be measured for payment by the linear foot.

3. 16-Inch & 24-Inch Steel Casing by Open-Cut Method (Bid Item # 7 & 8): Work under this item shall include all costs associated with furnishing labor, new materials, excavation, equipment, and incidentals to furnish and install steel casing including spacers and end-rubber seals, as indicated on the Drawings in accordance with EPWU requirements and according to typical steel casing installation.

This item will be measured for payment by the linear foot.

4. 48-Inch and 72-Inch Diameter Manholes (Bid # 9, 10, 11, 12 & 13): Manholes of the various diameters and types (standard and drop) shall be measured for each type installed to a depth of 6 feet for 48-inch diameter manholes and 6 feet for 72-inch diameter manholes, including bases, pipe penetrations, grout, concrete, sealant, protective coatings, frames, covers, concrete collars, testing and other appurtenances as shown on the drawings. The additional depth of manhole risers shall be measured by the vertical foot as determined by measuring the total depth of a manhole from its base to the top of its frame and subtracting 6 feet from the total measured depth.

Payment for manholes shall be at the unit price bid for each manhole installed and accepted. The additional depth of the manhole riser measured shall be at the unit price bid for each vertical foot installed and accepted.

5. 6-Inch Sanitary Sewer Service Connections (Bid Item # 14): Payment for service connections, service taps and related appurtenances shall be made at the unit price bid as stated in the Proposal and will be compensation in full for furnishing and installing the necessary materials and work as follows: Excavation, backfill, service tee to main, riser pipe (of different material where needed) as required, fittings as required, service lateral from riser to within 2 feet of the property line, slope leveling, horizontal and vertical location, As-Built records, plugs and/or caps, rebar stakes, metallic marking tape, coordination with home owner, temporary access, concrete sidewalk, header curb, curb and gutter restorations, shoulder repair/restoration, pavement and base course removal and restoration, and any other work or appurtenance as required for the successful installation as indicated on the Drawings and specified in these Specifications.

Measurement shall be for each service connection, tee and/or tap, furnished and completely installed and accepted by the Engineer.

6. Asphalt Pavement Replacement including 2-Sack (Bid Item # 15): : Work under this item shall include furnishing all labor, material, equipment and performing all operations required to install flowable fill (2-sac)/or base course, and asphalt pavement. This item will be measured for payment on a square yard basis where the centerline of the pipeline is located within the pavement. Paving and base course is to be removed and replaced per the Drawings and these Specifications and will be paid to the limits described therein. No extra payment for excess pavement cut and/or replacement as called for on the plans shall be made without prior written approval by the Engineer. Payment will be made at the unit

price bid and will be compensation in full for all removals and for furnishing and placing all material, labor, compaction, equipment, and incidentals necessary to complete the work in accordance with the Plans and the Standard Specifications. Pavement replacement costs shall include saw cutting, 2-sac cement stabilizer/ or base course, subgrade rework, removal and disposal of waste, re-striping and testing. Pavements damaged as a result of Contractor operations or as a result of the movement of Contractor equipment or vehicles shall be replaced to pre-existing conditions at Contractor's expense.

This item will be measured for payment per square yard.

7. Trench Safety System for Sanitary Sewer Line Installation (Bid Item # 16): : Payment of all work prescribed under this item shall be full compensation for the trench safety system including any design, testing, monitoring, inspection, or additional excavation and backfill required, for furnishing, placing, maintaining and removing all shoring, sheeting, or bracing; for required compaction; and for all labor, materials, tools, equipment, and any incidentals necessary to complete the "Trench Safety System" work.

This item will be measured for payment by the linear foot.

8. Traffic Control (Bid Item # 17): Payment shall be full compensation for the traffic control required outside of the Vista del Sol Street Improvement project area, including but not limited to permits, plans, coordination, barrels, concrete barricades, water barricades, traffic cones, caution signs, warning signs, construction signs, barrels with flashing lights, speed bumps, flag man, message boards, sand bags, impact attenuators, and any other item required to have a complete and operational traffic control system and any other jurisdictional R.O.W. requirements. Traffic control shall be developed and maintained in accordance with the standards set forth and identified in the roadway construction plans and specifications.

This item will be measured for payment by the lump sum.

9. Storm Water Pollution Prevention (Bid Item # 18): Payment shall be full compensation for the SW3P required outside of the Vista del Sol Street Improvement project area, including but not limited to the design, installation, and management in accordance with TCEQ and El Paso County requirements. Payment shall also include all maintenance, necessary adjustment to reflect work performed, and labor, tools, equipment, permit fees, and any incidentals necessary for completing the work.

This item will be measured for payment by the lump sum.

10. Rockwall Removal and Replacement (Bid Item # 19): Work under this item shall include furnishing all labor, material, equipment and performing all operations required to remove & disposal of the existing rockwall within Melendez Auto Sales. Rockwall is to be removed & disposal. No extra payment for excess removal as called for on the plans shall be made without prior written approval by the Engineer. Payment will be made at the unit price bid and will be compensation in full for all removals and for furnishing and labor, equipment, and incidentals necessary to complete the work in accordance with the Plans and the Standard Specifications.

This item will be measured for payment by the linear foot.

11. Standard 6" Concrete Curb and Gutter Removal and Replacement (Bid Item # 20): Work under this item shall include furnishing all labor, material, equipment and performing all operations required to remove, disposal & installation of the existing standard 6" concrete curb and gutter. No extra payment for excess removal as called for on the plans shall be made without prior written approval by the Engineer. Payment will be made at the unit price bid and will be compensation in full for all remove, disposal & installation and for

furnishing and labor, equipment, and incidentals necessary to complete the work in accordance with the Plans and the Standard Specifications.

This item will be measured for payment by the lineal foot.

12. Landscaping Improvements Removal and Replacement (Bid Item # 21, 22, 23, 24 & 25): Work under this item shall include furnishing all labor, material, equipment and performing all operations required to remove and replace existing landscaping rock, irrigation system and any other landscaping improvements and replace once new pipeline is installed within Melendez Auto Sales. The existing landscaping improvements will be removed and replaced to existing or better conditions. No extra payment for excess landscaping improvements removed and/or replacement as called for on the plans shall be made without prior written approval by the Engineer. Payment will be made at the unit price bid and will be compensation in full for all removals and for furnishing and placing all material, labor, compaction, equipment, and incidentals necessary to complete the work in accordance with the Plans and the Standard Specifications. Landscaping improvements replacement costs shall include material, filter fabric, irrigation piping, subgrade prep, removal and disposal of waste. Concrete curb and gutter damaged as a result of Contractor operations or as a result of the movement of Contractor equipment or vehicles shall be replaced to pre-existing conditions at Contractor's expense.

This item will be measured for payment as shown on each bid item.

13. Concrete Ramp Removal and Replacement (Bid Item # 26): Work under this item shall include furnishing all labor, material, equipment and performing all operations required to remove & disposal of the existing concrete ramp within Melendez Auto Sales. Concrete ramp is to be removed & disposal. No extra payment for excess removal as called for on the plans shall be made without prior written approval by the Engineer. Payment will be made at the unit price bid and will be compensation in full for all removals and for furnishing and labor, equipment, and incidentals necessary to complete the work in accordance with the Plans and the Standard Specifications.

This item will be measured for payment by the lump sum.

14. Video Tape of Pipeline Route (Bid Item # 27): Work under this item shall include the video taping of the project area before and after the installation of the Pipeline Improvements.

This item will be measured for payment by the lump sum.

END OF SECTION

Project: Vista del Sol Drainage &
Roadway Improvements

County: El Paso

**PROPOSAL TO THE CAMINO REAL
REGIONAL MOBILITY AUTHORITY**

**TEXAS DEPARTMENT OF TRANSPORTATION 2014 SPECIFICATIONS WORK
CONSISTING OF DRAINAGE & STREET IMPROVEMENT
EL PASO COUNTY, TEXAS**

The quantities in the proposal are approximate. The quantities of work and materials may be increased or decreased as considered necessary to complete the work as planned and contemplated.

This project is to be completed in 396 working days and will be accepted when fully completed and finished to the satisfaction of the Executive Director or designee. This project will be a 5 day standard work week.

Provide a proposal guaranty in the form of a Cashier's Check, Teller's Check (including an Official Check) or Bank Money Order on a State or National Bank or Savings and Loan Association, or State or Federally chartered Credit Union made payable to the Camino Real regional Mobility Authority in the following amount:

ONE HUNDRED THOUSAND (Dollars) (**\$100,000**)

A bid bond may be used as the required proposal guaranty. The bond form may be detached from the proposal for completion. The proposal may not be disassembled to remove the bond form. The bond must be in accordance with Item 2L of the specifications.

Any addenda issued amending this proposal and/or the plans that have been acknowledged by the bidder, become part of this proposal.

By signing the proposal the bidder certifies:

1. The only persons or parties interested in this proposal are those named and the bidder has not directly or indirectly participated in collusion, entered into an agreement or otherwise taken any action in restraint of free competitive bidding in connection with the above captioned project.
2. In the event of the award of a contract, the organization represented will secure bonds for the full amount of the contract.
3. The signatory represents and warrants that they are an authorized signatory for the organization for which the bid is submitted and they have full and complete authority to submit this bid on behalf of their firm.
4. That the certifications and representations contained in the proposal are true and accurate and the bidder intends the proposal to be taken as a genuine government record.

• **Signed: ****

(1) _____ (2) _____ (3) _____

Print Name:

(1) _____ (2) _____ (3) _____

Title:

(1) _____ (2) _____ (3) _____

Company:

(1) _____ (2) _____ (3) _____

• Signatures to comply with Item 2 of the specifications.

**Note: Complete (1) for single venture, through (2) for joint venture and through (3) for triple venture.

*** When the working days field contains an asterisk (*) refer to the Special Provisions and General Notes**

Item 2L

Instructions to Bidders

1. Introduction

Instructions to the Contractor in these specifications are generally written in active voice, imperative mood. The subject of imperative sentences is understood to be "the Contractor." The Owner's responsibilities are generally written in passive voice, indicative mood. Phrases such as "as approved," "unless otherwise approved," "upon approval," "as directed," "as verified," "as ordered," and "as determined" refer to actions of the Engineer unless otherwise stated, and it is understood that the directions, orders, or instructions to which they relate are within the limitations of and authorized by the Contract.

2. Eligibility of Bidders

Bidders on this project must be prequalified through TxDOT. Refer to TxDOT's web site for prequalification requirements. Comply with all technical prequalification requirements in the bid documents.

Bidders must provide proof of sufficient bidding capacity.

3. Issuing Bid documents

Copies will be available in CD format at no cost.

At the time Bid Documents are obtained, Bidder must provide a working e-mail address, so as to receive any addenda or clarification issued by the Owner.

The Owner will not issue bid documents if one or more of the following apply:

- the Bidder is prohibited from rebidding a specific project due to a bid error on the original bid documents,
 - the Bidder failed to enter into a Contract on the original award,
 - the Bidder was defaulted or terminated on the original Contract, unless the Owner terminated for convenience, or
 - the Bidder or a subsidiary or affiliate of the Bidder has received compensation from the Owner to participate in the preparation of the plans or specifications on which the bid or Contract is based.
 - the Bidder fails to provide proof of sufficient bidding capacity
-

4. Interpreting Estimated Quantities

The quantities listed in the bid documents are approximate and will be used for the comparison of bids. Payments will be made for actual quantities of work performed in accordance with the Contract.

5. Examining Documents and Work Locations

Examine the bid documents and specified work locations before submitting a bid for the work. Submitting a bid will be considered evidence that the Bidder has performed this examination. Borings, soil profiles, water elevations, and underground utilities shown on the plans were obtained for the use of the Owner in the preparation of plans. This information is provided for the Bidder's information only and the Owner makes no representation as to the accuracy of the data. Be aware of the difficulty of accurately classifying all material

UNIT PRICE SCHEDULE: BASE BID 1**HIGHWAY: VISTA DEL SOL
COUNTY: EL PASO****TYPE : CONSTRUCTION OF NEW NON-FREEWAY FACILITY (VISTA DEL SOL)**

Key	Item No.	Item Code	Brief Description of Item	Unit	Est. Quantity	Unit Bid Price (In Figures)	Total Amount (Quantity x Unit Price) (In Figures)
1	100	6002	PREPARING ROW	STA	50		
2	104	6009	REMOVING CONC (RIPRAP)	SY	1281		
3	104	6022	REMOVING CONC (CURB AND GUTTER)	LF	223		
4	105	6043	REMOVING STAB BASE AND ASPHALT PAV (0"-6")	SY	21,408		
5	110	6001	EXCAVATION (ROADWAY)	CY	11,499		
6	110	6003	EXCAVATION (RETENTION POND)	CY	18,520		
7	132	6004	EMBANKMENT (FINAL) (DENS CONT)(TY B)	CY	14,002		
8	170	6001	IRRIGATION SYSTEM	LS	1		
9	192	6004	PLANT MATERIAL (5-GAL)	EA	62		
10	192	6017	VEGETATION BARRIER (WEED BARRIER)	SY	9,638		
11	192	6074	TREE (MIN 2" CAL) (B&B)	EA	134		
12	192	6076	MULTI-TRUNK TREE (MIN 4" CAL)	EA	44		
13	247	6366	FL BS (CMP IN PLC) (TY A GR5) (FNL POS)	CY	10,165		
14	247	6388	FL BS (CMP IN PLC) (TY A GR5)(6")	SY	10,703		

UNIT PRICE SCHEDULE: BASE BID 1**HIGHWAY: VISTA DEL SOL
COUNTY: EL PASO****TYPE : CONSTRUCTION OF NEW NON-FREEWAY FACILITY (Vista del Sol)**

Key	Item No.	Item Code	Brief Description of Item	Unit	Est. Quantity	Unit Bid Price (In Figures)	Total Amount (Quantity x Unit Price) (In Figures)
15	251	6086	REWORK BS MTL (TY C) 10" (DENS CONT)	SY	34,213		
16	310	6006	PRIME COAT (CSS-1H)	GAL	5,211		
17	341	6041	D-GR HMA (SQ) TY-D SAC- A PG 70-22	TON	7,490		
18	400	6003	EXCAVATION AND BACKFILL FOR STRUCTURES	CY	12,940		
19	402	6001	TRENCH EXCAVATION PROTECTION	LF	1,822		
20	416	6003	DRILL SHAFT (30IN)	LF	224		
21	420	6007	CL. A CONCRETE (CHANNEL)	CY	33		
22	422	6015	APPROACH SLAB	CY	86		
23	432	6023	RIPRAP (STONE COMMON) (DRY)(8")	CY	297		
24	432	6041	RIPRAP(SPECIAL)	CY	64		
25	450	6042	PEDESTRIAN GUARDRAIL	LF	195		
26	454	VDS-01	SEALED EXPANSION JOINT (10 IN)	LF	230		
27	464	6005	RC PIPE (CL III) (24IN)	LF	762		
28	464	6007	RC PIPE (CL III) (30IN)	LF	986		

UNIT PRICE SCHEDULE: BASE BID 1**HIGHWAY: VISTA DEL SOL
COUNTY: EL PASO****TYPE : CONSTRUCTION OF NEW NON-FREEWAY FACILITY (Vista del Sol)**

Key	Item No.	Item Code	Brief Description of Item	Unit	Est. Quantity	Unit Bid Price (In Figures)	Total Amount (Quantity x Unit Price) (In Figures)
43	506	6020	CONSTRUCTION EXITS (INSTALL) (TY 1)	SY	1752		
44	506	6024	CONSTRUCTION EXITS (REMOVE)	SY	1752		
45	506	6035	SAND BAGS FOR EROSION CONTROL	EA	73		
46	506	6038	TEMP SEDMT CONT FENCE (INSTALL)	LF	10,544		
47	506	6039	TEMP SEDMT CONT FENCE (REMOVE)	LF	10,544		
48	506	6040	BIODEG EROSN CONT LOGS (INSTALL)	LF	284		
49	506	6043	BIODEG EROSN CONT LOGS (REMOVE)	LF	284		
50	508	5000	BARRICADES, SIGNS, TRAFFIC HANDLING AND CONSTRUCTING DETOURS (See CEA Plans)	LS	1		
51	508	6001	CONSTRUCTING DETOURS	SY	3,562		
52	529	6008	CONC CURB AND GUTTER (TY II)	LF	19,449		
53	529	6008	CONC CURB AND GUTTER (TY II) (Traffic Control)	LF	223		
54	530	6004	DRIVEWAY (CONC.)	SY	153		
55	530	6005	DRIVEWAY (ACP)	SY	173		
56	530	6006	DRIVEWAY (SURF TREAT)	SY	1,139		

UNIT PRICE SCHEDULE: BASE BID 1**HIGHWAY: VISTA DEL SOL
COUNTY: EL PASO****TYPE : CONSTRUCTION OF NEW NON-FREEWAY FACILITY (Vista del Sol)**

Key	Item No.	Item Code	Brief Description of Item	Unit	Est. Quantity	Unit Bid Price (In Figures)	Total Amount (Quantity x Unit Price) (In Figures)
29	464	6008	RC PIPE (CL III) (36IN)	LF	74		
30	465	VDS-02	DRAINAGE STRUCTURE INLET BOX (16 GRATE)	EA	2		
31	465	VDS-03	DRAINAGE STRUCTURE INLET BOX (22 GRATE)	EA	2		
32	465	VDS-04	DRAINAGE STRUCTURE BOX (UNDER MEDIAN)	EA	2		
33	465	VDS-05	DRAINAGE STRUCTURE BOX (UNDER SIDEWALK)	EA	2		
34	465	6002	MANH (COMPL) (PRM) (48IN)	EA	4		
35	465	6275	JUNCTION BOX (MANHOLE)	EA	3		
36	465	VDS-06	3 GRATE TYPE I INLET	EA	5		
37	465	VDS-07	3 GRATE TYPE III INLET	EA	1		
38	466	6099	30 IN HEADWALL W/ DISSIPATORS	EA	1		
39	466	6101	36 IN HEADWALL W/ DISSIPATORS	EA	1		
40	466	VDS-08	HEADWALL STRUCTURE (CONC CHANL OUTFALL)	EA	1		
41	500	6001	MOBILIZATION	LS	1		
42	502	6001	BARRICADES, SIGNS, & TRAFFIC HANDLING	MO	18		

UNIT PRICE SCHEDULE: BASE BID 1**HIGHWAY: VISTA DEL SOL
COUNTY:EL PASO****TYPE : CONSTRUCTION OF NEW NON-FREEWAY FACILITY (Vista del Sol)**

Key	Item No.	Item Code	Brief Description of Item	Unit	Est. Quantity	Unit Bid Price (In Figures)	Total Amount (Quantity x Unit Price) (In Figures)
57	531	6002	CONCRETE SIDEWALKS (5")	SY	10,195		
58	531	6005	CURB RAMPS (TY2)	EA	2		
59	531	6008	CURB RAMPS (TY 5)	EA	3		
60	531	6010	CURB RAMPS (TY 7)	EA	13		
61	550	6001	CHAIN LINK FENCE	LF	1048		
62	610	6214	IN RD IL AM (TY SA) 40T-8 (250W EQ) LED	EA	8		
63	610	6215	IN RD IL AM (TY SA) 40T-8-8 (250W EQ) LED	EA	19		
64	618	6023	CONDT (PVC) (SCHD 40) (2") (TRENCH)	LF	4,186		
65	618	6024	CONDT (PVC) (SCHD 40) (2") (BORE)	LF	755		
66	620	6007	ELEC CONDR (NO. 8) BARE	LF	4,990		
67	620	6008	ELEC CONDR (NO. 8) INSULATED	LF	9,980		
68	624	6001	GROUND BOX TY A (122311)	EA	8		
69	624	6002	GROUND BOX TY A (122311) W/APRON	EA	4		
70	628	6032	ELEC SRV TYA 240/480 100 (NS) SS (E) PS (U)	EA	3		

UNIT PRICE SCHEDULE: BASE BID 1**HIGHWAY: VISTA DEL SOL
COUNTY: EL PASO****TYPE : CONSTRUCTION OF NEW NON FREEWAY FACILITY (Vista del Sol)**

Key	Item No.	Item Code	Brief Description of Item	Unit	Est. Quantity	Unit Bid Price (In Figures)	Total Amount (Quantity x Unit Price) (In Figures)
85	672	6007	REFL PAV MRKR TY I-C	EA	207		
86	677	6001	ELIM EXT PAV MRK & MRKS (4")	LF	229		
87	677	6008	ELIM EXT PAV MRK & MRKS (ARROW)	EA	5		
88	677	6009	ELIM EXT PAV MRK & MRKS (DBL ARROW)	EA	5		
89	677	6012	ELIM EXT PAV MRK & MRKS (WORD)	EA	1		
90	678	6001	PAV SURF PREP FOR MRK (4")	LF	2,527		
91	678	6004	PAV SURF PREP FOR MRK (8")	LF	1,613		
92	678	6006	PAV SURF PREP FOR MRK (12")	LF	1,045		
93	678	6008	PAV SURF PREP FOR MRK (24")	LF	199		
94	1002	2001	LANDSCAPE BOULDERS TYP 1 (24" X 24")	EA	286		
95	1002	2002	LANDSCAPE BOULDERS TYP 2 (36" X 36")	EA	6		
96	1002	2003	LANDSCAPE BOULDERS (24" X 24" RR)	EA	45		
97	1005	6001	LOOSE AGGR FOR GROUNDCOVER (TYP 1)	CY	804		
98	1005	6002	LOOSE AGGR FOR GROUNDCOVER (TYP 2)	CY	14		

UNIT PRICE SCHEDULE: BASE BID 1**HIGHWAY: VISTA DEL SOL
COUNTY:EL PASO****TYPE : CONSTRUCTION OF NEW NON-FREEWAY FACILITY (Vista del Sol)**

Key	Item No.	Item Code	Brief Description of Item	Unit	Est. Quantity	Unit Bid Price (In Figures)	Total Amount (Quantity x Unit Price) (In Figures)
71	644	6001	IN SM RD SN SUP&AM TY 10BWG(1) SA(P)	EA	13		
72	644	6068	RELOCATE SM RD SN SUP&AM TY 10BWG	EA	1		
73	644	6076	REMOVE SM RD SN SUP & AM	EA	6		
74	662	6061	WK ZN PAV MRK REMOV (W) 4" (DOT)	LF	145		
75	662	6063	WK ZN PAV MRK REMOV (W) 4" (SLD)	LF	120		
76	662	6080	WK ZN PAV MRK REMOV (W) (ARROW)	EA	5		
77	662	6081	WK ZN PAV MRK REMOV (W) (DBL ARROW)	EA	1		
78	662	6090	WK ZN PAV MRK REMOV (W) (WORD)	EA	1		
79	662	6094	WK ZN PAV MRK REMOV (Y) 4" (DOT)	LF	189		
80	662	6095	WK ZN PAV MRK REMOV (Y) 4" (SLD)	LF	8,303		
81	666	6003	REFL PAV MRK TY II (W) 4" (BRK)	LF	2,527		
82	666	6036	REFL PAV MRK TY II (W) 8" (SLD)	LF	1,613		
83	666	6042	REFL PAV MRK TY II (W) 12" (SLD)	LF	1,045		
84	666	6048	REFL PAV MRK TY II (W) 24" (SLD)	LF	199		

UNIT PRICE SCHEDULE: BASE BID 1**HIGHWAY: VISTA DEL SOL
COUNTY:EL PASO****TYPE : CONSTRUCTION OF NEW NON-FREEWAY FACILITY (Vista del Sol)**

Key	Item No.	Item Code	Brief Description of Item	Unit	Est. Quantity	Unit Bid Price (In Figures)	Total Amount (Quantity x Unit Price) (In Figures)
99	1005	6003	LOOSE AGGR FOR GROUNDCOVER (TYP 3)	CY	24		
100	1005	6004	LOOSE AGGR FOR GROUNDCOVER (TYP 4)	CY	12		
101		VDS-09	RETENTION POND, FINE GRADING, MAINTENANCE ROAD, ACCESS ROAD, DEPTH GUAGE, 3" COMPACTED SCREENING AND SIGNAGE	LS	1		
102		VDS-10	18 FT. DOUBLE SWING GATE (CHAIN LINK)	EA	1		

Totals \$:

\$

-

SIGNED

TITLE

DATE

UNIT PRICE SCHEDULE FOR BASE BID NO. II:
VISTA DEL SOL 24-INCH WATER MAIN EXTENSION (PHASE III) & SANITARY SEWER
IMPROVEMENTS

<u>Item No.</u>	<u>Estimated Quantity</u>	<u>UOM</u>	<u>Brief Description of Item</u>	<u>Unit Bid Price</u>	<u>Extended Amount (Qty x Unit Price)</u>
1.	1	L.S.	Insurance, Bonds, and Mobilization/Demobilization, Not to Exceed 5% of Bid Item No. 2 through 20.	\$ _____	\$ _____
2.	3,800	L.F.	Furnish and Install 24-Inch Diameter Approved Water Pipe, as Specified, Installed with fittings in trench. Complete in Place.	\$ _____	\$ _____
3.	540	L.F.	Furnish and Install 16-Inch Diameter Approved Water Pipe, as Specified, installed with fittings, valves and accessories in trench. Complete in Place.	\$ _____	\$ _____
4.	400	L.F.	Furnish and Install 12-Inch Diameter Approved Water Pipe, as Specified, installed with fittings, valves and accessories in trench. Complete in Place.	\$ _____	\$ _____
5.	80	L.F.	Furnish and Install 8-Inch Diameter Approved Water Pipe, as Specified, installed with fittings, valves and accessories in trench. Complete in Place.	\$ _____	\$ _____
6.	300	L.F.	Furnish and Install 32-Inch Diameter HDPE Casing Installed by Open-Cut Methods, including all appurtenances. Complete in Place.	\$ _____	\$ _____
7.	1	EA.	Furnish and Install 24-Inch Blow-off Valves with Manhole and related appurtenances. Complete in Place.	\$ _____	\$ _____
8.	1	EA.	Furnish and Install 16-Inch Blow-off Valves with Manhole and related appurtenances. Complete in Place.	\$ _____	\$ _____
9.	4	EA.	Furnish and Install Buried 24-inch Butterfly Valves with Manhole and related appurtenances. Complete in Place.	\$ _____	\$ _____
10.	2	EA.	Furnish and Install Buried 16-inch Butterfly Valves with Manhole and related appurtenances. Complete in Place.	\$ _____	\$ _____

UNIT PRICE SCHEDULE FOR BASE BID NO. II:
VISTA DEL SOL 24-INCH WATER MAIN EXTENSION (PHASE III) & SANITARY SEWER
IMPROVEMENTS

<u>Item No.</u>	<u>Estimated Quantity</u>	<u>UOM</u>	<u>Brief Description of Item</u>	<u>Unit Bid Price</u>	<u>Extended Amount (Qty x Unit Price)</u>
11.	2	EA.	Furnish and Install Buried 12-inch Gate Valves with all related appurtenances. Complete in Place.	\$ _____	\$ _____
11A.	1	EA	Furnish and Install Buried 12-inch Gate Valve and Tapping Sleeve Assembly, with all related appurtenances. Complete in Place.	\$ _____	\$ _____
11B.	1	EA	Furnish and Install Buried 8-inch Gate Valve with all related appurtenances. Complete in Place.	\$ _____	\$ _____
12.	1	EA.	Furnish and Install 6-inch Combination Air Release/Vacuum Valve with Manhole and related appurtenances. Complete in Place.	\$ _____	\$ _____
13.	1	EA.	Furnish and Install 4-inch Combination Air Release/Vacuum Valve with Manhole and related appurtenances. Complete in Place.	\$ _____	\$ _____
14.	1	EA.	Furnish and Install 3-inch Combination Air Release/Vacuum Valve with Manhole and related appurtenances. Complete in Place.	\$ _____	\$ _____
15.	1	L.S.	Furnish and Install Corrosion Protection System for <u>4,340</u> L.F. of 24-inch approved pipe. Complete in Place.	\$ _____	\$ _____
16.	3,000	LB.	Additional Fittings. Complete in Place.	\$ _____	\$ _____
17.	4,760	L.F.	Trench Safety System for Pipelines: Trench Box Method or Shoring, Sheet piling and Bracing Methods. Complete in Place.	\$ _____	\$ _____
18.	1	L.S.	Provide and Maintain Approved Traffic Control. Complete in Place.	\$ _____	\$ _____

UNIT PRICE SCHEDULE FOR BASE BID NO. II:
VISTA DEL SOL 24-INCH WATER MAIN EXTENSION (PHASE III) & SANITARY SEWER
IMPROVEMENTS

<u>Item No.</u>	<u>Estimated Quantity</u>	<u>UOM</u>	<u>Brief Description of Item</u>	<u>Unit Bid Price</u>	<u>Extended Amount (Qty x Unit Price)</u>
19.	1	L.S.	Storm Water Pollution Prevention Plan. Complete in Place.	\$ _____	\$ _____
20.	1	L.S.	Video Tape Pipeline Route, Before and After Construction.	\$ _____	\$ _____

Quantities are not guaranteed.

TOTAL BID PRICE (ITEMS 1 THROUGH 20) \$ _____

SIGNED _____

TITLE _____

DATE _____

UNIT PRICE SCHEDULE FOR BASE BID NO. III:
VISTA DEL SOL 24-INCH WATER MAIN EXTENSION (PHASE III) & SANITARY SEWER
IMPROVEMENTS

<u>Item No.</u>	<u>Estimated Quantity</u>	<u>UOM</u>	<u>Brief Description of Item</u>	<u>Unit Bid Price</u>	<u>Extended Amount (Qty x Unit Price)</u>
1.	1	L.S.	Insurance, Bonds, and Mobilization/Demobilization, Not to Exceed 5% of Bid Item No. 2 through 27.	\$	\$
2.	540	L.F.	Furnish and Install 15-Inch Diameter Approved Sanitary Sewer PVC Pipe, as Specified. Complete in Place.	\$	\$
3.	1,200	L.F.	Furnish and Install 12-Inch (PVC SDR-35) Diameter Approved Sanitary Sewer PVC Pipe, as Specified. Complete in Place.	\$	\$
4.	1,500	L.F.	Furnish and Install 12-Inch (PVC C900, DR14) Diameter Approved Sanitary Sewer PVC Pipe, as Specified. Complete in Place.	\$	\$
5.	1,100	L.F.	Furnish and Install 8-Inch (PVC SDR-35) Diameter Approved Sanitary Sewer PVC Pipe, as Specified. Complete in Place.	\$	\$
6.	310	L.F.	Furnish and Install 8-Inch Diameter Approved Sanitary Sewer PVC (C-900, DR18) Pipe, as Specified. Complete in Place.	\$	\$
7.	20	L.F.	Furnish and Install 24-Inch Diameter Steel Casing Installed by Open-Cut Methods, including all appurtenances. Complete in Place.	\$	\$
8.	20	L.F.	Furnish and Install 16-Inch Diameter Steel Casing Installed by Open-Cut Methods, including all appurtenances. Complete in Place.	\$	\$
9.	10	EA.	Furnish and Install 48-Inch Diameter Standard Pre-Cast Concrete Manhole (Type A1). Complete in Place.	\$	\$

UNIT PRICE SCHEDULE FOR BASE BID NO. III:
VISTA DEL SOL 24-INCH WATER MAIN EXTENSION (PHASE III) & SANITARY SEWER
IMPROVEMENTS

<u>Item No.</u>	<u>Estimated Quantity</u>	<u>UOM</u>	<u>Brief Description of Item</u>	<u>Unit Bid Price</u>	<u>Extended Amount (Qty x Unit Price)</u>
10.	35	V.F.	Additional Depth of 48-Inch (Type A1 Manholes). Complete in Place.	\$	\$
11.	1	EA.	Furnish and Install 72-Inch Diameter Standard Pre-Cast Concrete Manhole (Type A1). Complete in Place.	\$	\$
12.	3	EA.	Furnish and Install 72-Inch Diameter Standard Pre-Cast Drop Connection Concrete Manhole (Type A1). Complete in Place.	\$	\$
13.	80	V.F.	Additional Depth of 72-Inch (Type A1 Manholes). Complete in Place.	\$	\$
14.	4	EA.	Installation of 6-inch Commercial Services, Including All Material & Labor and all Related Appurtenances. Complete in Place.	\$	\$
15.	610	S.Y.	Pavement Removal and Replacement, Including 2-SAC, as Specified. Complete in Place.	\$	\$
16.	4,640	L.F.	Trench Safety System for Pipelines: Trench Box Method or Shoring, Sheet piling and Bracing Methods. Complete in Place.	\$	\$
17.	1	L.S.	Provide and Maintain Approved Traffic Control. Complete in Place.	\$	\$
18.	1	L.S.	Storm Water Pollution Prevention Plan. Complete in Place.	\$	\$

UNIT PRICE SCHEDULE FOR BASE BID NO. III:
VISTA DEL SOL 24-INCH WATER MAIN EXTENSION (PHASE III) & SANITARY SEWER
IMPROVEMENTS

<u>Item No.</u>	<u>Estimated Quantity</u>	<u>UOM</u>	<u>Brief Description of Item</u>	<u>Unit Bid Price</u>	<u>Extended Amount (Qty x Unit Price)</u>
19.	50	L.F.	Removal and Replacement of 4-ft Rockwall at Melendez Auto Sales, Including All Material & Labor and all Related Appurtenances. Complete in Place.	\$ _____	\$ _____
20.	100	L.F.	Removal and Replacement of Standard 6" Concrete Curb and Gutter at Melendez Auto Sales, Including All Material & Labor and all Related Appurtenances. Complete in Place.	\$ _____	\$ _____
21.	1	L.S.	Landscaping Improvements - Removal and Replacement of, Irrigation System at Melendez Auto Sales Including All Material & Labor and all Related Appurtenances. Complete in Place.	\$ _____	\$ _____
22.	8	C.Y.	Landscaping Improvements - Removal and Replacement of, Landscaping Rock (3" thick) at Melendez Auto Sales Including All Material & Labor and all Related Appurtenances. Complete in Place.	\$ _____	\$ _____
23.	160	S.Y.	Landscaping Improvements - Removal and Replacement of, Landscaping weed barrier under the landscaping rock at Melendez Auto Sales, Including All Material & Labor and all Related Appurtenances. Complete in Place.	\$ _____	\$ _____
24.	5	EA.	Landscaping Improvements - Removal and Replacement of 2" Caliber trees to match existing at Melendez Auto Sales, Including All Material & Labor and all Related Appurtenances. Complete in Place.	\$ _____	\$ _____
25.	5	EA.	Landscaping Improvements - Removal and Replacement of existing shrubs and bushes to match existing (5 gal.) at Melendez Auto Sales, Including All Material & Labor and all Related Appurtenances. Complete in Place.	\$ _____	\$ _____

UNIT PRICE SCHEDULE FOR BASE BID NO. III:
VISTA DEL SOL 24-INCH WATER MAIN EXTENSION (PHASE III) & SANITARY SEWER
IMPROVEMENTS

<u>Item No.</u>	<u>Estimated Quantity</u>	<u>UOM</u>	<u>Brief Description of Item</u>	<u>Unit Bid Price</u>	<u>Extended Amount (Qty x Unit Price)</u>
26.	1	L.S.	Removal & Disposal of Concrete Truck Ramp at Melendez Auto Sales, Including All Material & Labor and all Related Appurtenances. Complete in Place.	\$ _____	\$ _____
27.	1	L.S.	Video Tape Pipeline Route, Before and After Construction.	\$ _____	\$ _____

Quantities are not guaranteed.

TOTAL BID PRICE (ITEMS 1 THROUGH 27) \$ _____

SIGNED _____

TITLE _____

DATE _____

VISTA DEL SOL
SUMMARY OF QUANTITIES

TRAFFIC CONTROL

Bid Item	Description	Unit	Quantity
104 6022	REMOVING CONC (CURB AND GUTTER)	LF	223
500 6001	MOBILIZATION	LS	1
502 6001	BARRICADES, SIGNS AND TRAFFIC HANDLING	MO	18
508 6001	CONSTRUCTION DETOURS	SY	3,562
529 6008	CONC CURB AND GUTTER (TY II)	LF	223
662 6061	WK ZN PAV MRK REMOV (W) 4" (DOT)	LF	145
662 6063	WK ZN PAV MRK REMOV (W) 4" (SLD)	LF	120
662 6080	WK ZN PAV MRK REMOV (W) (ARROW)	EA	5
662 6081	WK ZN PAV MRK REMOV (W) (DBL ARROW)	EA	1
662 6090	WK ZN PAV MRK REMOV (W) (WORD)	EA	1
662 6094	WK ZN PAV MRK REMOV (Y) 4" (DOT)	LF	189
662 6095	WK ZN PAV MRK REMOV (Y) 4" (SLD)	LF	8,303
677 6001	ELIM EXT PAV MRK & MRKS (4")	LF	229
677 6008	ELIM EX PAV MRK & MRKS (ARROW)	EA	5
677 6009	ELIM EXT PAV MRK & MRKS (DBL ARROW)	EA	5
677 6012	ELIM EXT PAV MRK & MRKS (WORD)	EA	1

ROADWAY

Bid Item	Description	Unit	Quantity
132 6004	EMBANKMENT (FINAL)(DENS CONT)(TY B)	CY	14,002
247 6386	FL BS (CMP IN PLC)(TY A GR 5)(FINAL POS)	CY	10,165
247 6388	FL BS (CMP IN PLC)(TY A GR 5)(6")	SY	10,703
251 6086	REWORK BS MTL (TY C) 10" (DENS CONT)	SY	34,213
310 6006	PRIME COAT (CSS-1H)	GAL	5,211
341 6041	D-GR HMA(SQ) TY-D SAC-A PG 70-22	TON	7,490
529 6008	CONC CURB & GUTTER (TY II)	LF	19,449
530 6004	DRIVEWAY (CONC)	SY	153
530 6005	DRIVEWAY (ACP)	SY	173
530 6006	DRIVEWAY (SURF TREAT)	SY	1,139
531 6002	CONC SIDEWALKS (5")	SY	10,195
531 6005	CURB RAMPS (TY 2)	EA	2
531 6008	CURB RAMPS (TY 5)	EA	3
531 6010	CURB RAMPS (TY 7)	EA	13

DRAINAGE

Bid Item	Description	Unit	Quantity
400 6003	STRUCTURE EXCAV(PIPE)	CY	12940
402 6001	TRENCH EXCAVATION PROTECTION	LF	1822
420 6007	CL A CONC(CHANNEL)	CY	33
422 6015	APPROACH SLAB	CY	86
432 6023	RIPRAP (STONE COMMON)(DRY)(8")	CY	297
432 6041	RIPRAP (SPECIAL)	CY	64
450 6042	PEDESTRIAN GUARD RAIL	LF	195
454 VDS01	SEALED EXPANSION JOINT(10")	LF	230
464 6005	RC PIPE (CL III) (24IN)	LF	762
464 6007	RC PIPE (CL III) (30IN)	LF	986
464 6008	RC PIPE (CL III) (36IN)	LF	74
465 6002	MANH (COMPL)(PRM)(48IN)	EA	4
465 6275	JUNCTION BOX (MANHOLE)	EA	3
465 VDS02	DRAINAGE STRUCTURE INLET BOX (16 GRATE)	EA	2
465 VDS03	DRAINAGE STRUCTURE INLET BOX (22 GRATE)	EA	2
465 VDS04	DRAINAGE STRUCTURE BOX UNDER MEDIAN	EA	2
465 VDS05	DRAINAGE STRUCTURE BOX UNDER SIDEWALK	EA	2
465 VDS06	3 GRATE TYPE I INLET	EA	5
465 VDS07	3 GRATE TYPE III INLET	EA	1
466 6099	30 IN HEADWALL W/ DISSIPATORS	EA	1
466 6101	36 IN HEADWALL W/ DISSIPATORS	EA	1
466 VDS08	HEADWALL STRUCTURE (CONC CHANNEL OUTFALL)	EA	1
550 6001	CHAIN LINK FENCE(INSTALL)(6')	LF	1048
VDS09	RETENTION POND	LS	1
VDS10	18 FT DOUBLE SWING GATE (CHAIN LINK)	EA	1

SIGNING, PAVEMENT MARKINGS, AND DELINEATION

Bid Item	Description	Unit	Quantity
644 6001	INS SM RD SN SUP & AM TY 10BWG (1) SA (P)	EA	13
644 6068	RELOCATE SM RD SN SUP&AM TY 10BWG	EA	1
644 6076	REMOVE SM RD SN SUP & AM	EA	6
666 6003	REFL PAV MRK TY I (W) 4" (BRK)	LF	2,527
666 6036	REFL PAV MRK TY I (W) 8" (SLD)	LF	1,613
666 6042	REFL PAV MRK TY I (W) 12" (SLD)	LF	1,045
666 6048	REFL PAV MRK TY I (W) 24" (SLD)	LF	199
672 6007	REFL PAV MRKR TY I-C	EA	207
678 6001	PAV SURF PREP FOR MRK (4")	LF	2,527
678 6004	PAV SURF PREP FOR MRK (8")	LF	1,613
678 6006	PAV SURF PREP FOR MRK (12")	LF	1,045
678 6008	PAV SURF PREP FOR MRK (24")	LF	199

LANDSCAPING

Bid Item	Description	Unit	Quantity
170 6001	IRRIGATION SYSTEM	LS	1
192 6004	PLANT MATER 5 GAL	EA	62
192 6017	VEGETATION BARRIER (WEED BARRIER)	SY	9,638
192 6074	TREE MIN 2" CAL	EA	134
192 6076	MULTI-TRUNK TREE (MIN 4" CAL)	EA	44
1002 2001	LANDSCAPE BOULDERS TYP 1 (24"x24")	EA	286
1002 2002	LANDSCAPE BOULDERS TYP 2 (36"x36")	EA	6
1002 2003	LANDSCAPE BOULDERS TYP 3 (24"x24"RR)	EA	45
1005 6001	LOOSE AGG FOR GROUND COVER (TYP 1)	CY	804
1005 6002	LOOSE AGG FOR GROUND COVER (TYP 2)	CY	14
1005 6003	LOOSE AGG FOR GROUND COVER (TYP 3)	CY	24
1005 6004	LOOSE AGG FOR GROUND COVER (TYP 4)	CY	12

ILLUMINATION

Bid Item	Description	Unit	Quantity
416 6003	DRILL SHAFT (30 IN)	LF	224
610 6214	IN RD IL AM (TY SA) 40T-8 (250W EQ) LED	EA	8
610 6215	IN RD IL AM (TY SA) 40T-8-8 (250W EQ) LED	EA	19
618 6023	CONDT (PVC) (SCHD 40) (2")	LF	4,186
618 6047	CONDT (PVC) (SCHD 80) (2") (BORE)	LF	755
620 6007	ELEC CONDR (NO. 8) BARE	LF	4,990
620 6008	ELEC CONDR (NO. 8) INSULATED	LF	9,980
624 6001	GROUND BOX TY A (122311)	EA	8
624 6002	GROUND BOX TY A (122311) W / APRON	EA	4
628 6032	ELC SRV TY A 240 / 480 100 (NS) SS (E) PS (U)	EA	3

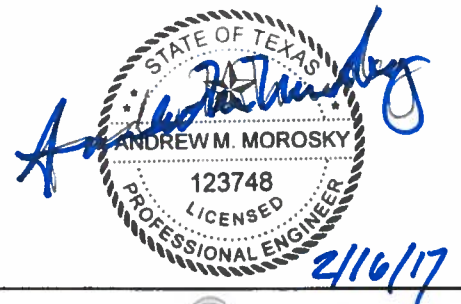
EROSION CONTROL

Bid Item	Description	Unit	Quantity
506 6020	CONSTRUCTION EXITS (INSTALL) (TY 1)	SY	1752
506 6024	CONSTRUCTION EXITS (REMOVE)	SY	1752
506 6035	SAND BAGS FOR EROSION CONTROL	EA	73
506 6038	TEMP SEDMT CONT FENCE	LF	10544
506 6039	TEMP SEDMT CONT FENCE (REMOVE)	LF	10544
506 6040	BIODEG EROSN CONT LOGS (8")	LF	284
506 6043	BIODEG EROSN CONT LOGS (8")(REMOVE)	LF	284

REMOVALS

Bid Item	Description	Unit	Quantity
100 6002	PREPARING ROW	STA	50
104 6009	REMOVING CONC (RIPRAP)	SY	1281
105 6043	REMOVING STAB BASE AND ASPHALT PAV (0"-6")	SY	21,408
110 6001	EXCAVATION (ROADWAY)	CY	11,499
110 6003	EXCAVATION (RETENTION POND)	CY	18,520

REVISD DATE 2/16/2017

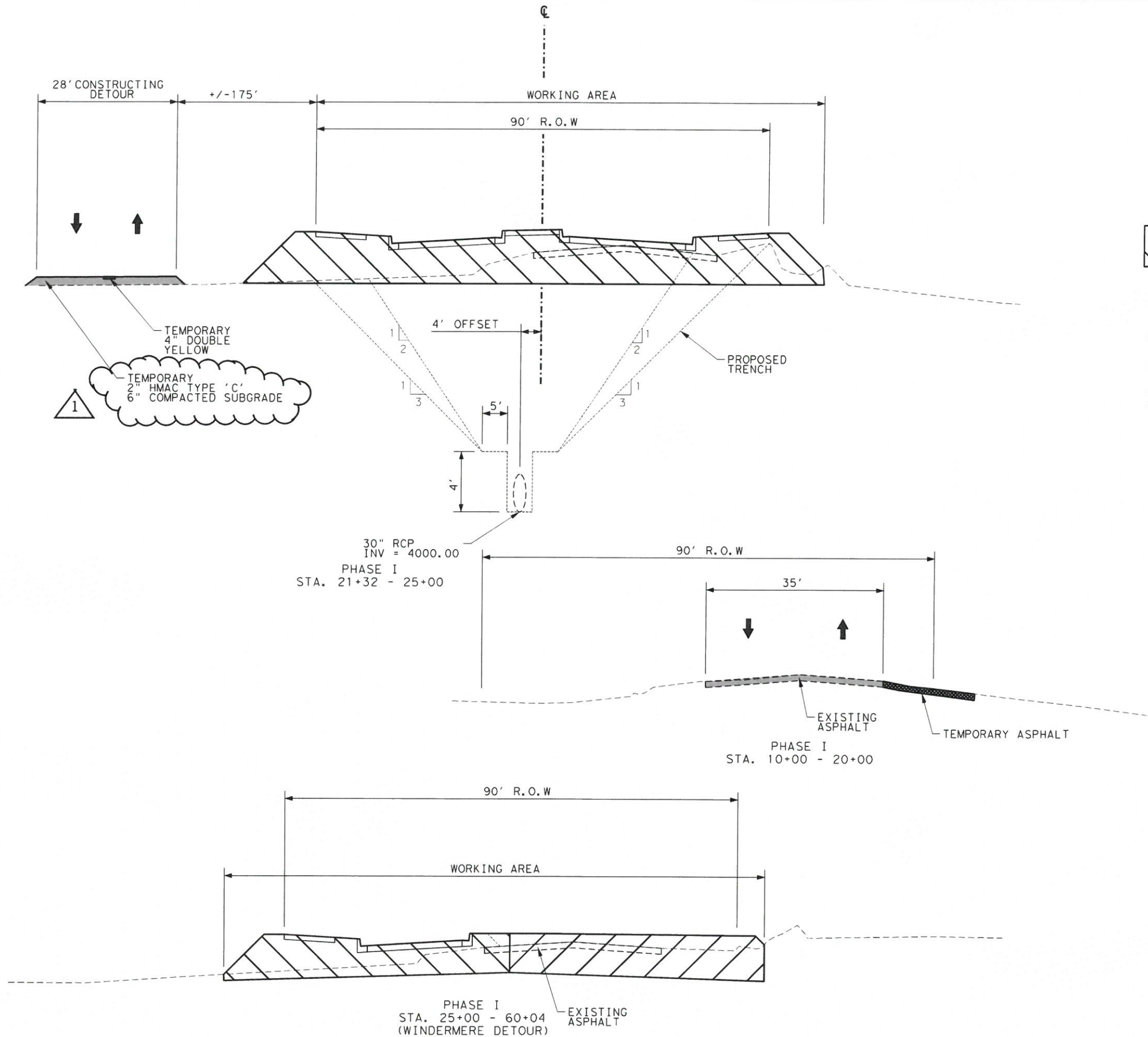


AECOM 9400 AMBERGLEN BOULEVARD
AUSTIN, TEXAS 78729
AECOM Technical Services Inc. F- 3580 512-457-7700

ESTIMATE & QUANTITIES

SHEET 1 OF 1

DSN:	FED. RD. DIV. NO.	STATE	PROJECT NO.	HIGHWAY NO.
CHK1	6	TEXAS		VISTA DEL SOL
DRN:	STATE DISTRICT	COUNTY	CONTROL SECTION NO.	JOB NO.
CHK2	EL PASO	EL PASO		3-A1



LEGEND

CHANNELIZING DRUM

TRAFFIC FLOW ARROW

WORK AREA

NOTE:
TEMPORARY ASPHALT SHALL BE
INSTALLED DURING OFF PEAK
HOURS AND SHALL NOT IMPEDE
WITH EXISTING TRAFFIC FLOW.
TEMPORARY ASPHALT SHALL ALSO
BE CONSTRUCTED WITH PHASE I.

SEE PHASE III TYPICAL
SECTIONS FOR DETAIL.



CAMINO REAL
REGIONAL MOBILITY
AUTHORITY

TRE & ASSOCIATES
Engineering Solutions
TBP# FIRM No. 13587
110 Mesa Park Drive, Suite 200
El Paso, Texas 79912
Office: (915) 852-9093
Fax: (915) 829-8006
6101 W. Courtyard Dr., Bldg. 1, Ste. 100
Austin, Texas 78730
Office: (512) 358-4049
Fax: (512) 366-5374

PHASE I TYPICAL SECTIONS

SHEET 1 OF 4

DSN:	STATE	HIGHWAY
CHK:	TEXAS	VISTA
DRN:	COUNTY	DE SOL
CHK:	EL PASO	SHEET
		18-A1

LEGEND

- - - = H. G. L.
- [Symbol] = GRATE INLETS
- [Symbol] = STORM SEWER RCP

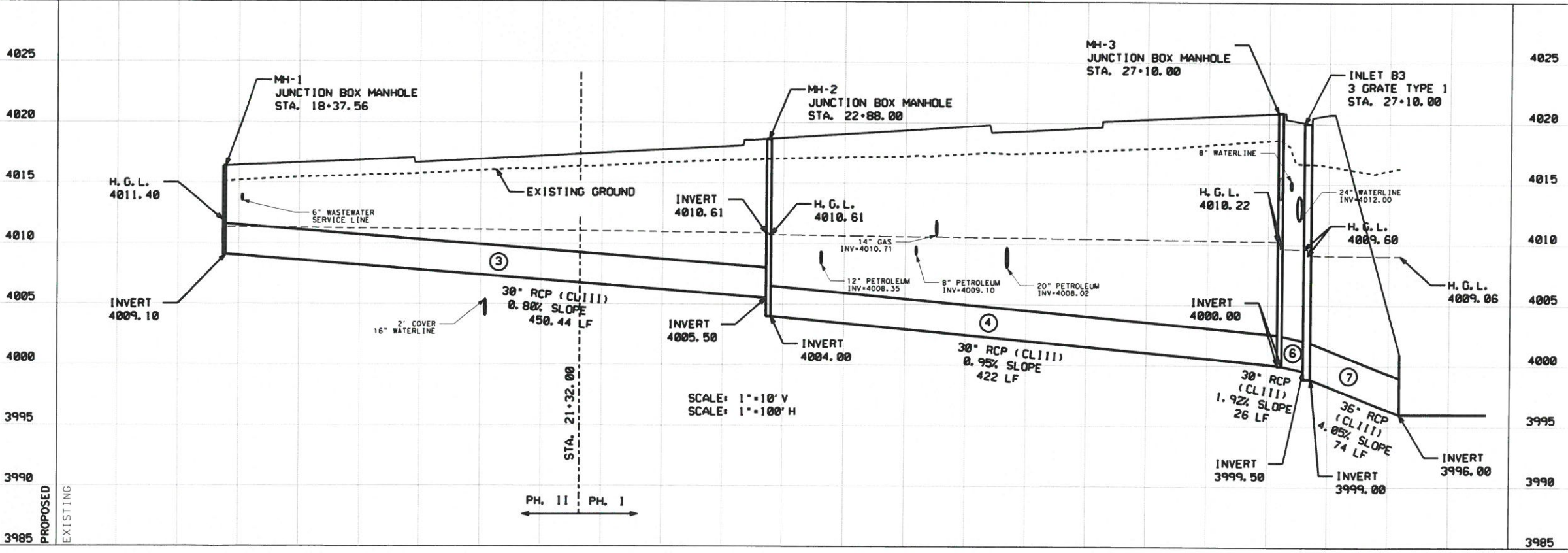
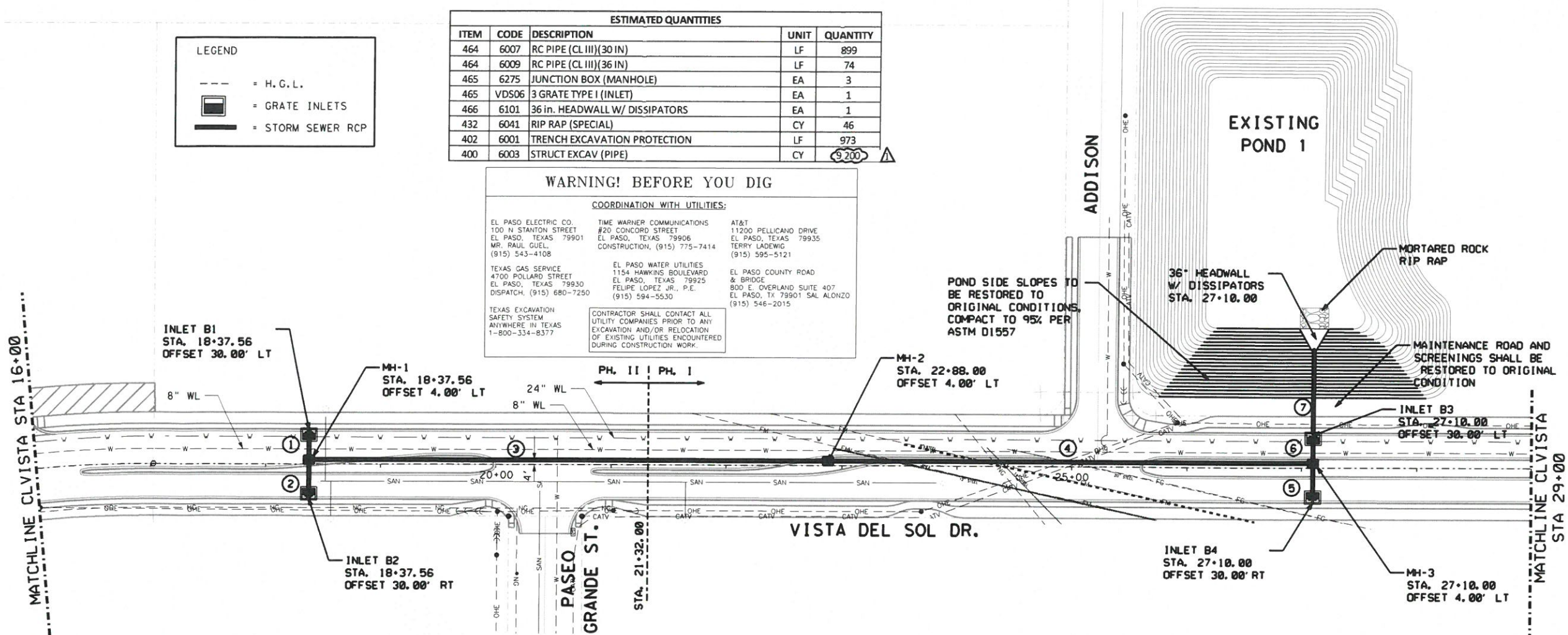
ESTIMATED QUANTITIES				
ITEM	CODE	DESCRIPTION	UNIT	QUANTITY
464	6007	RC PIPE (CL III) (30 IN)	LF	899
464	6009	RC PIPE (CL III) (36 IN)	LF	74
465	6275	JUNCTION BOX (MANHOLE)	EA	3
465	VDS06	3 GRATE TYPE I (INLET)	EA	1
466	6101	36 in. HEADWALL W/ DISSIPATORS	EA	1
432	6041	RIP RAP (SPECIAL)	CY	46
402	6001	TRENCH EXCAVATION PROTECTION	LF	973
400	6003	STRUCT EXCAV (PIPE)	CY	9.200

WARNING! BEFORE YOU DIG

COORDINATION WITH UTILITIES:

EL PASO ELECTRIC CO. 100 N STANTON STREET EL PASO, TEXAS 79901 MR. RAUL GUEL (915) 543-4108	TIME WARNER COMMUNICATIONS #20 CONCORD STREET EL PASO, TEXAS 79906 CONSTRUCTION, (915) 775-7414	AT&T 11200 PELLICANO DRIVE EL PASO, TEXAS 79935 TERRY LADEWIG (915) 595-5121
TEXAS GAS SERVICE 4700 POLLARD STREET EL PASO, TEXAS 79930 DISPATCH, (915) 680-7250	EL PASO WATER UTILITIES 1154 HAWKINS BOULEVARD EL PASO, TEXAS 79925 FELIPE LOPEZ JR., P.E. (915) 594-5530	EL PASO COUNTY ROAD & BRIDGE 800 E. OVERLAND SUITE 407 EL PASO, TX 79901 SAL ALONZO (915) 546-2015

CONTRACTOR SHALL CONTACT ALL UTILITY COMPANIES PRIOR TO ANY EXCAVATION AND/OR RELOCATION OF EXISTING UTILITIES ENCOUNTERED DURING CONSTRUCTION WORK.



02/16/2017

CAMINO REAL
REGIONAL MOBILITY
AUTHORITY

TRE & ASSOCIATES
Engineering Solutions

110 Mesa Park Drive, Suite 200
El Paso, Texas 79912
Office: (915) 852-9093
Fax: (915) 829-8506

6101 W. Courtyard Dr., Bldg. 1, Ste. 100
Austin, Texas 78730
Office: (512) 358-4048
Fax: (512) 350-5374

STORM SEWER
PLAN & PROFILE

STA 16+00 TO STA 29+00

SCALE: 1"=10' V
SCALE: 1"=100' H

SHEET 1 OF 3

DSN:	STATE	HIGHWAY
CHK:	TEXAS	VISTA DEL SOL
DRN:	COUNTY	SHEET
CHK:	EL PASO	89-A1

2/16/2017 3:32:24 PM

BW*pdf.plt+cfp

c:\pwworking\dec000\apineda\0374422\VISTA-S-DR-SSPP-03.dgn

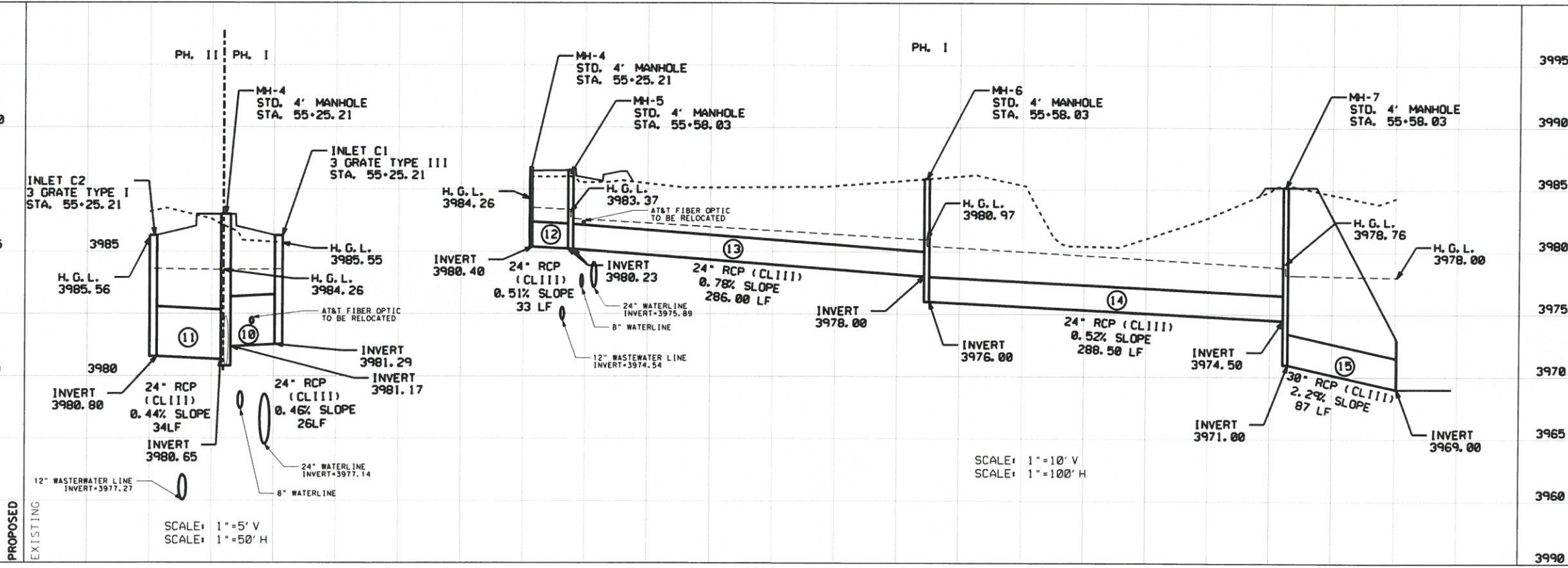
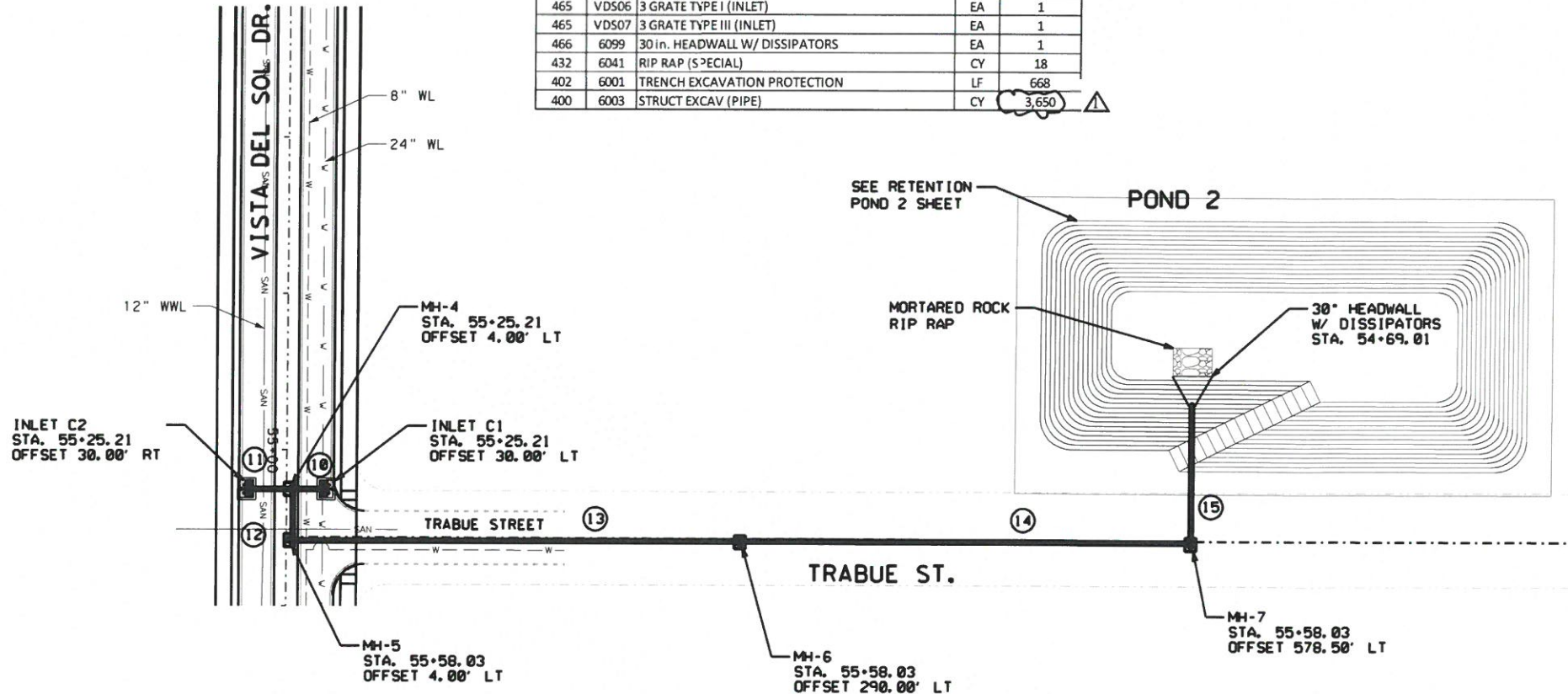
LEGEND

= H. G. L.

= GRATE INLETS

= STORM SEWER RCP

ESTIMATED QUANTITIES				
ITEM	CODE	DESCRIPTION	UNIT	QUANTITY
464	6005	RC PIPE (CL III)(24 IN)	LF	668
464	6007	RC PIPE (CL III)(30 IN)	LF	87
465	6002	MANH(CO MPL)(PRM)(48 IN)	EA	4
465	VDS06	3 GRATE TYPE I (INLET)	EA	1
465	VDS07	3 GRATE TYPE III (INLET)	EA	1
466	6099	30 in. HEADWALL W/ DISSIPATORS	EA	1
432	6041	RIP RAP (SPECIAL)	CY	18
402	6001	TRENCH EXCAVATION PROTECTION	LF	668
400	6003	STRUCT EXCAV (PIPE)	CY	3,650



STATE OF TEXAS

ROBERTO S. ROMERO

114517

PROFESSIONAL ENGINEER

02/16/2017

CAMINO REAL

REGIONAL MOBILITY AUTHORITY

TRE & ASSOCIATES

Engineering Solutions

110 Mesa Park Drive, Suite 200
El Paso, Texas 79912
Office: (915) 852-8093
Fax: (915) 825-8506

6101 W. Courtyard Dr., Bldg. 1, Ste. 100
Austin, Texas 78730
Office: (512) 358-0949
Fax: (512) 366-0374

STORM SEWER

PLAN & PROFILE

AND LATERAL

STA 52+50 TO STA 56+50

SCALE: 1"=10' V

SCALE: 1"=100' H

SHEET 3 OF 3

91-A1

2/16/2017 3:29:10 PM

BW*pdf.pltcfq

c:\pwworking\decom00\ap\ineda\0374422\VISTA-S-DR-SSPP-02.dgn

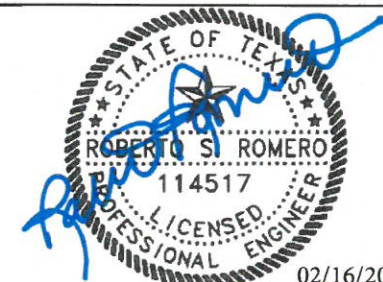
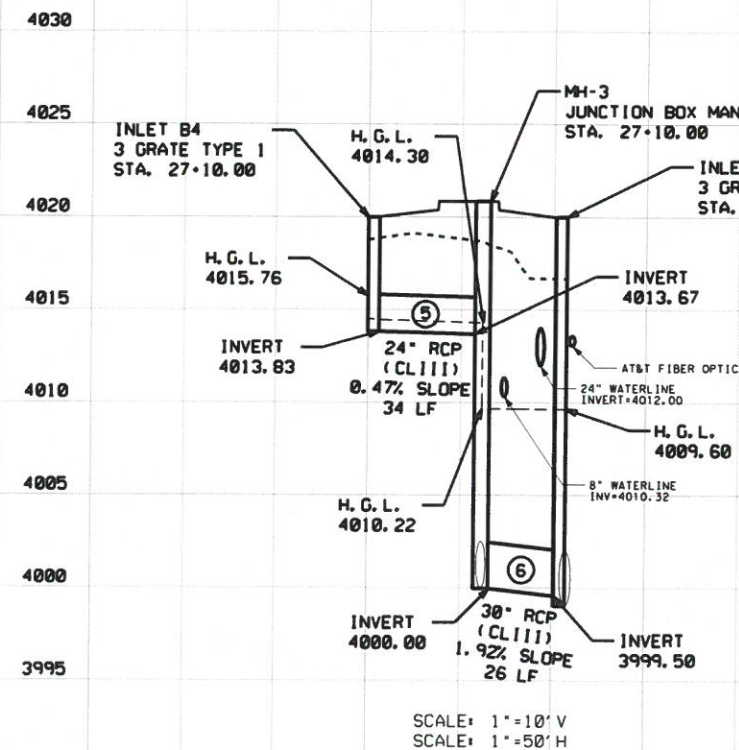
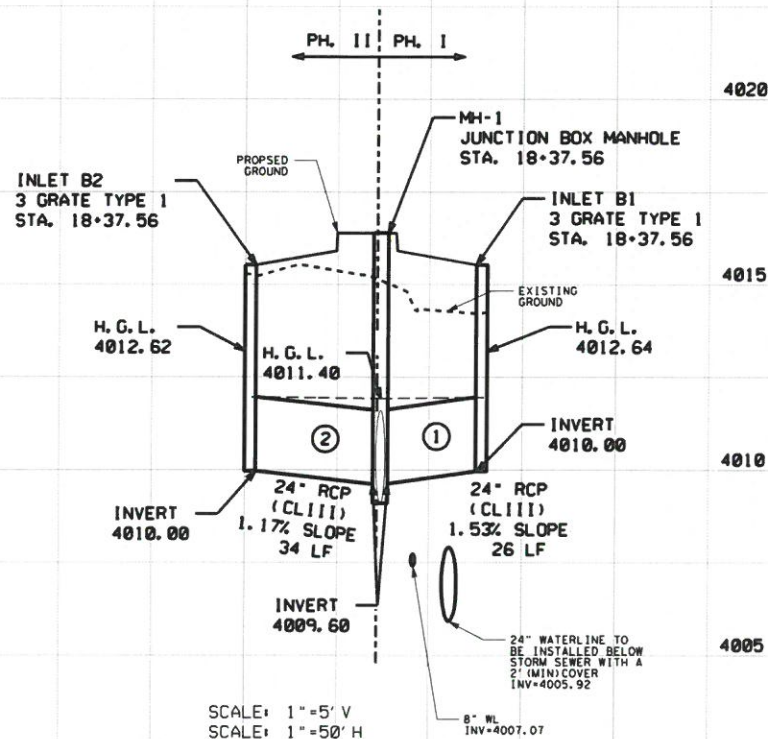
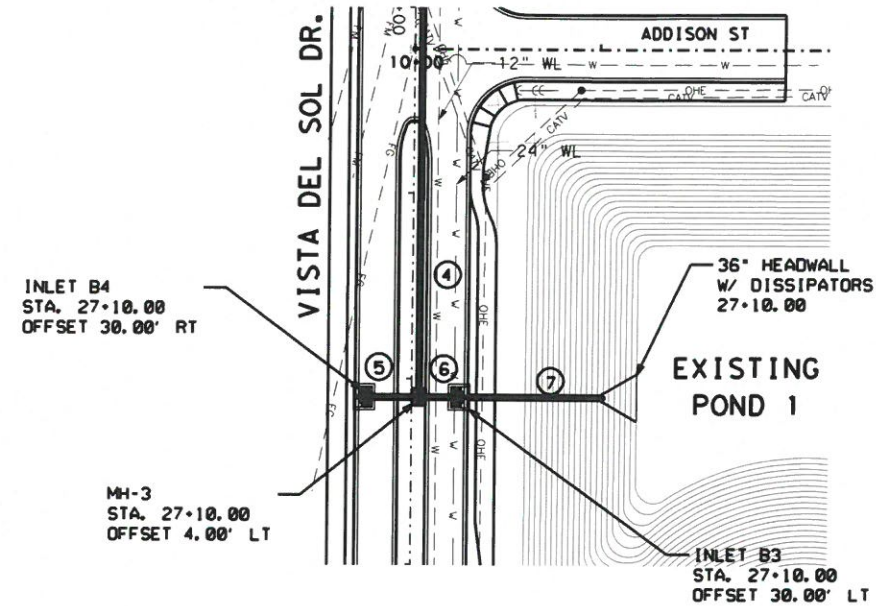
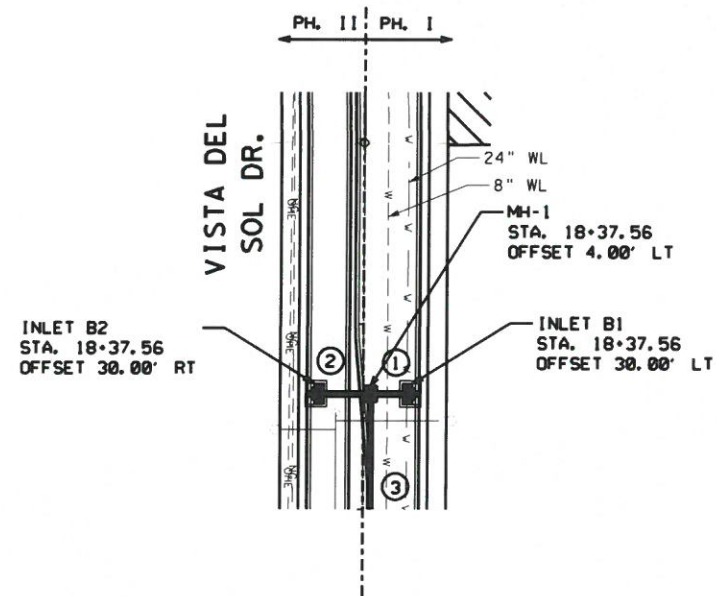
LEGEND

= H.G.L.

= GRATE INLETS

= STORM SEWER RCP

ESTIMATED QUANTITIES				
ITEM	CODE	DESCRIPTION	UNIT	QUANTITY
464	6005	RC PIPE (CL III) (24 IN)	LF	94
465	VDS06	3 GRATE TYPE I (INLET)	EA	3
402	6001	TRENCH EXCAVATION PROTECTION	LF	94
400	6003	STRUCT EXCAV (PIPE)	CY	90



CAMINO REAL

REGIONAL MOBILITY

AUTHORITY

TRE

ASSOCIATES

Engineering Solutions

110 Mesa Park Drive, Suite 200
El Paso, Texas 79912
Office: (915) 652-9993
Fax: (915) 629-6599

6101 W. Courtyard Dr., Bldg. 1, Ste. 100
Austin, Texas 78730
Office: (512) 358-4049
Fax: (512) 358-4374

STORM SEWER
PLAN & PROFILE
LATERALS
STA 16+00 TO STA 29+00

SCALE: 1"=100' H		SHEET 2 OF 3	
DSN:	STATE	HIGHWAY	NO.
CHK:	TEXAS	VISTA	DEL SOL
DRN:	COUNTY	SHEET	NO.
CHK:	EL PASO	190-A1	