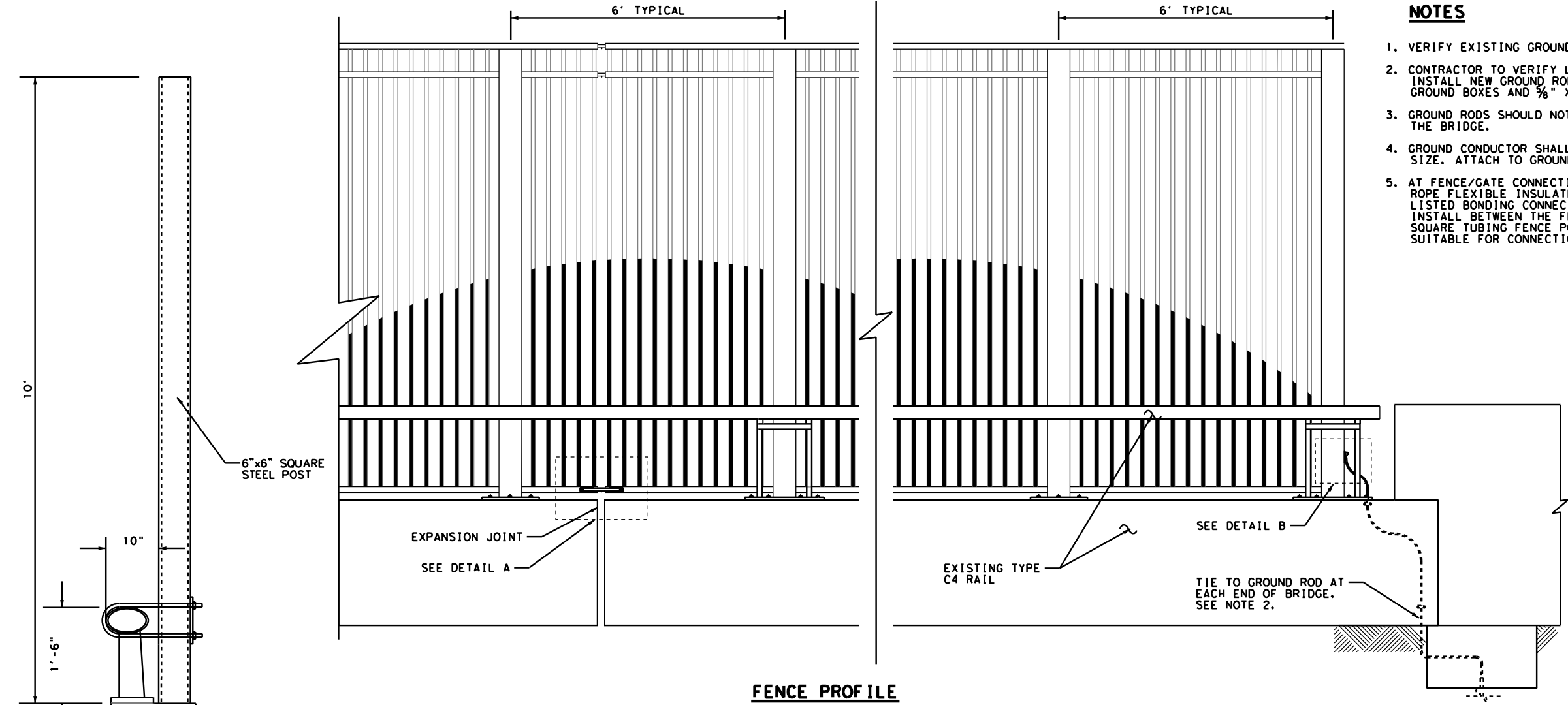


NOTES

1. VERIFY EXISTING GROUNDING INSTALLATION PRIOR TO CONSTRUCTION.
2. CONTRACTOR TO VERIFY LOCATIONS OF EXISTING GROUND RODS OR INSTALL NEW GROUND RODS PER TxDOT STANDARDS. USE TYPE A GROUND BOXES AND 3/8" X 8' VERTICAL GROUND RODS.
3. GROUND RODS SHOULD NOT BE PLACED WITHIN THE APPROACH SLAB OF THE BRIDGE.
4. GROUND CONDUCTOR SHALL BE AWG NO 2, THHW COPPER, MINIMUM SIZE. ATTACH TO GROUND ROD WITH LISTED BONDING CLAMP.
5. AT FENCE/GATE CONNECTIONS, PROVIDE A LISTED, BRAIDED, OR WIRE ROPE FLEXIBLE INSULATED GROUND CONNECTION, 12" LONG WITH LISTED BONDING CONNECTORS ON EACH END OF THE STRAP OR ROPE. INSTALL BETWEEN THE FENCE FRAME TUBING AND THE 4" STEEL SQUARE TUBING FENCE POSTS USING LISTED BONDING CONNECTOR SUITABLE FOR CONNECTION TO THE FRAME AND THE FENCE POST.

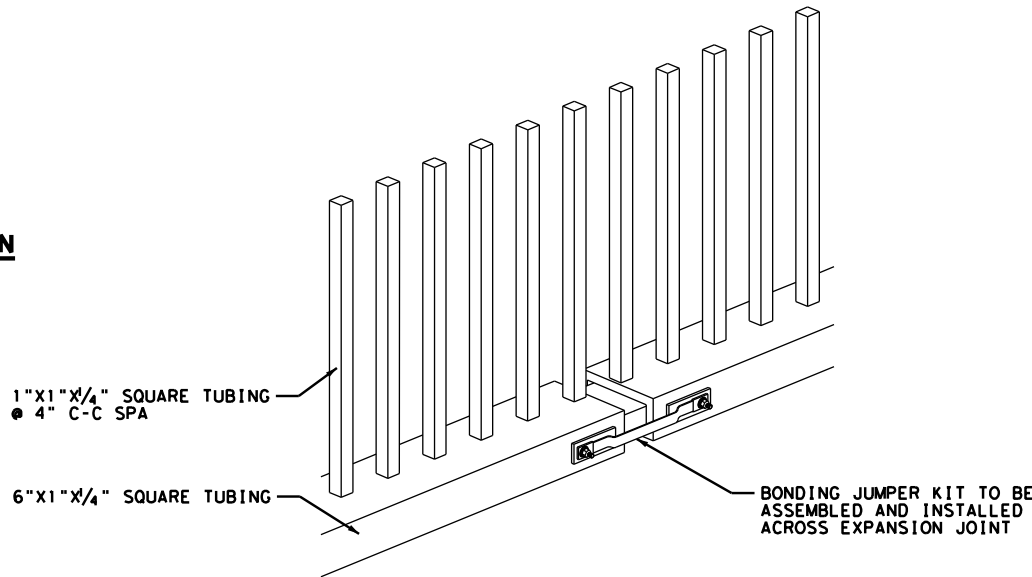


FENCE PROFILE

NTS

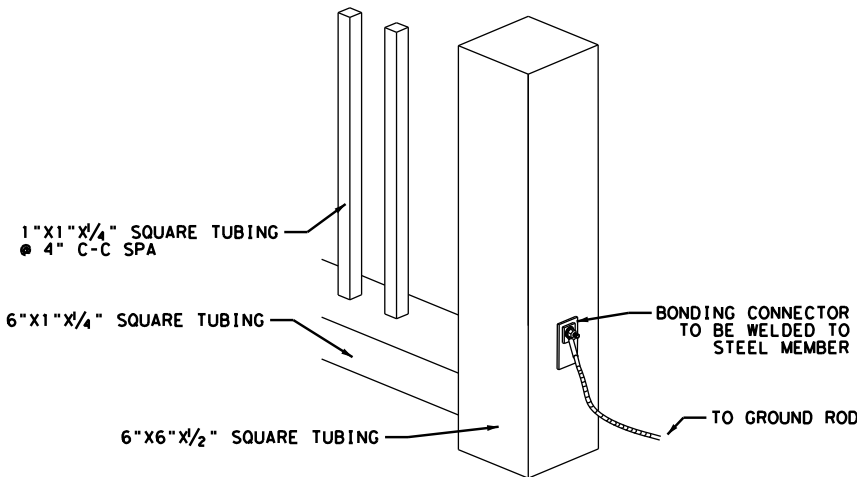
EXISTING TYPICAL SECTION

NTS



BONDING JUMPER AT EXPANSION JOINT - DETAIL A

NTS



BONDING JUMPER AT BRIDGE END - DETAIL B

NTS

NO	DATE	REVISION	APPROVED
1	7/31/15	ADDENDUM 4	
2			
3			
4			
5			



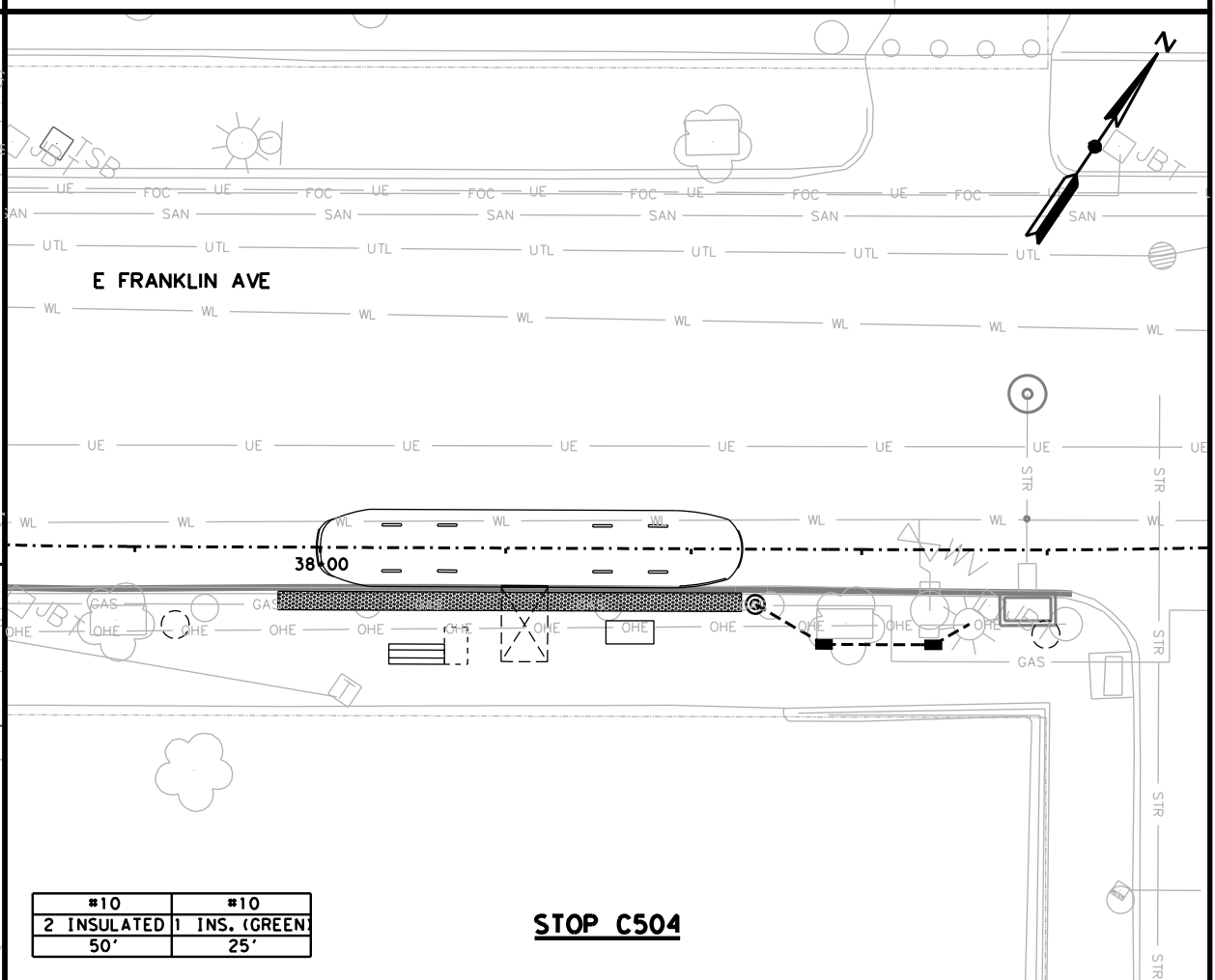
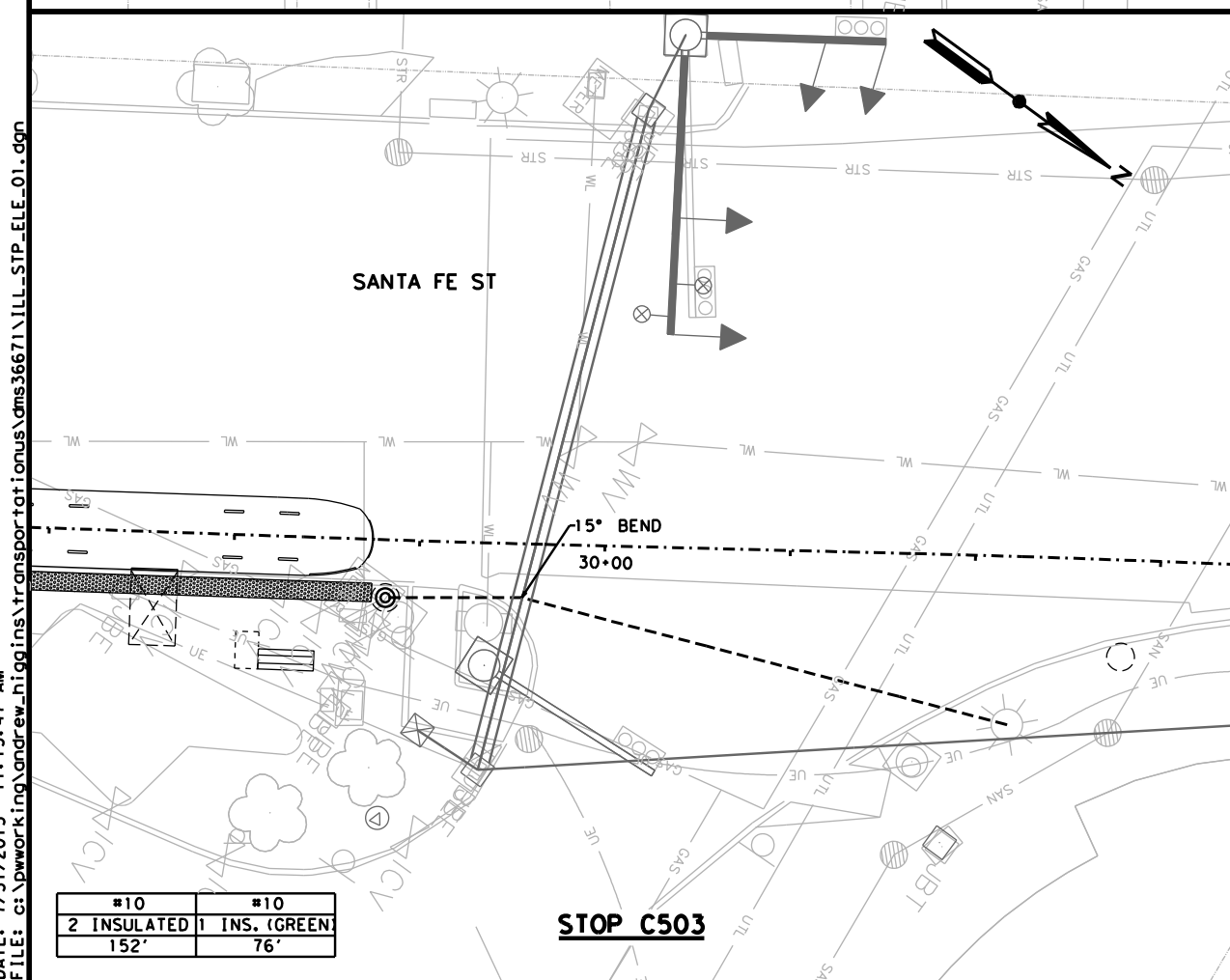
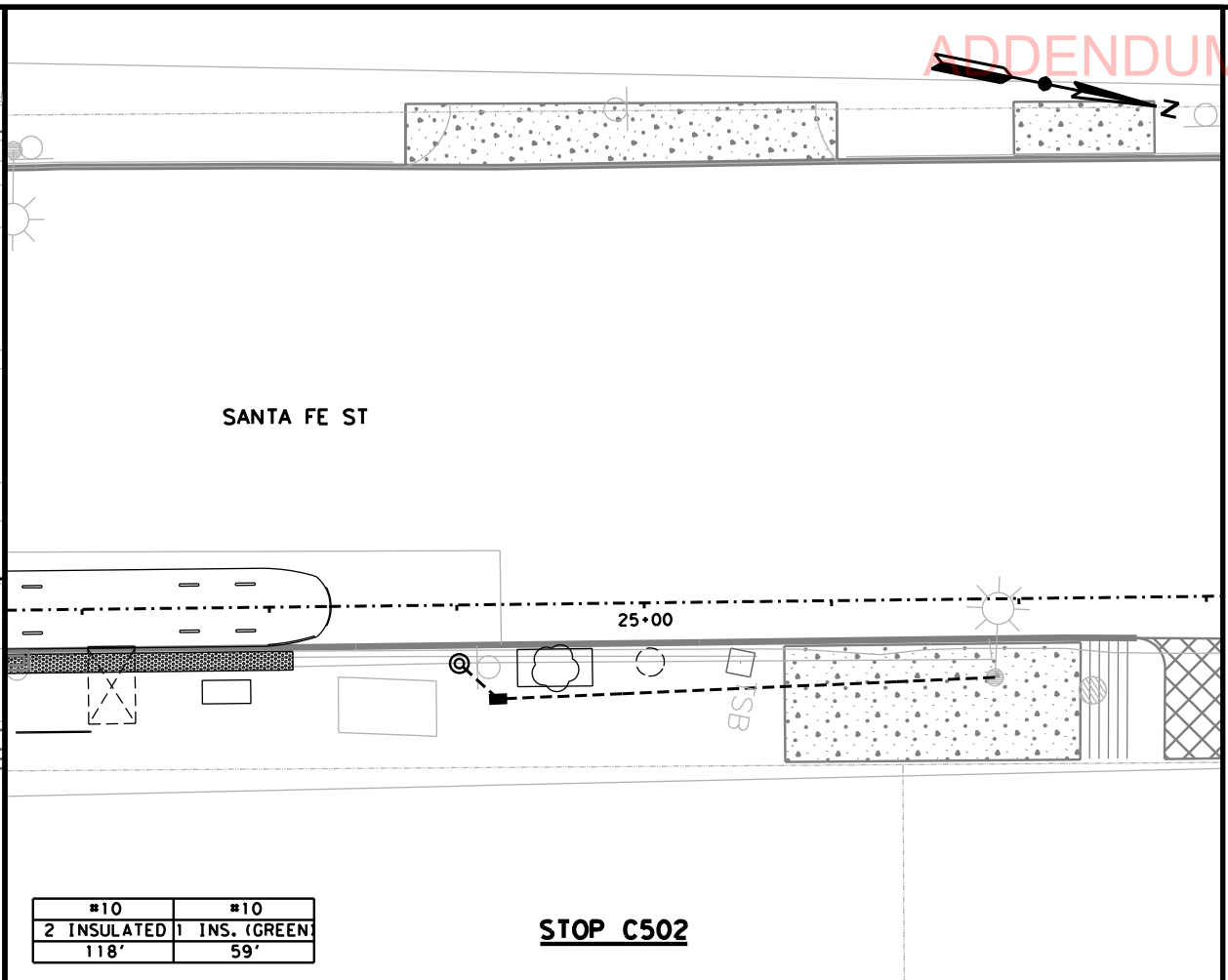
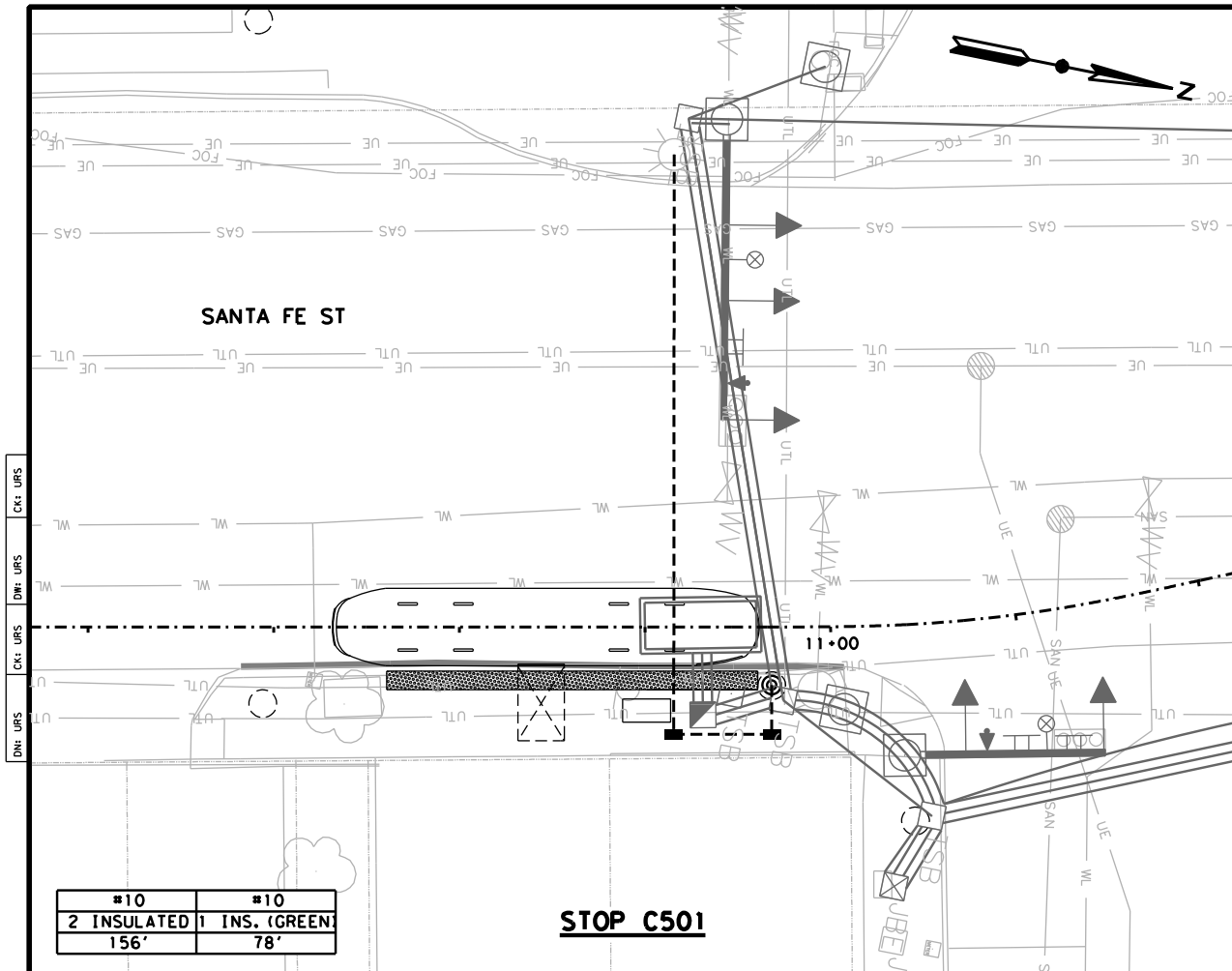
COEP STREETCAR
FENCE
GROUNDING
DETAIL



S200

CONT	SECT	JOB	HIGHWAY
0924	06	446	VARIOUS
DIST	COUNTY	SHEET NO.	
EL PASO	EL PASO	694	

DATE: 7/31/2015 11:15:47 AM
FILE: c:\pwworking\andrew_niggins\transportation\cns36671\ILL_STP_ELE_01.dgn

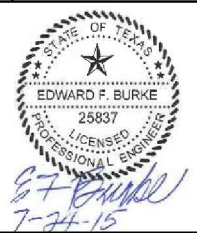


ADDENDUM 4 - JULY 31, 2015
0' 10' 20'
SCALE IN FEET

- NOTES:**
1. CONTRACTOR MAY DEVIATE FROM THE CONDUIT LAYOUT PLAN BASED ON EXISTING FIELD CONDITIONS INCLUDING USE OF JUNCTION BOXES AT BENDS.
 2. LOCATION OF POWER SOURCES IS APPROXIMATE. CONTRACTOR TO FIELD VERIFY ALL POWER SOURCES PRIOR TO CONSTRUCTION.
 3. SEE STREET RECONSTRUCTION PLANS, STOP PLANS, AND TRAFFIC SIGNAL PLANS FOR MORE INFORMATION.

LEGEND	
	EXISTING ROW LINE
	STREETCAR ALIGNMENT
	2" ELECTRIC CONDUIT
	2" ELECTRIC CONDUIT BORING
	CONCRETE SIDEWALK
	DETECTABLE WARNING
	OCS POLE
	PROPOSED STREETCAR STOP LIGHT
	PROPOSED JUNCTION BOX
	PROPOSED JUNCTION BOX FROM EXISTING LIGHT

NO	DATE	REVISION	APPROVED

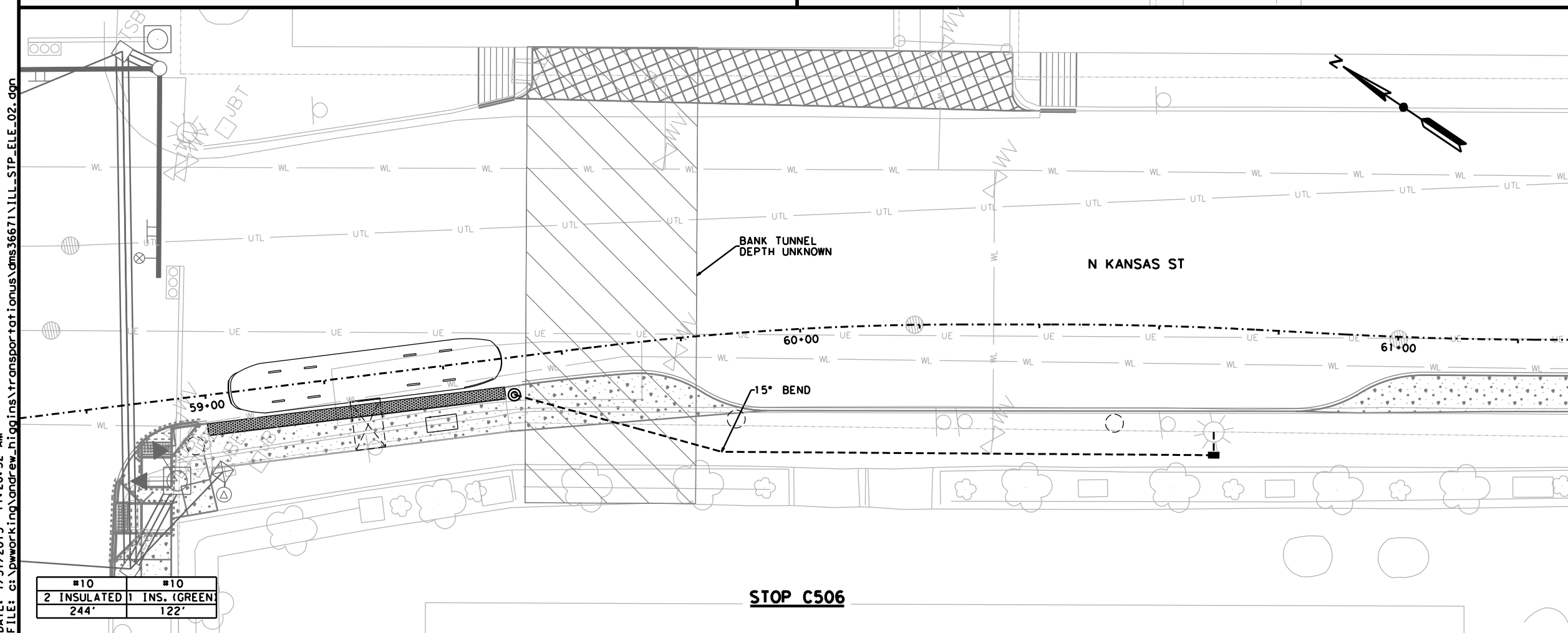
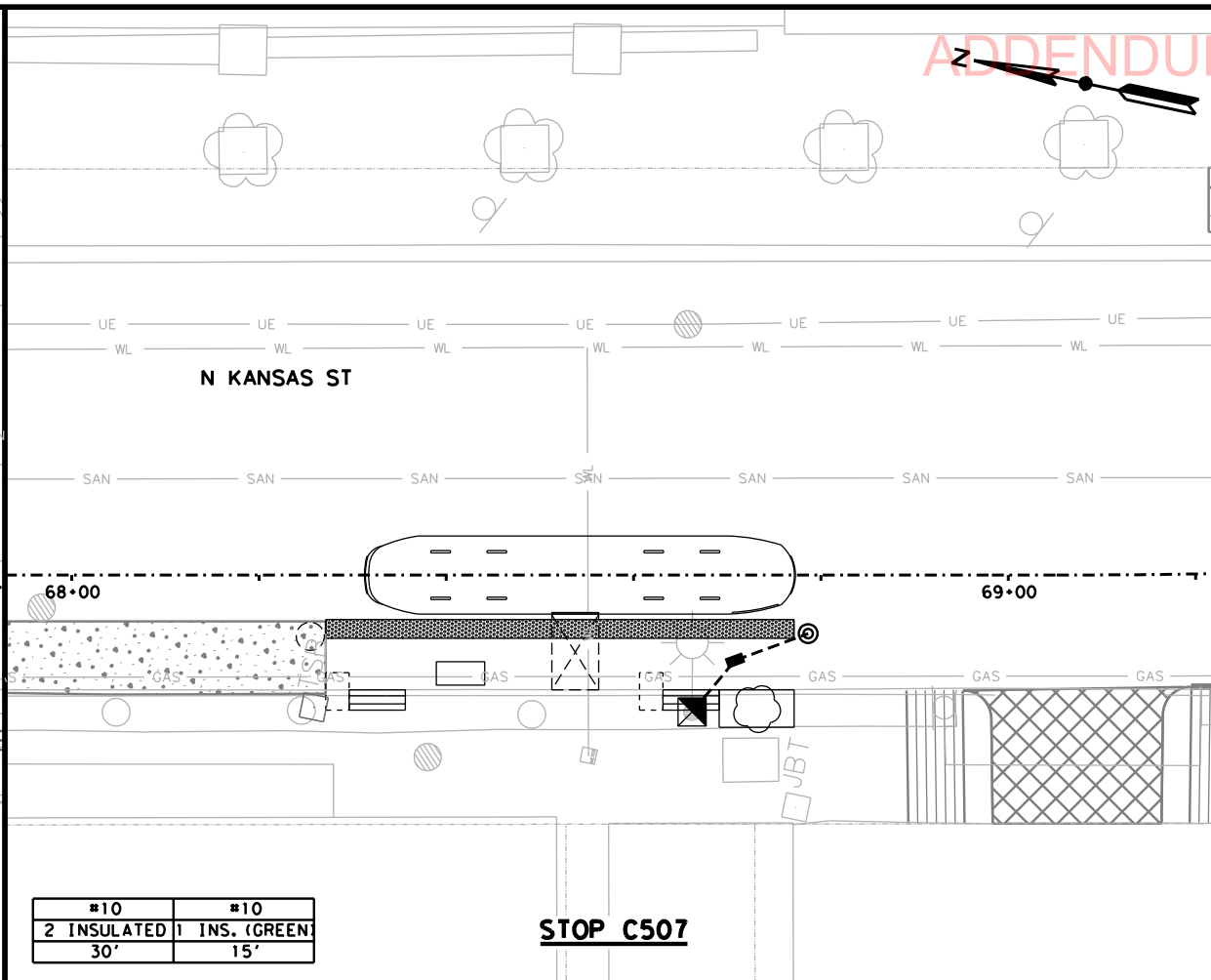
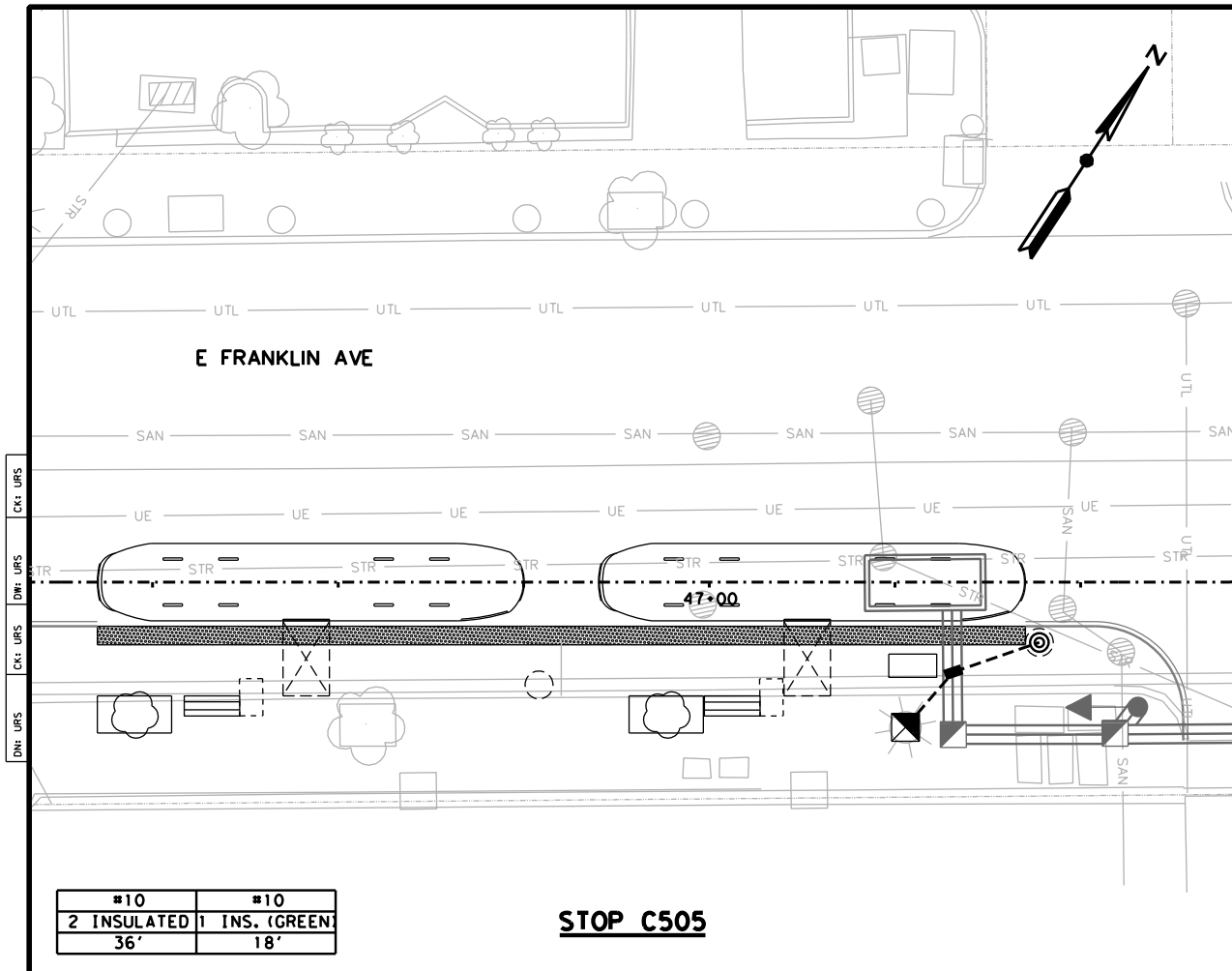


URS 2829 Montana Suite 206
El Paso, Texas 79903
(915) 493-6468
TBPE REGISTRATION NO. F-3162

**COEP STREETCAR
ELECTRIC
CONDUIT
RUNS**

SHEET NO. N100			
CONT	SECT	JOB	HIGHWAY
0924	06	446	VARIOUS
DIST	COUNTY	SHEET NO.	
EL PASO	EL PASO	696	

DATE: 7/31/2015 11:20:32 AM
FILE: c:\pwworking\andrew_niggins\transportation\cns36671\ILL_STP_ELE_02.dgn



ADDENDUM 4 - JULY 31, 2015
0' 10' 20'
SCALE IN FEET

- NOTES:
1. CONTRACTOR MAY DEViate FROM THE CONDUIT LAYOUT PLAN BASED ON EXISTING FIELD CONDITIONS INCLUDING USE OF JUNCTION BOXES AT BENDS.
 2. LOCATION OF POWER SOURCES IS APPROXIMATE. CONTRACTOR TO FIELD VERIFY ALL POWER SOURCES PRIOR TO CONSTRUCTION.
 3. SEE STREET RECONSTRUCTION PLANS, STOP PLANS, AND TRAFFIC SIGNAL PLANS FOR MORE INFORMATION.

LEGEND

- EXISTING ROW LINE
- STREETCAR ALIGNMENT
- 2" ELECTRIC CONDUIT
- 2" ELECTRIC CONDUIT BORING
- CONCRETE SIDEWALK
- DETECTABLE WARNING
- OCS POLE
- PROPOSED STREETCAR STOP LIGHT
- PROPOSED JUNCTION BOX
- PROPOSED JUNCTION BOX FROM EXISTING LIGHT

NO	DATE	REVISION	APPROVED

EDWARD F. BURKE
25837
LICENSED PROFESSIONAL ENGINEER
7-24-15

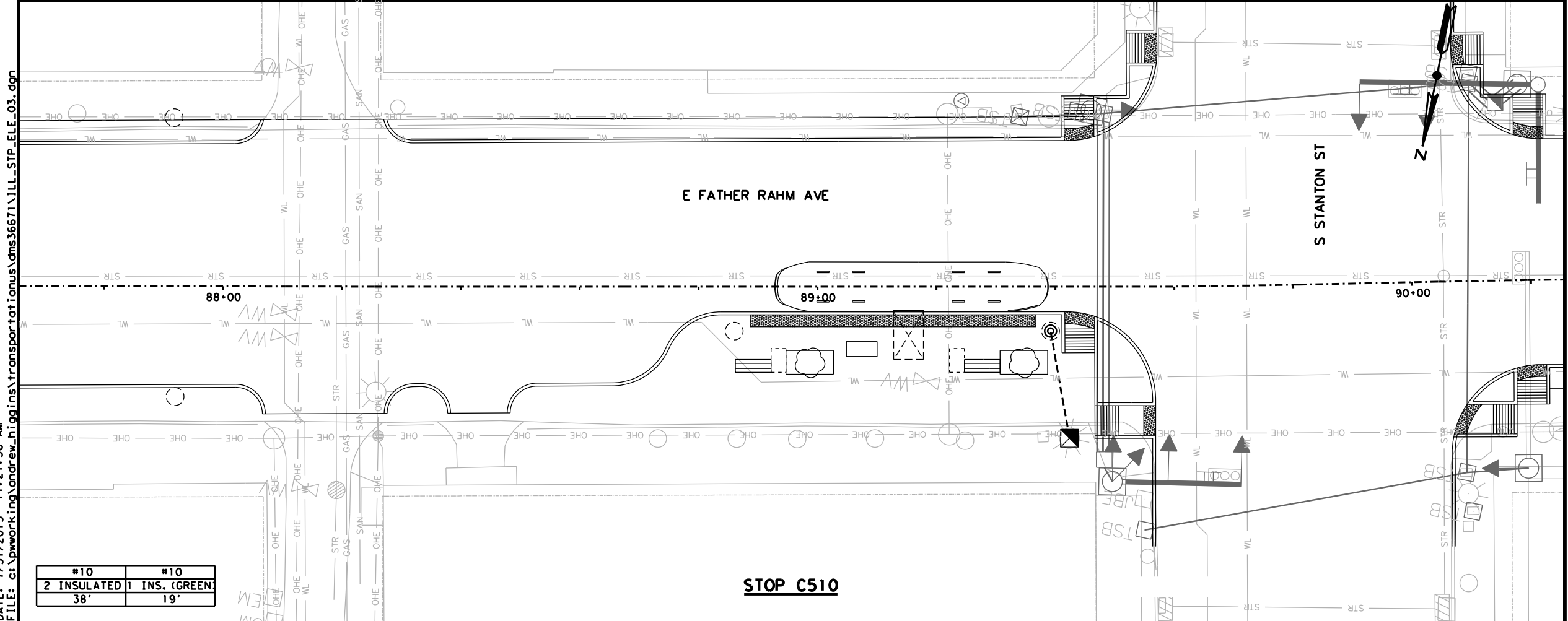
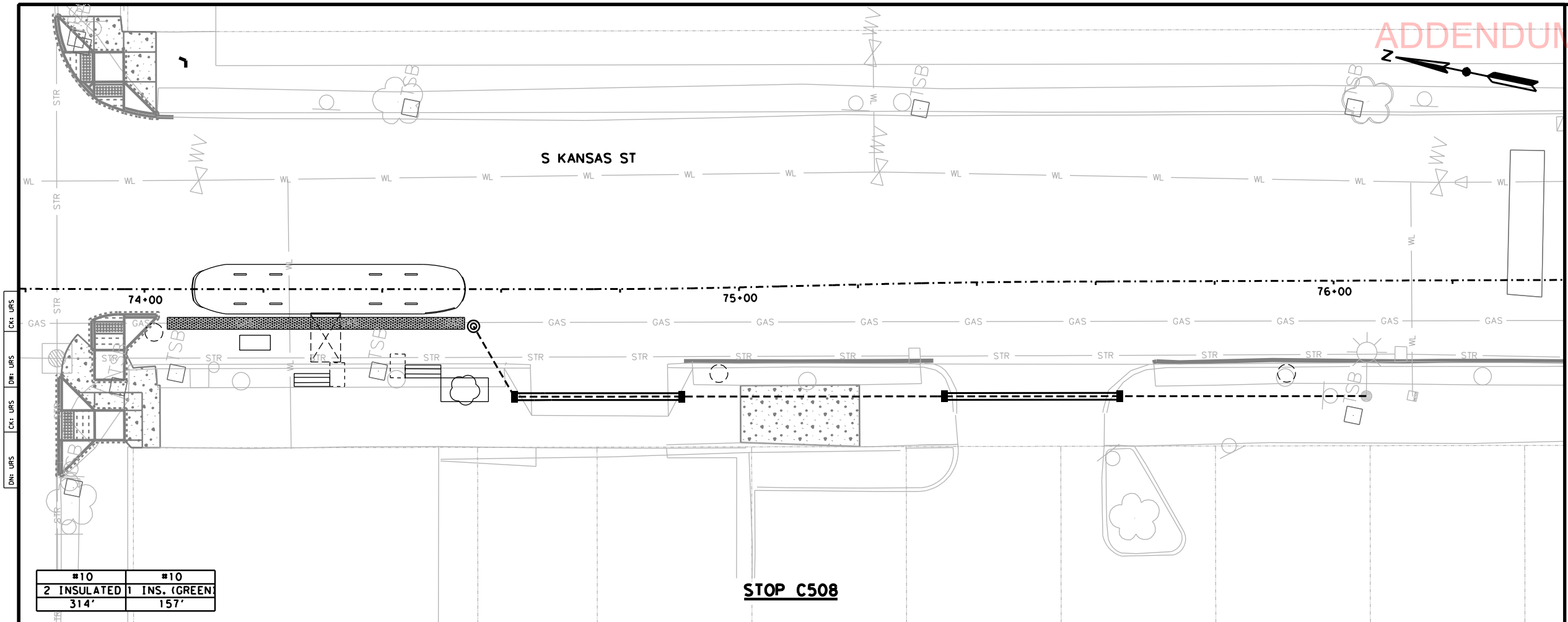
URS 2829 Montana Suite 206
El Paso, Texas 79903
(915) 493-6468
TBPE REGISTRATION NO. F-3162

**COEP STREETCAR
ELECTRIC
CONDUIT
RUNS**

N101

CONT	SECT	JOB	HIGHWAY
0924	06	446	VARIOUS
DIST	COUNTY	SHEET NO.	
EL PASO	EL PASO	697	

DATE: 7/31/2015 11:27:56 AM
FILE: c:\pwworking\andrew_higgins\transportation\ms36671\ILL_STP_ELE_03.dgn



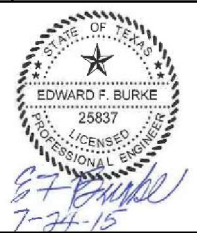
ADDENDUM 4 - JULY 31, 2015
0' 10' 20'
SCALE IN FEET

- NOTES:
1. CONTRACTOR MAY DEVIATE FROM THE CONDUIT LAYOUT PLAN BASED ON EXISTING FIELD CONDITIONS INCLUDING USE OF JUNCTION BOXES AT BENDS.
 2. LOCATION OF POWER SOURCES IS APPROXIMATE. CONTRACTOR TO FIELD VERIFY ALL POWER SOURCES PRIOR TO CONSTRUCTION.
 3. SEE STREET RECONSTRUCTION PLANS, STOP PLANS, AND TRAFFIC SIGNAL PLANS FOR MORE INFORMATION.

LEGEND

- EXISTING ROW LINE
- STREETCAR ALIGNMENT
- 2" ELECTRIC CONDUIT
- 2" ELECTRIC CONDUIT BORING
- CONCRETE SIDEWALK
- DETECTABLE WARNING
- OCS POLE
- PROPOSED STREETCAR STOP LIGHT
- PROPOSED JUNCTION BOX
- PROPOSED JUNCTION BOX FROM EXISTING LIGHT

NO	DATE	REVISION	APPROVED

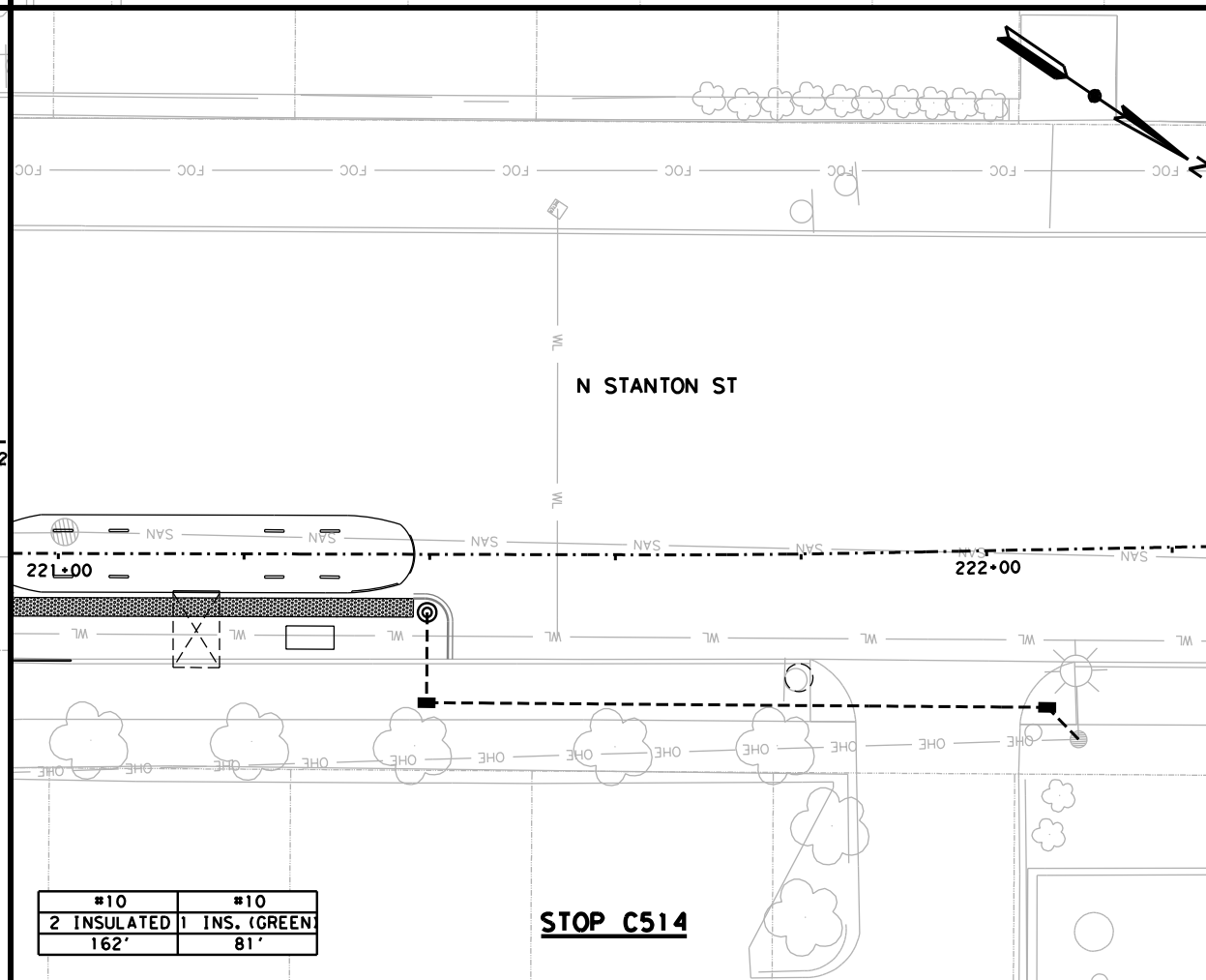
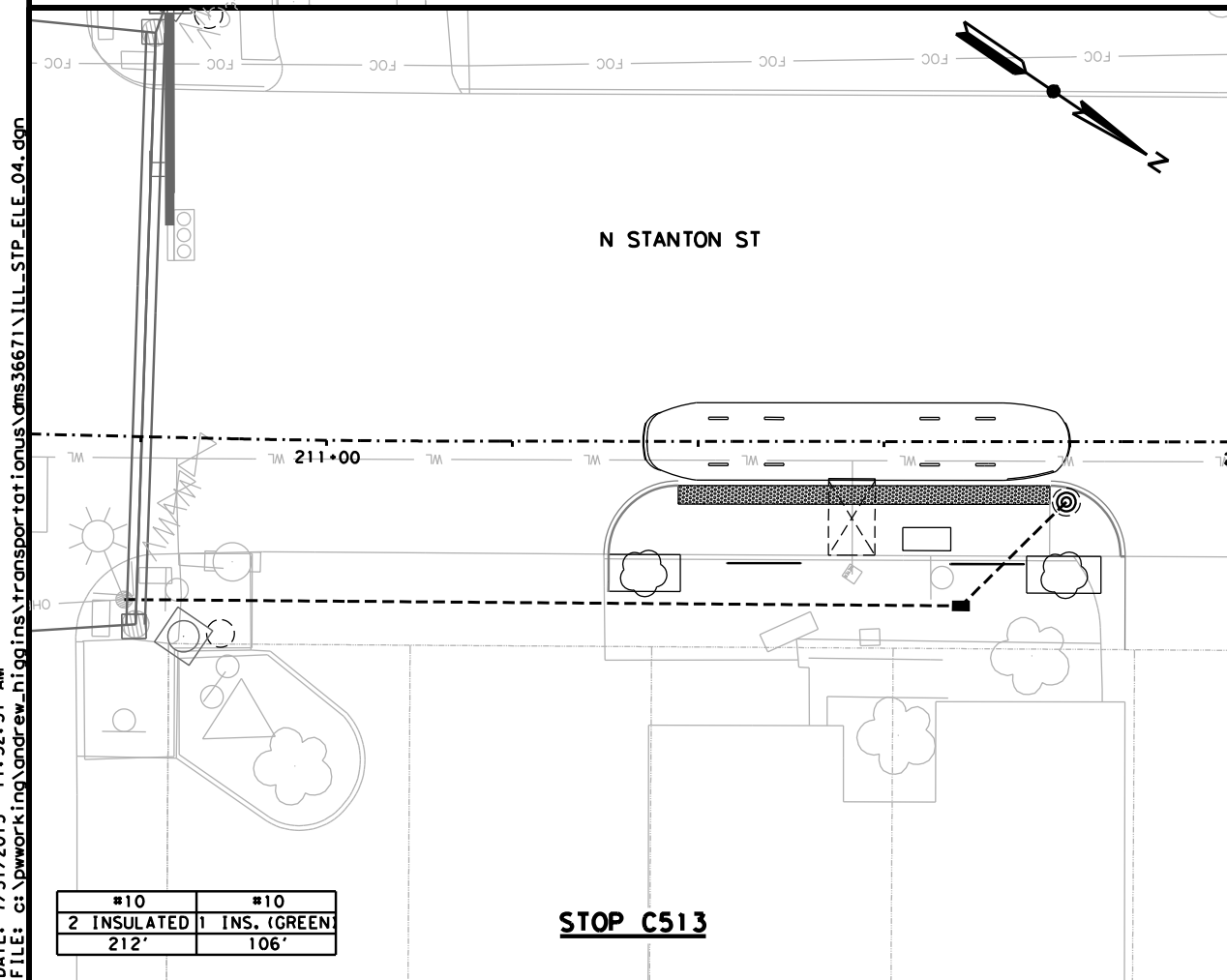
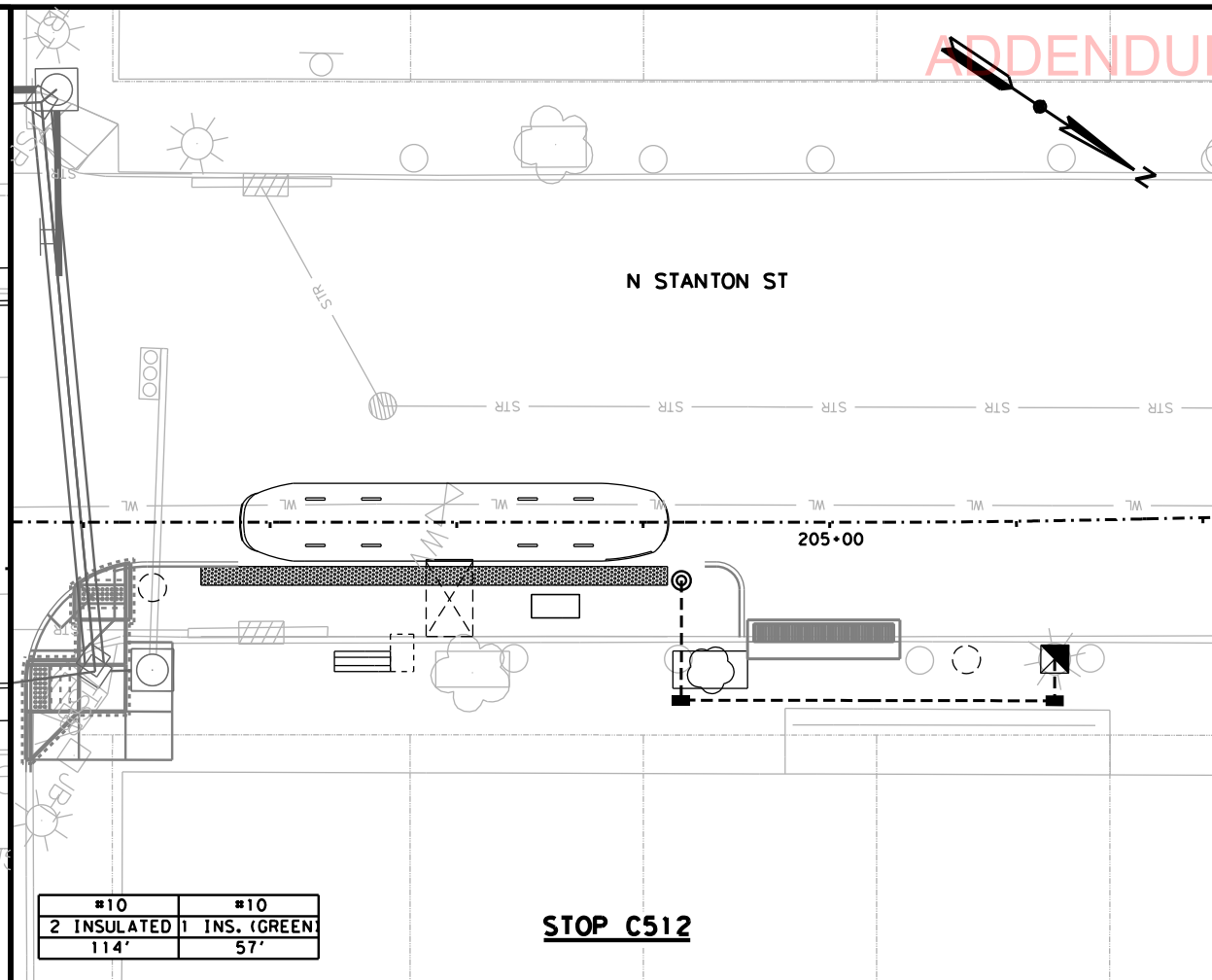
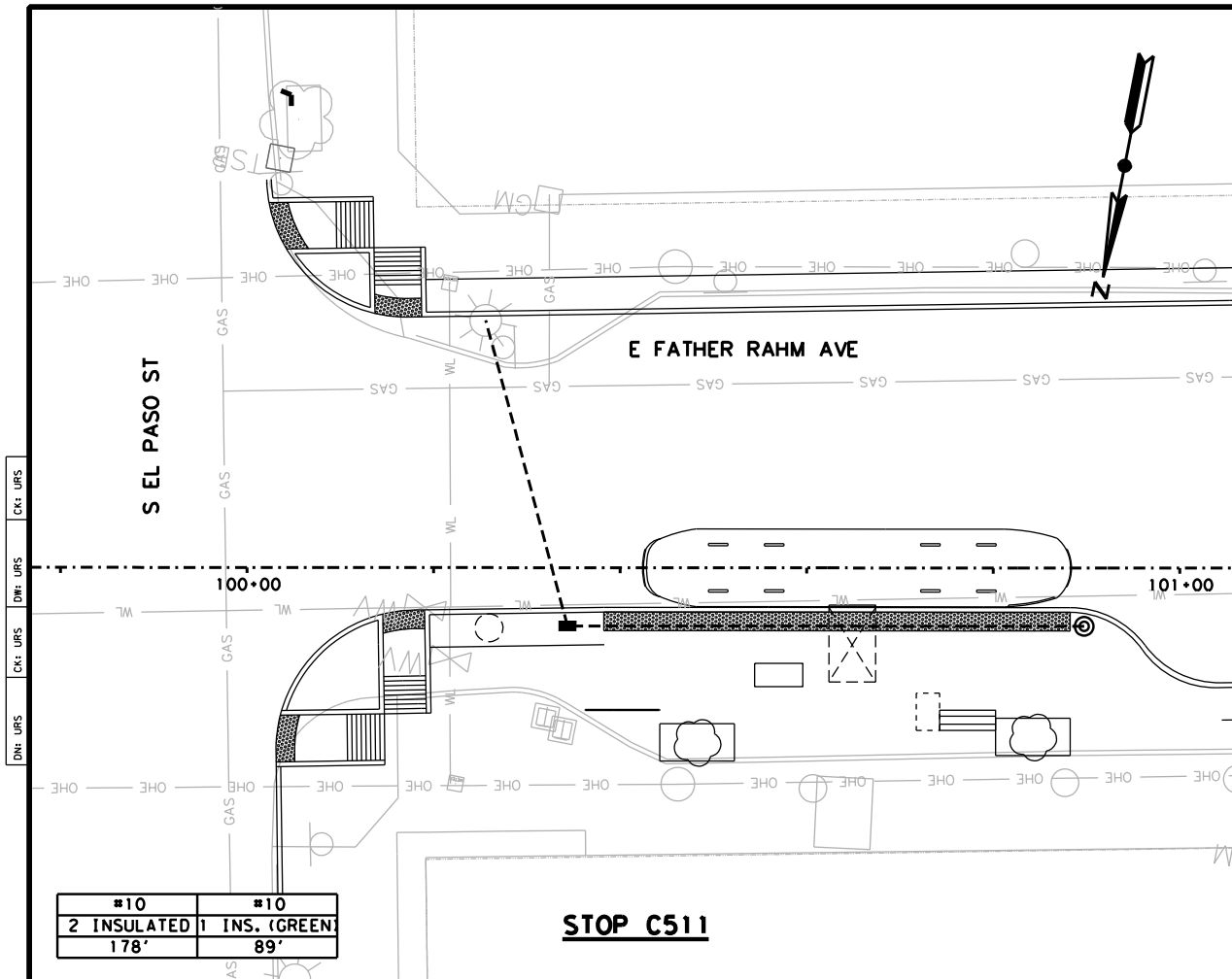


URS 2829 Montana Suite 206
El Paso, Texas 79903
(915) 493-6468
TBPE REGISTRATION NO. F-3162

**COEP STREETCAR
ELECTRIC
CONDUIT
RUNS**

N102			
CONT	SECT	JOB	HIGHWAY
0924	06	446	VARIOUS
DIST	COUNTY	SHEET NO.	
EL PASO	EL PASO	698	

DATE: 7/31/2015 11:32:31 AM
FILE: c:\pwworking\andrew_niggins\transportation\cns36671\ILL_STP_ELE_04.dgn



ADDENDUM 4 - JULY 31, 2015
0' 10' 20'
SCALE IN FEET

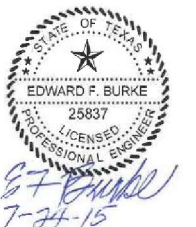
NOTES:

1. CONTRACTOR MAY DEVIATE FROM THE CONDUIT LAYOUT PLAN BASED ON EXISTING FIELD CONDITIONS INCLUDING USE OF JUNCTION BOXES AT BENDS.
2. LOCATION OF POWER SOURCES IS APPROXIMATE. CONTRACTOR TO FIELD VERIFY ALL POWER SOURCES PRIOR TO CONSTRUCTION.
3. SEE STREET RECONSTRUCTION PLANS, STOP PLANS, AND TRAFFIC SIGNAL PLANS FOR MORE INFORMATION.

LEGEND

- EXISTING ROW LINE
- STREETCAR ALIGNMENT
- 2" ELECTRIC CONDUIT
- 2" ELECTRIC CONDUIT BORING
- CONCRETE SIDEWALK
- DETECTABLE WARNING
- OCS POLE
- PROPOSED STREETCAR STOP LIGHT
- PROPOSED JUNCTION BOX
- PROPOSED JUNCTION BOX FROM EXISTING LIGHT

NO	DATE	REVISION	APPROVED



URS 2829 Montana Suite 206
El Paso, Texas 79903
(915) 493-6468
TBPE REGISTRATION NO. F-3162

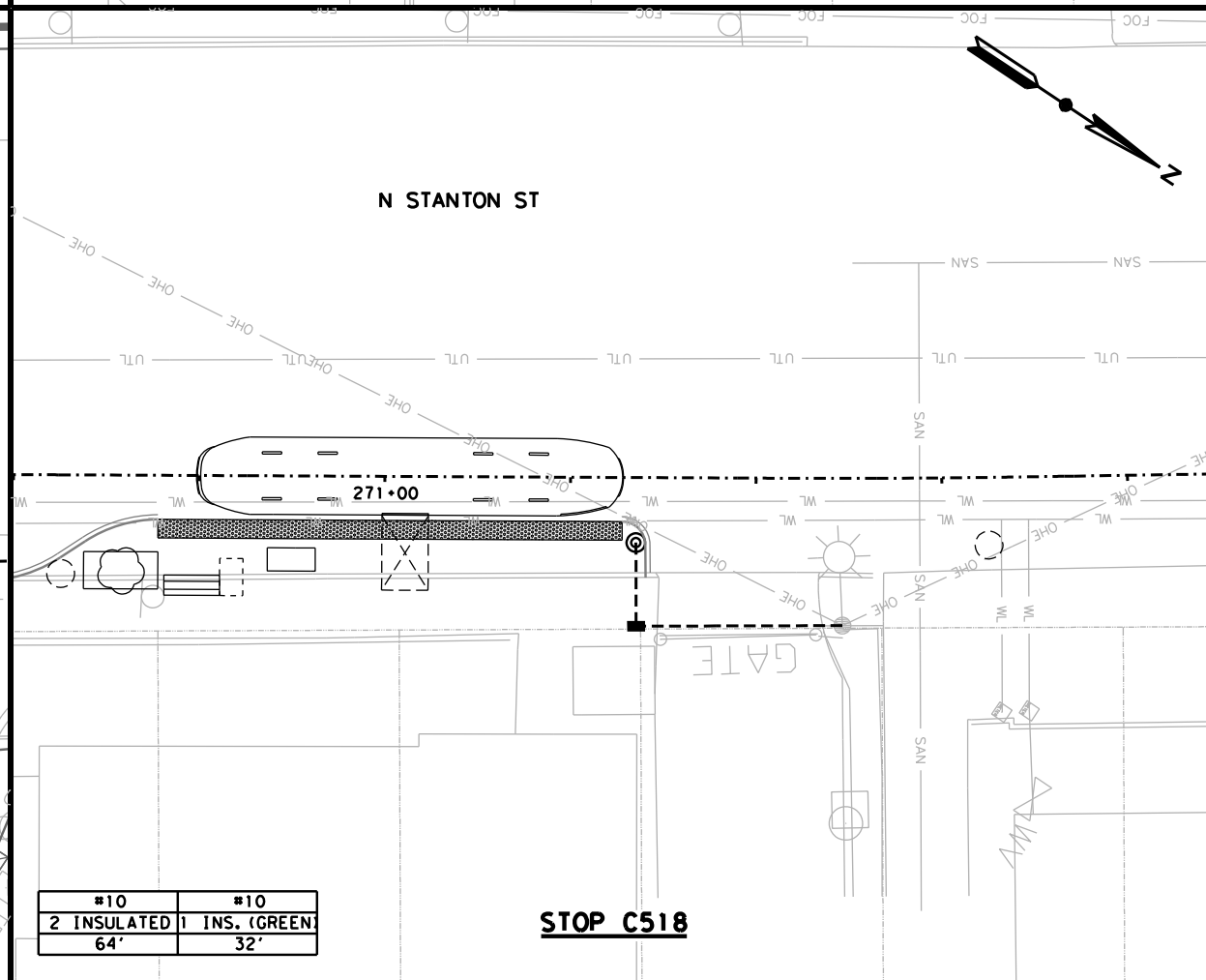
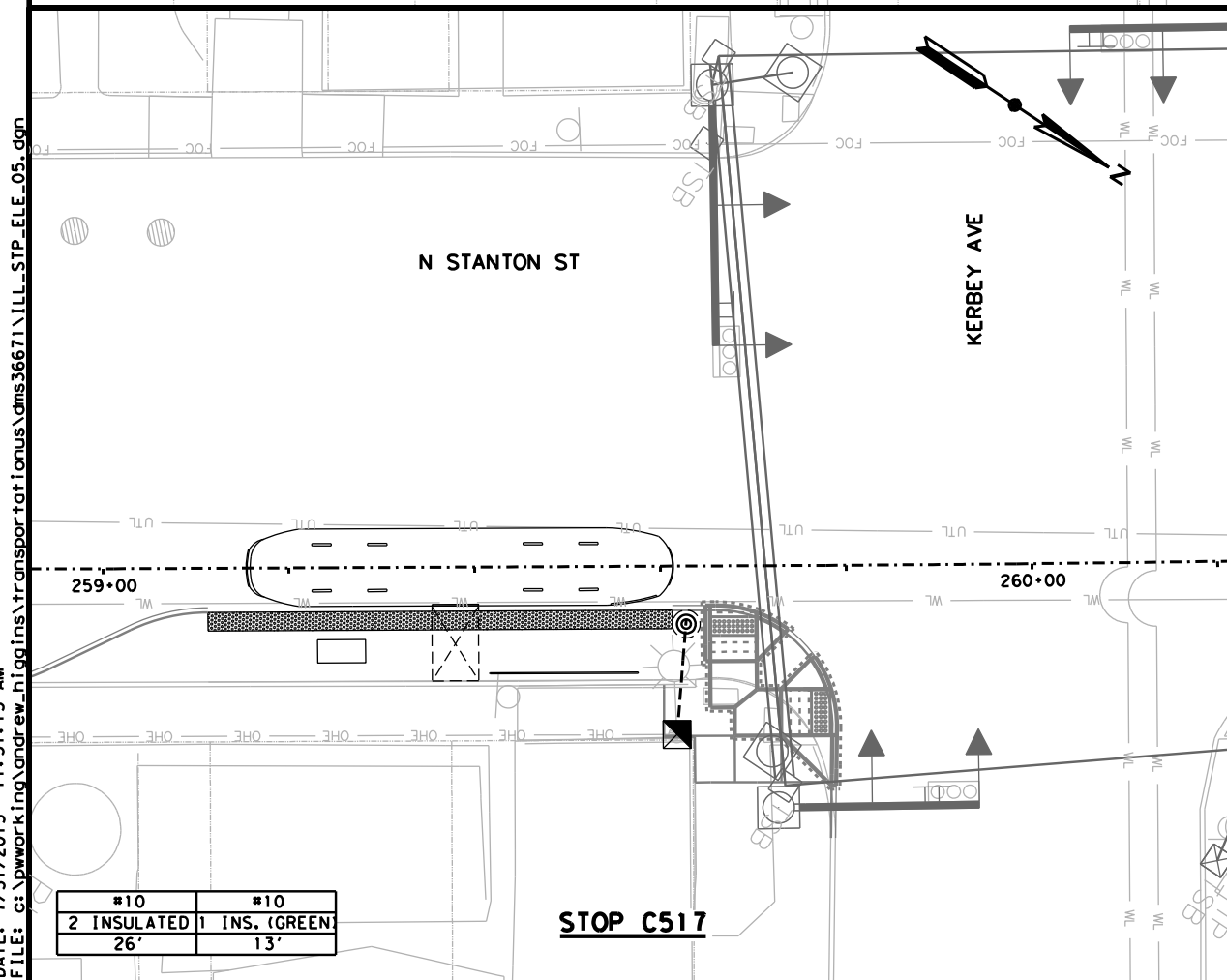
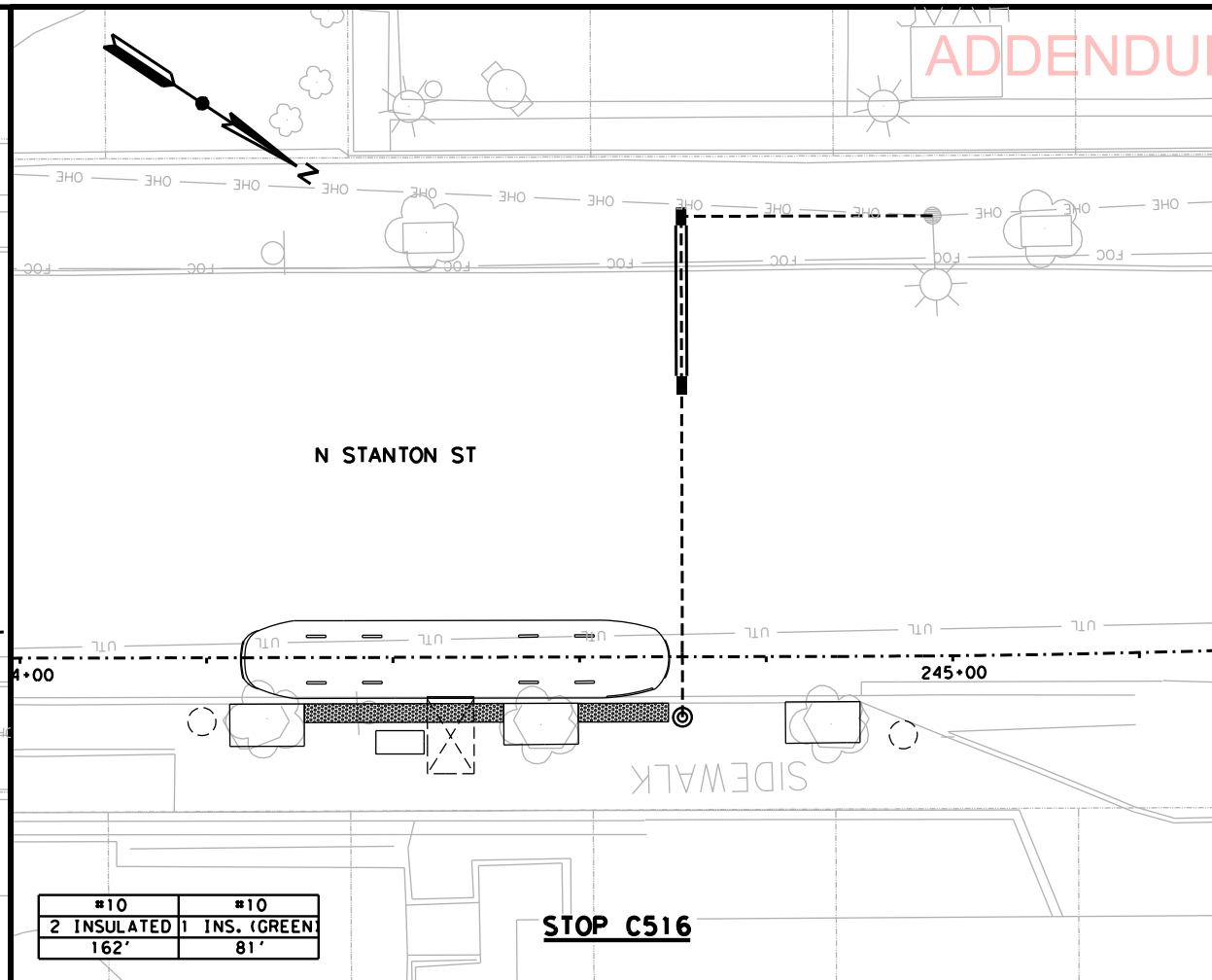
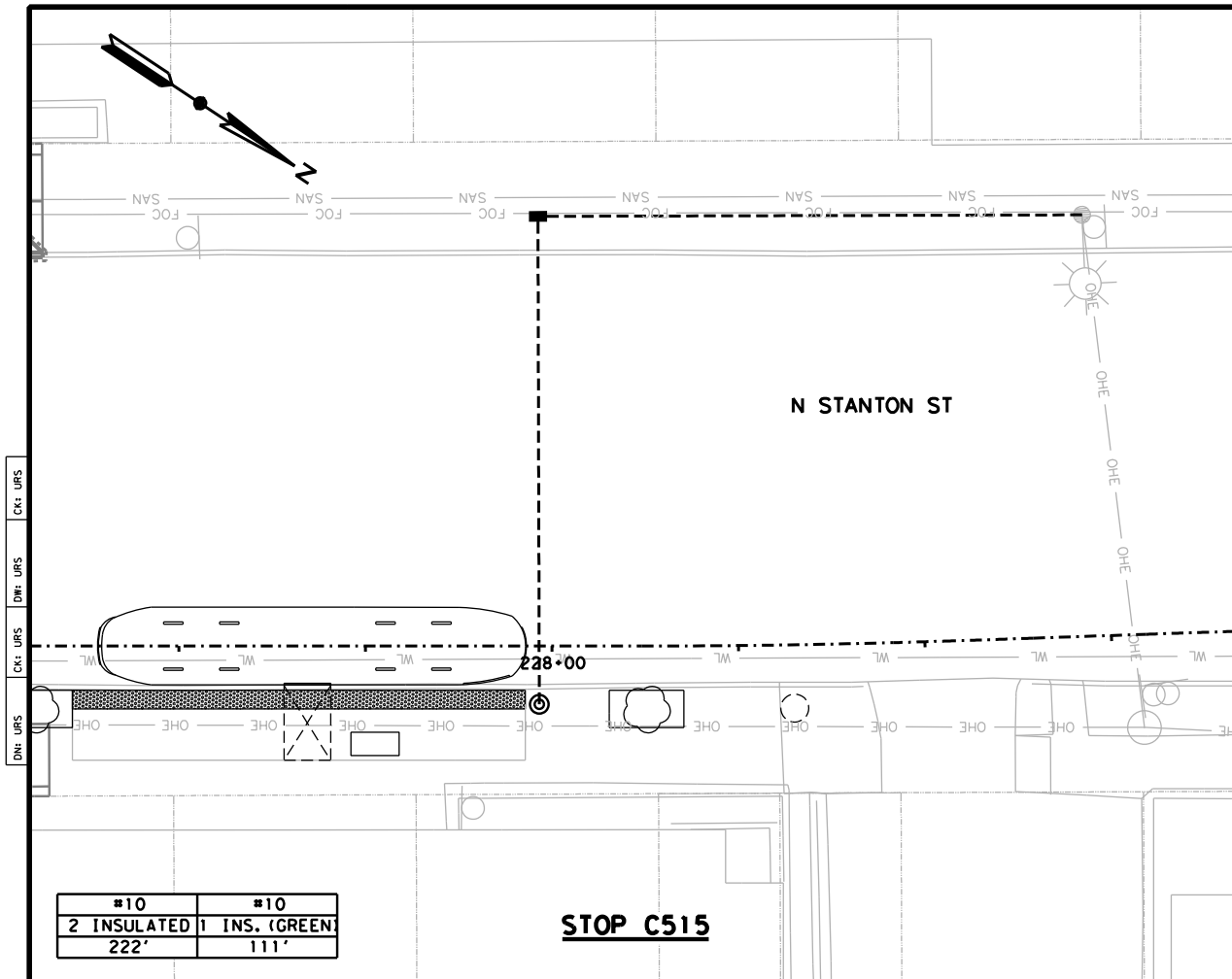
**COEP STREETCAR
ELECTRIC
CONDUIT
RUNS**



N103

CONT	SECT	JOB	HIGHWAY
0924	06	446	VARIOUS
DIST	COUNTY	SHEET NO.	
EL PASO	EL PASO	699	

DATE: 7/31/2015 11:37:15 AM
FILE: c:\pwworking\andrew_niggin\transportation\cns36671\ILL_STP_ELE_05.dgn



ADDENDUM 4 - JULY 31, 2015
0' 10' 20'
SCALE IN FEET

NOTES:

1. CONTRACTOR MAY DEVIATE FROM THE CONDUIT LAYOUT PLAN BASED ON EXISTING FIELD CONDITIONS INCLUDING USE OF JUNCTION BOXES AT BENDS.
2. LOCATION OF POWER SOURCES IS APPROXIMATE. CONTRACTOR TO FIELD VERIFY ALL POWER SOURCES PRIOR TO CONSTRUCTION.
3. SEE STREET RECONSTRUCTION PLANS, STOP PLANS, AND TRAFFIC SIGNAL PLANS FOR MORE INFORMATION.

LEGEND

	EXISTING ROW LINE
	STREETCAR ALIGNMENT
	2" ELECTRIC CONDUIT
	2" ELECTRIC CONDUIT BORING
	CONCRETE SIDEWALK
	DETECTABLE WARNING
	OCS POLE
	PROPOSED STREETCAR STOP LIGHT
	PROPOSED JUNCTION BOX
	PROPOSED JUNCTION BOX FROM EXISTING LIGHT

NO	DATE	REVISION	APPROVED
1	7/31/15		



URS 2829 Montana Suite 206
El Paso, Texas 79903
(915) 493-6468
TBPE REGISTRATION NO. F-3162

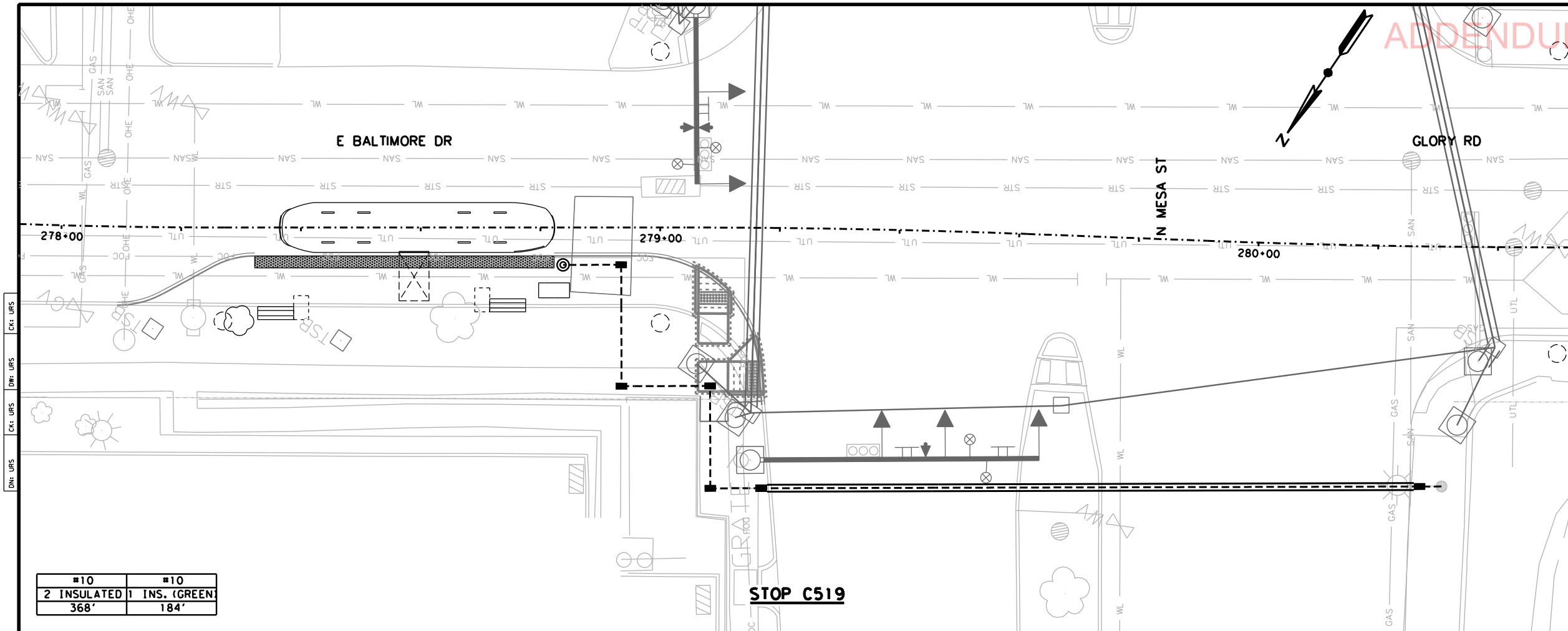
**COEP STREETCAR
ELECTRIC
CONDUIT
RUNS**



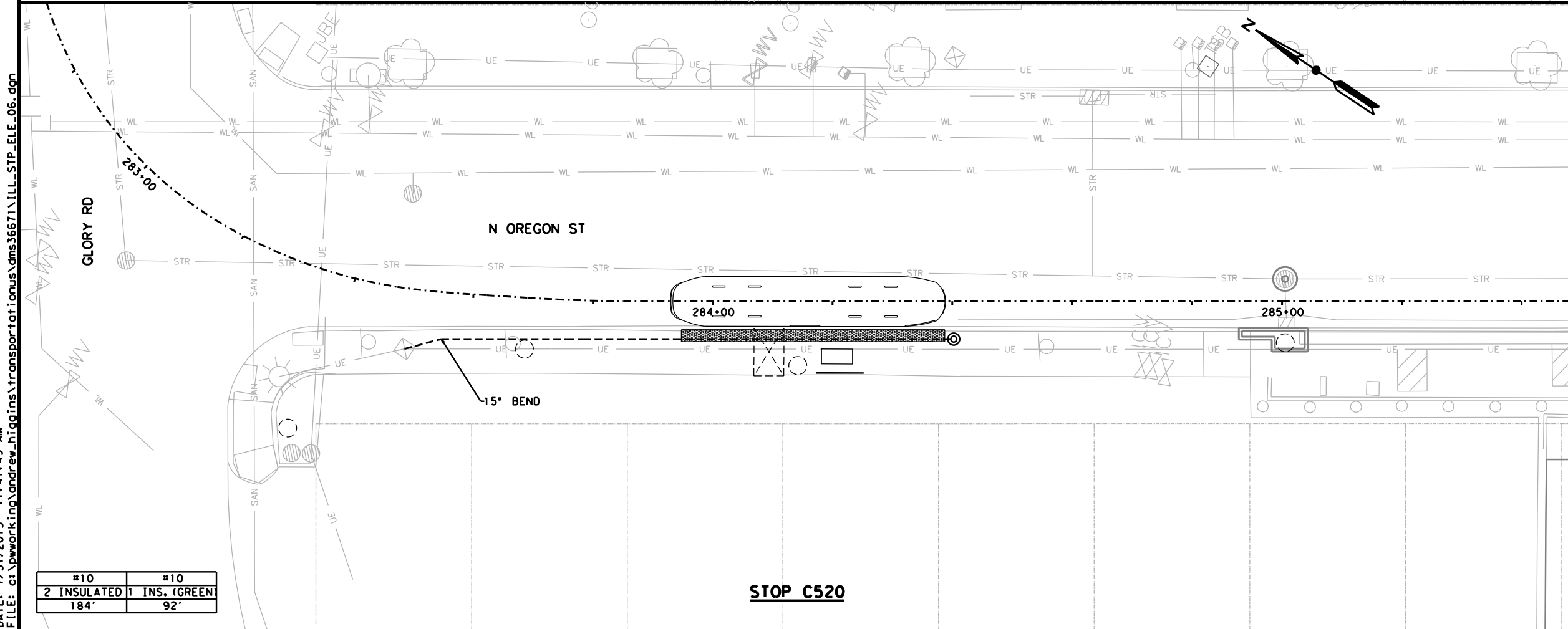
N104

CONT	SECT	JOB	HIGHWAY
0924	06	446	VARIOUS
DIST	COUNTY	SHEET NO.	
EL PASO	EL PASO	700	

DATE: 7/31/2015 11:41:49 AM
FILE: c:\pwworking\andrew_higgins\transportation\ms36671\ILL_STP_ELE_06.dgn



#10	#10
2 INSULATED	1 INS. (GREEN)
368'	184'



#10	#10
2 INSULATED	1 INS. (GREEN)
184'	92'

ADDENDUM 4 - JULY 31, 2015
0' 10' 20'
SCALE IN FEET

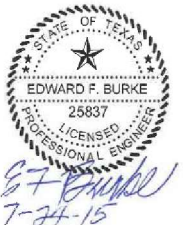
NOTES:

1. CONTRACTOR MAY DEVIATE FROM THE CONDUIT LAYOUT PLAN BASED ON EXISTING FIELD CONDITIONS INCLUDING USE OF JUNCTION BOXES AT BENDS.
2. LOCATION OF POWER SOURCES IS APPROXIMATE. CONTRACTOR TO FIELD VERIFY ALL POWER SOURCES PRIOR TO CONSTRUCTION.
3. SEE STREET RECONSTRUCTION PLANS, STOP PLANS, AND TRAFFIC SIGNAL PLANS FOR MORE INFORMATION.

LEGEND

---	EXISTING ROW LINE
- - -	STREETCAR ALIGNMENT
- - -	2" ELECTRIC CONDUIT
---	2" ELECTRIC CONDUIT BORING
△	CONCRETE SIDEWALK
■	DETECTABLE WARNING
○	OCS POLE
⊙	PROPOSED STREETCAR STOP LIGHT
■	PROPOSED JUNCTION BOX
■	PROPOSED JUNCTION BOX FROM EXISTING LIGHT

NO	DATE	REVISION	APPROVED
1	7/31/15		



URS 2829 Montana Suite 206
El Paso, Texas 79903
(915) 493-6468
TBPE REGISTRATION NO. F-3162

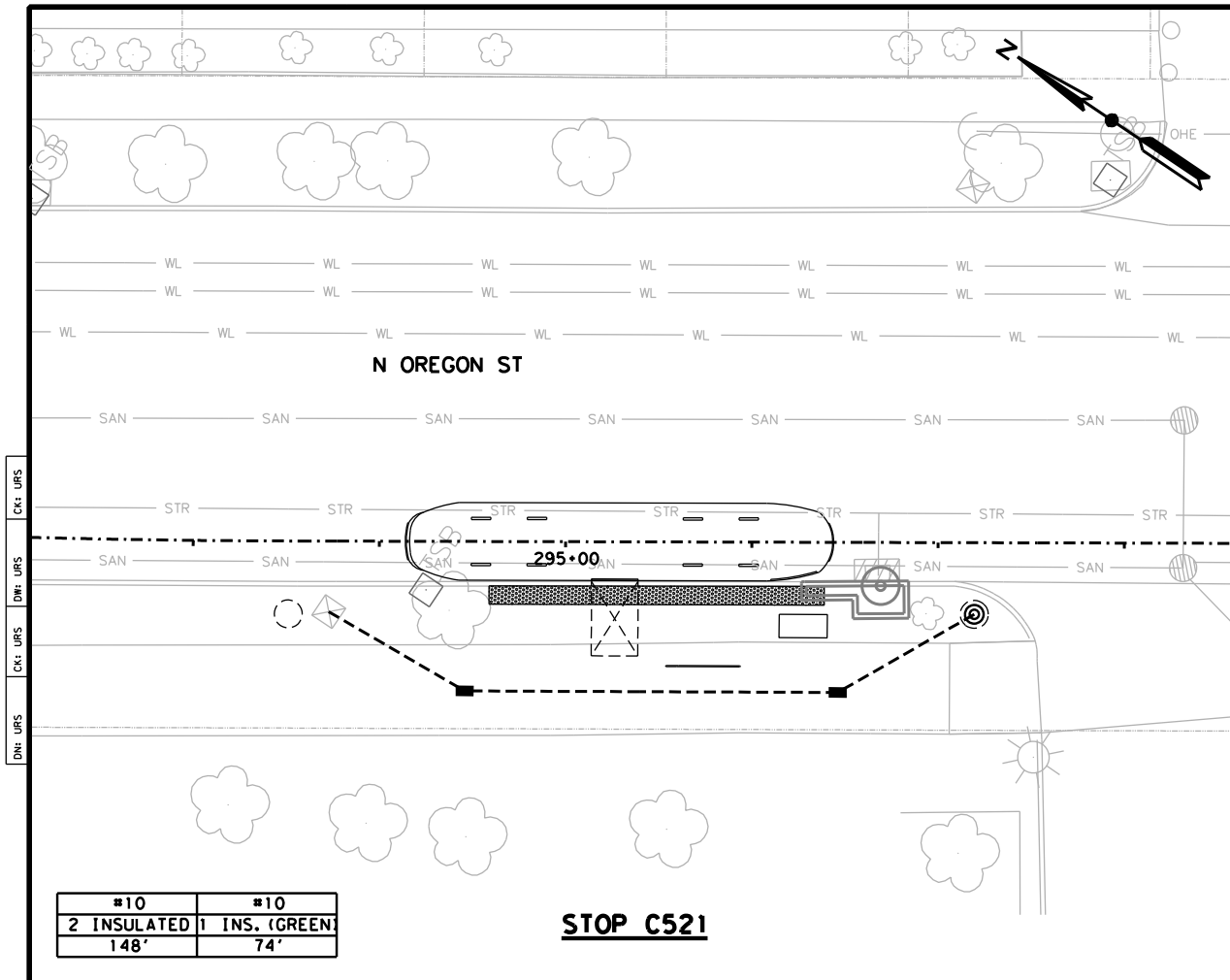
**COEP STREETCAR
ELECTRIC
CONDUIT
RUNS**



N105

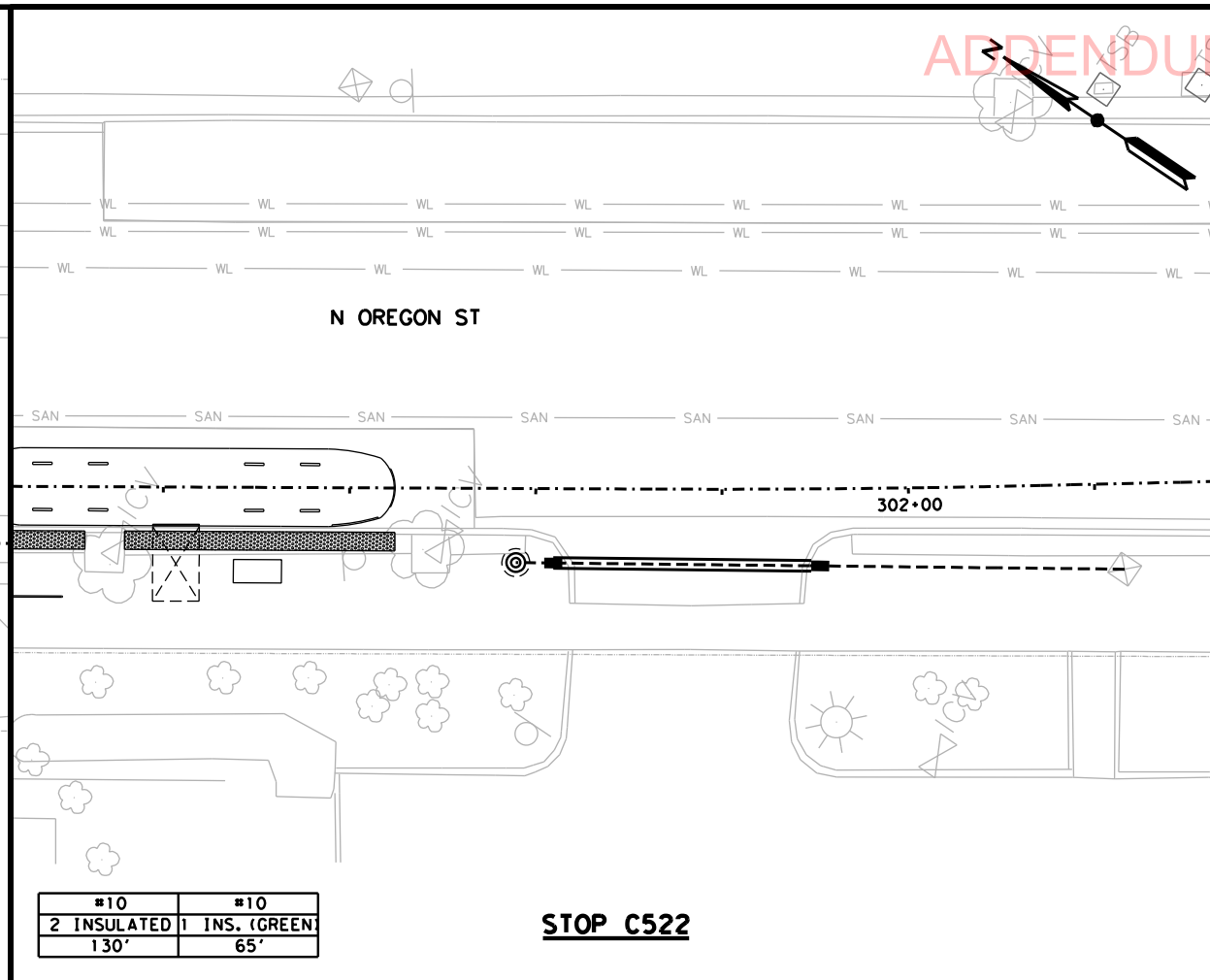
CONT	SECT	JOB	HIGHWAY
0924	06	446	VARIOUS
DIST	COUNTY	SHEET NO.	
EL PASO	EL PASO	701	

DATE: 7/31/2015 11:45:29 AM
FILE: c:\pwworking\andrew_higgins\transportation\cns36671\ILL_STP_ELE_07.dgn



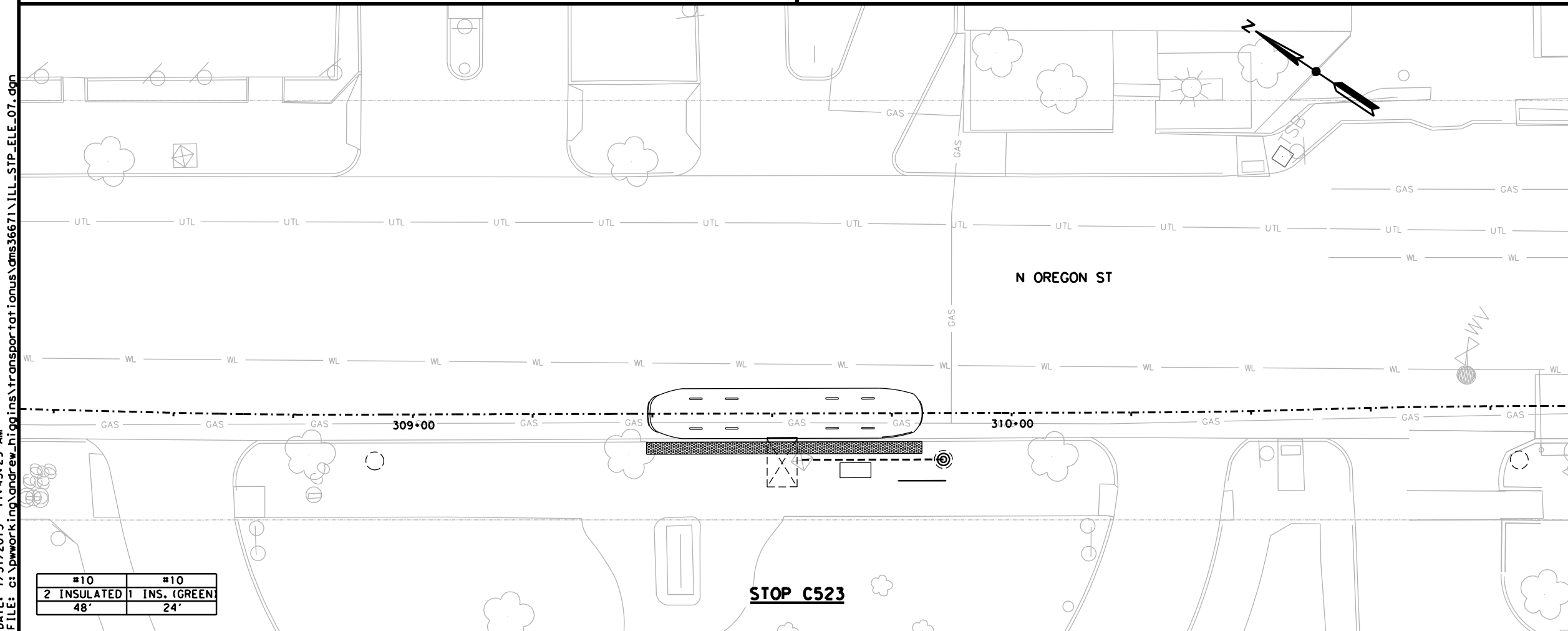
#10	#10
2 INSULATED	1 INS. (GREEN)
148'	74'

STOP C521



#10	#10
2 INSULATED	1 INS. (GREEN)
130'	65'

STOP C522



#10	#10
2 INSULATED	1 INS. (GREEN)
48'	24'

STOP C523

ADDENDUM 4 - JULY 31, 2015
0' 10' 20'
SCALE IN FEET

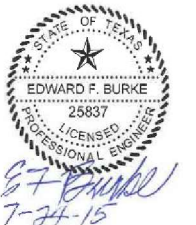
NOTES:

1. CONTRACTOR MAY DEViate FROM THE CONDUIT LAYOUT PLAN BASED ON EXISTING FIELD CONDITIONS INCLUDING USE OF JUNCTION BOXES AT BENDS.
2. LOCATION OF POWER SOURCES IS APPROXIMATE. CONTRACTOR TO FIELD VERIFY ALL POWER SOURCES PRIOR TO CONSTRUCTION.
3. SEE STREET RECONSTRUCTION PLANS, STOP PLANS, AND TRAFFIC SIGNAL PLANS FOR MORE INFORMATION.

LEGEND

- EXISTING ROW LINE
- STREETCAR ALIGNMENT
- 2" ELECTRIC CONDUIT
- 2" ELECTRIC CONDUIT BORING
- CONCRETE SIDEWALK
- DETECTABLE WARNING
- OCS POLE
- PROPOSED STREETCAR STOP LIGHT
- PROPOSED JUNCTION BOX
- PROPOSED JUNCTION BOX FROM EXISTING LIGHT

NO	DATE	REVISION	APPROVED
1	7/31/15		



URS 2829 Montana Suite 206
El Paso, Texas 79903
(915) 493-6468
TBPE REGISTRATION NO. F-3162

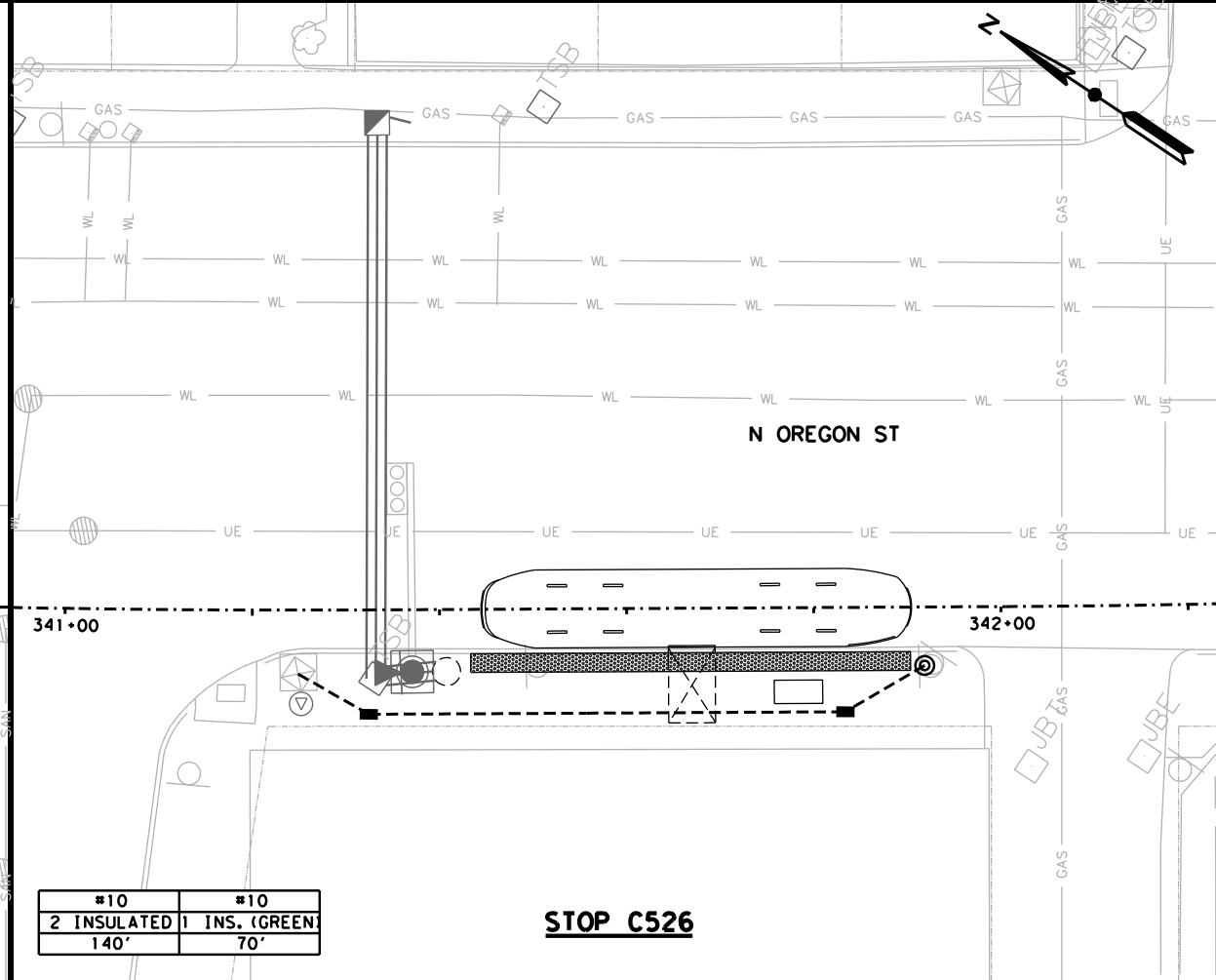
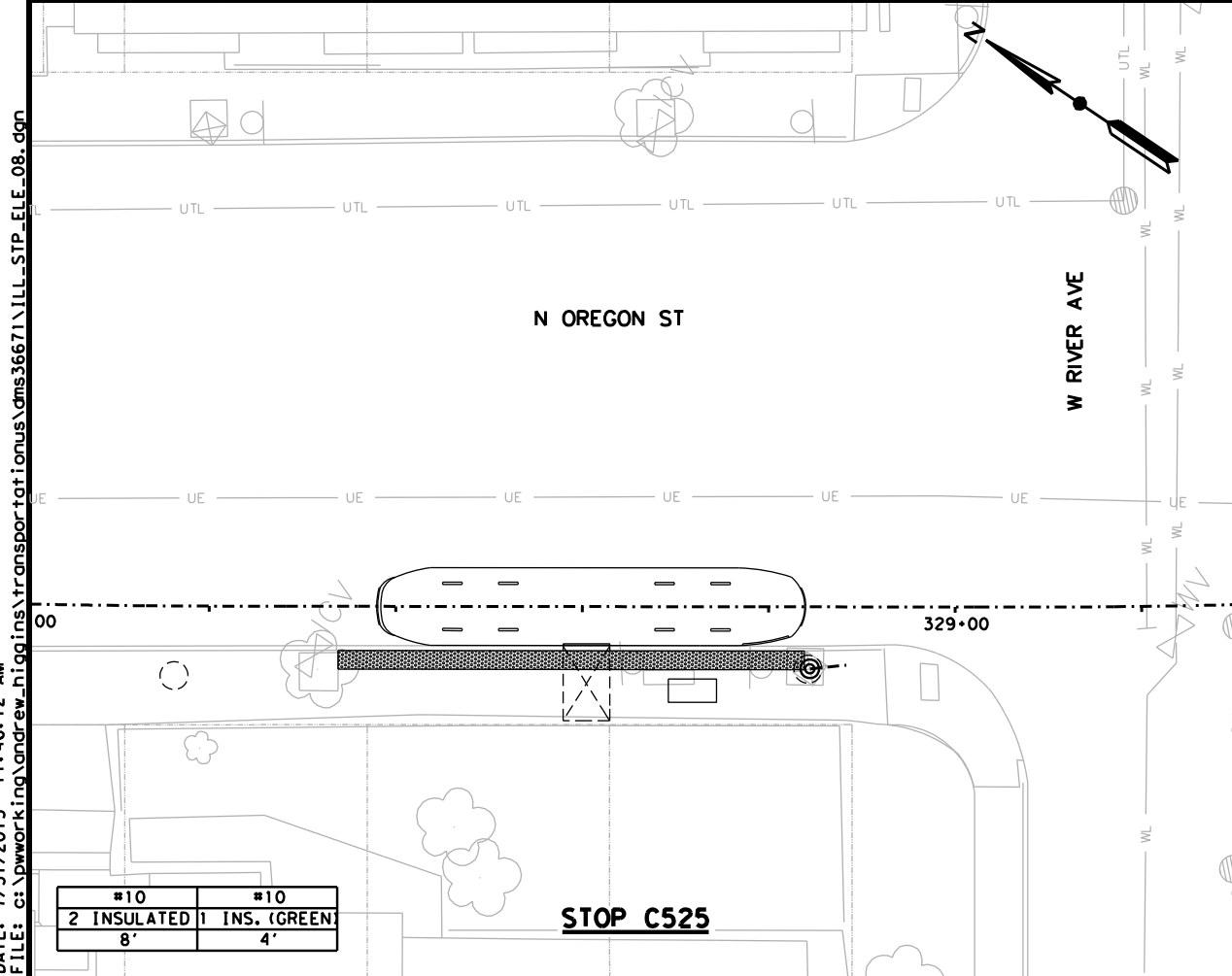
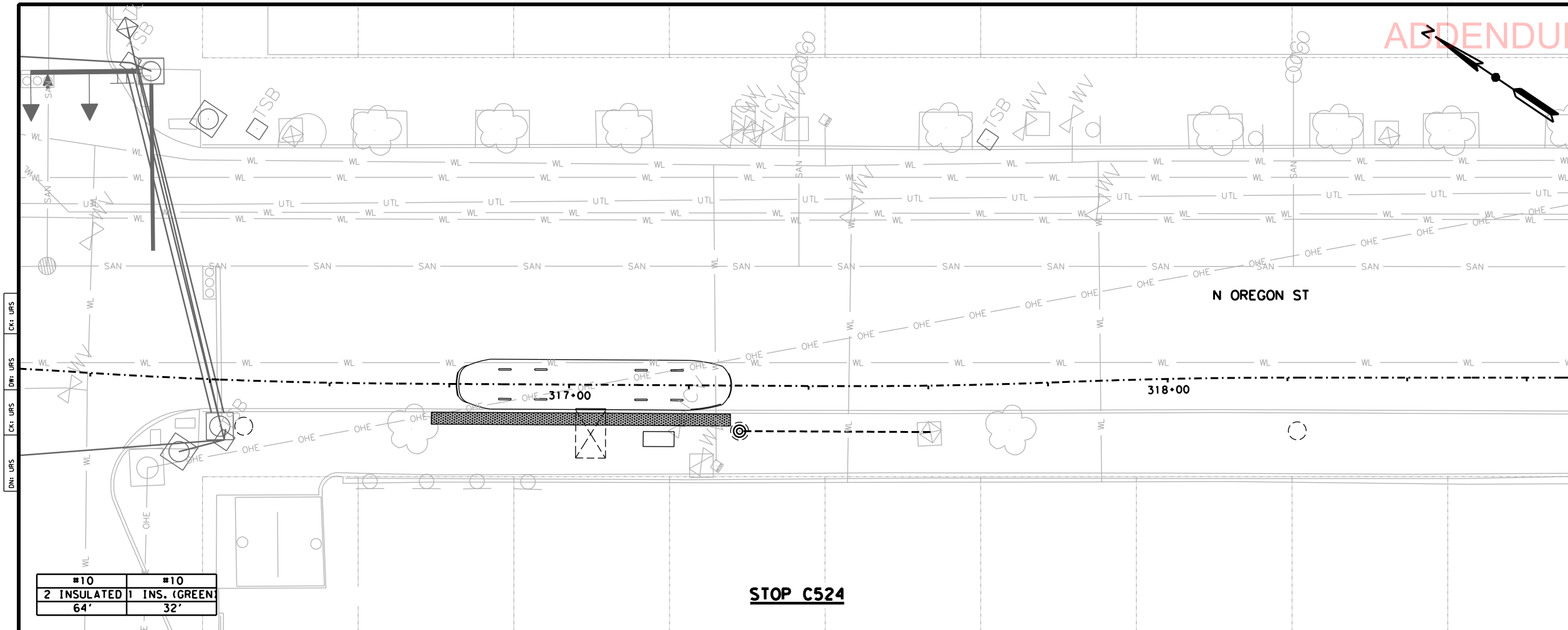
**COEP STREETCAR
ELECTRIC
CONDUIT
RUNS**



N106

CONT	SECT	JOB	HIGHWAY
0924	06	446	VARIOUS
DIST	COUNTY	SHEET NO.	
EL PASO	EL PASO	702	

DATE: 7/31/2015 11:46:12 AM
FILE: c:\pwworking\andrew_niggins\transportation\cns36671\ILL_STP_ELE_08.dgn



ADDENDUM 4 - JULY 31, 2015

0' 10' 20'

SCALE IN FEET

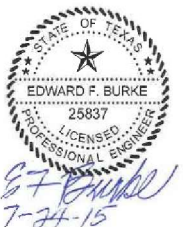
NOTES:

1. CONTRACTOR MAY DEViate FROM THE CONDUIT LAYOUT PLAN BASED ON EXISTING FIELD CONDITIONS INCLUDING USE OF JUNCTION BOXES AT BENDS.
2. LOCATION OF POWER SOURCES IS APPROXIMATE. CONTRACTOR TO FIELD VERIFY ALL POWER SOURCES PRIOR TO CONSTRUCTION.
3. SEE STREET RECONSTRUCTION PLANS, STOP PLANS, AND TRAFFIC SIGNAL PLANS FOR MORE INFORMATION.

LEGEND

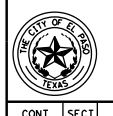
	EXISTING ROW LINE
	STREETCAR ALIGNMENT
	2" ELECTRIC CONDUIT
	2" ELECTRIC CONDUIT BORING
	CONCRETE SIDEWALK
	DETECTABLE WARNING
	OCS POLE
	PROPOSED STREETCAR STOP LIGHT
	PROPOSED JUNCTION BOX
	PROPOSED JUNCTION BOX FROM EXISTING LIGHT

NO	DATE	REVISION	APPROVED
1	7/31/15		
2			
3			
4			



URS 2829 Montana Suite 206
El Paso, Texas 79903
(915) 493-6468
TBPE REGISTRATION NO. F-3162

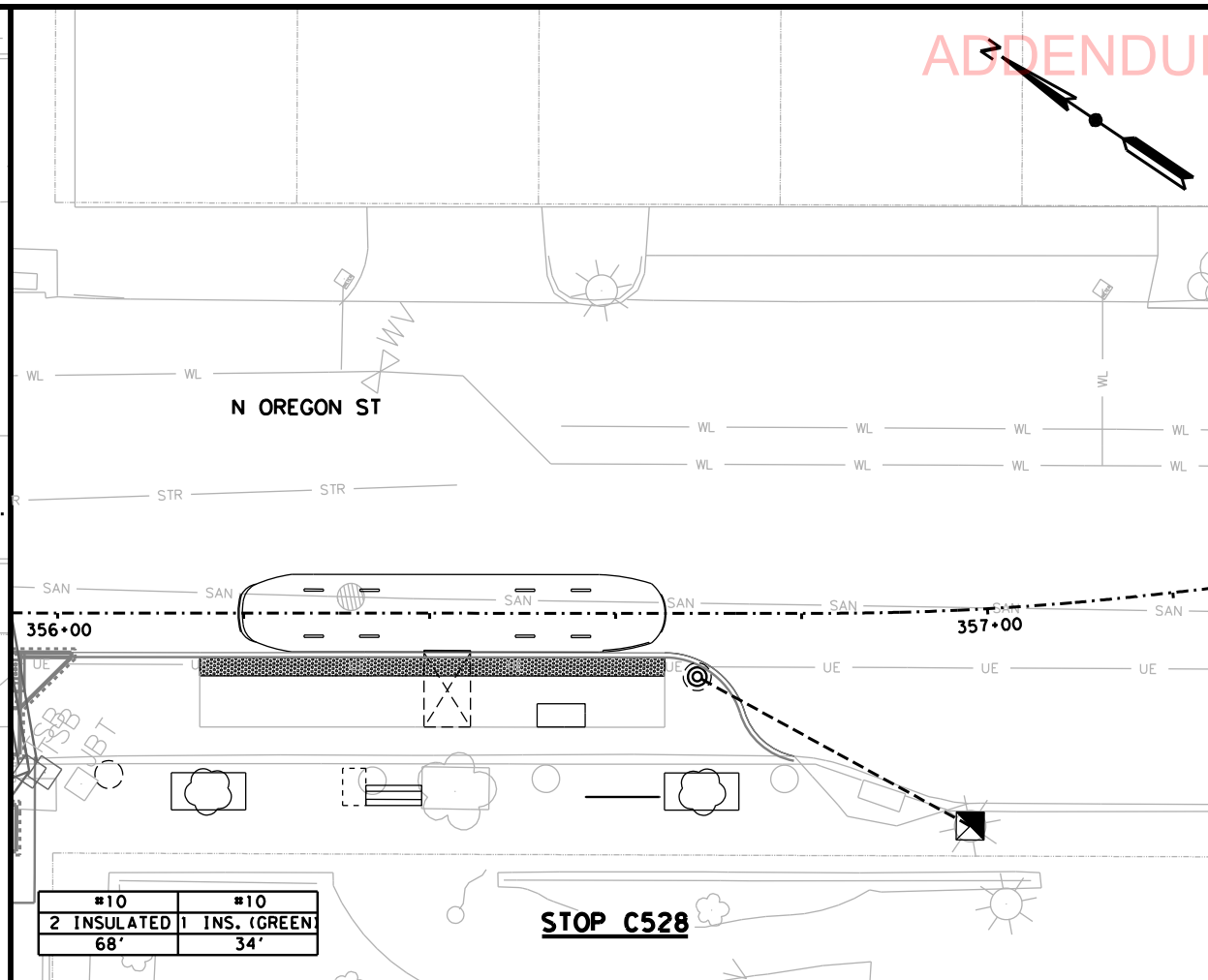
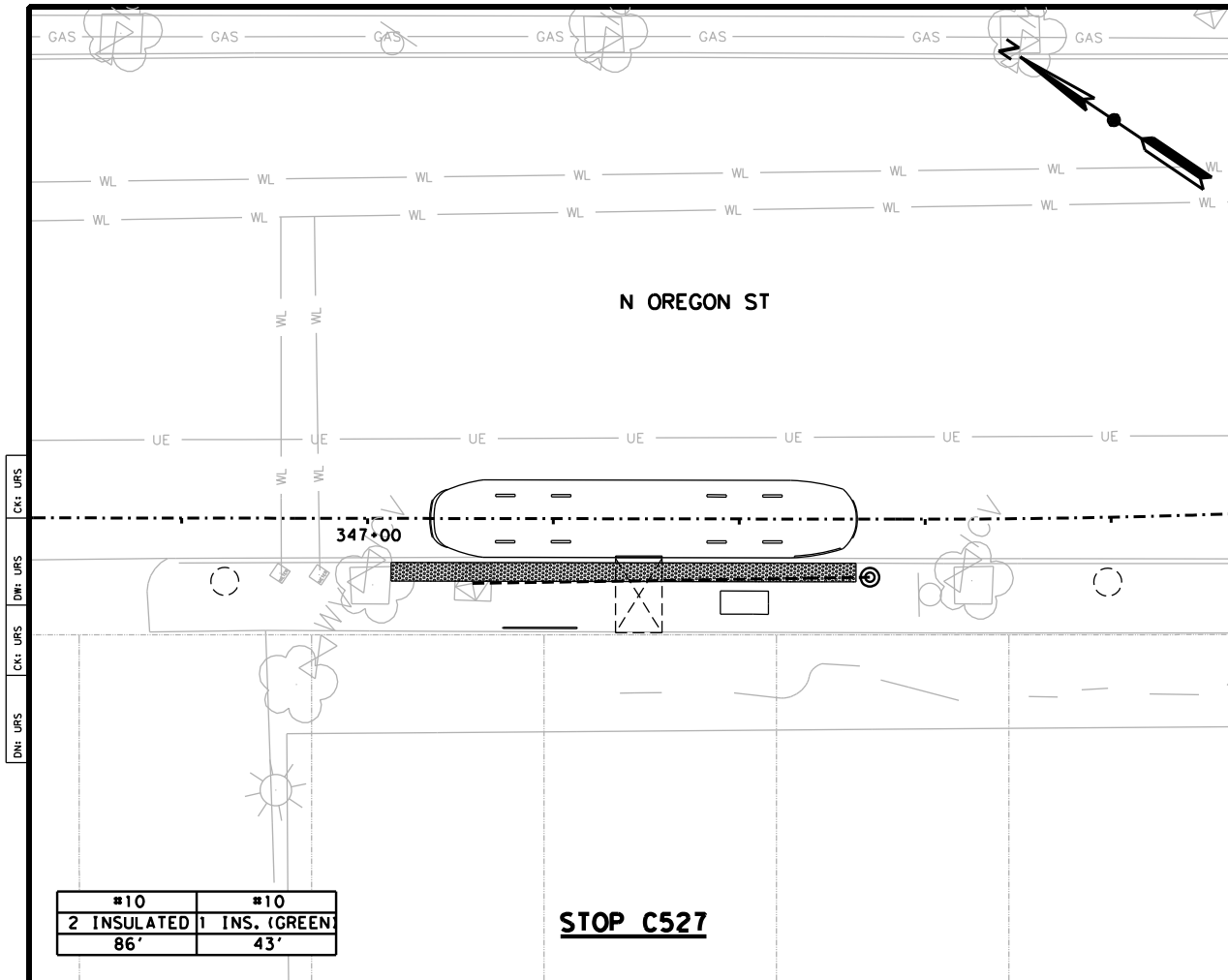
**COEP STREETCAR
ELECTRIC
CONDUIT
RUNS**



N107

CONT	SECT	JOB	HIGHWAY
0924	06	446	VARIOUS
DIST	COUNTY	SHEET NO.	
EL PASO	EL PASO	703	

DATE: 7/31/2015 11:47:45 AM
FILE: c:\pwworking\andrew_niggins\transportation\cns36671\ILL_STP_ELE_09.dgn



ADDENDUM 4 - JULY 31, 2015
0' 10' 20'
SCALE IN FEET

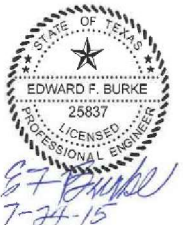
NOTES:

1. CONTRACTOR MAY DEVIATE FROM THE CONDUIT LAYOUT PLAN BASED ON EXISTING FIELD CONDITIONS INCLUDING USE OF JUNCTION BOXES AT BENDS.
2. LOCATION OF POWER SOURCES IS APPROXIMATE. CONTRACTOR TO FIELD VERIFY ALL POWER SOURCES PRIOR TO CONSTRUCTION.
3. SEE STREET RECONSTRUCTION PLANS, STOP PLANS, AND TRAFFIC SIGNAL PLANS FOR MORE INFORMATION.

LEGEND

- EXISTING ROW LINE
- STREETCAR ALIGNMENT
- 2" ELECTRIC CONDUIT
- 2" ELECTRIC CONDUIT BORING
- CONCRETE SIDEWALK
- DETECTABLE WARNING
- OCS POLE
- PROPOSED STREETCAR STOP LIGHT
- PROPOSED JUNCTION BOX
- PROPOSED JUNCTION BOX FROM EXISTING LIGHT

NO	DATE	REVISION	APPROVED



URS 2829 Montana Suite 206
El Paso, Texas 79903
(915) 493-6468
TBPE REGISTRATION NO. F-3162

**COEP STREETCAR
ELECTRIC
CONDUIT
RUNS**



N108

CONT	SECT	JOB	HIGHWAY
0924	06	446	VARIOUS
DIST	COUNTY	SHEET NO.	
EL PASO	EL PASO	704	