

CAMINO REAL REGIONAL MOBILITY AUTHORITY BOARD RESOLUTION

WHEREAS, the Camino Real Regional Mobility Authority (CRRMA) and Moreno Cardenas, Inc. (Engineer) entered into a Contract for Engineering Services dated August 14, 2019 (Contract) for the Engineer to provide various design services to the CRRMA, as may be requested from time to time, via execution of a Work Authorization; and

WHEREAS, the CRRMA and Engineer executed Work Authorization No. 2 as revised by Amendment No. 1 and Amendment No. 2, each pursuant to the Contract, for the Engineer to provide various design services necessary for the Tom Mays Drive Extension Project; and

WHEREAS, the CRRMA and Engineer executed Work Authorization No. 2, as revised, for the Engineer to provide design services necessary for the Tom Mays Drive Extension Project and the parties now desire to incorporate additional landscaping design services not previously anticipated, into the project, which requires another amendment.

NOW, THEREFORE, BE IT RESOLVED BY THE CAMINO REAL REGIONAL MOBILITY AUTHORITY:

THAT, the Executive Director be authorized to execute **Amendment No. 3 to Work Authorization No. 2** with Moreno Cardenas, Inc., including any additional documents or materials as may be required, for the provision of additional landscaping design services for the Tom Mays Drive Extension Project.

PASSED AND APPROVED THIS 10TH DAY OF APRIL 2024.

**CAMINO REAL
REGIONAL MOBILITY AUTHORITY**

ATTEST:

James L. (Jim) Smith, Vice Chair

Monica L. Perez
Board Secretary

APPROVED AS TO CONTENT:

Raymond L. Telles
Executive Director

**WORK AUTHORIZATION NO. 3
CONTRACT FOR ENGINEERING SERVICES**

AMENDMENT NO. 3

THIS AMENDMENT NO. 3 is made pursuant to the terms and conditions of Article 5 of the Contract for Engineering Services, entered into by and between the CAMINO REAL REGIONAL MOBILITY AUTHORITY (CRRMA), and MORENO CARDENAS, INC. (Engineer) dated August 14, 2019 (Contract).

This Amendment No. 3 seeks to amend Work Authorization No. 2 dated December 13, 2021, as revised by Amendment No. 1 dated July 27, 2022 and Amendment No. 2 dated May 22, 2023, which were each executed by and between the parties pursuant to the Contract for the development of the project known as Tom Mays Drive Extension Project (Project).

The terms and conditions of Work Authorization No. 2, as previously amended, are hereby further supplemented to include the additional services identified in **EXHIBIT B-3** in exchange for the additional compensation enumerated within **EXHIBIT D-3**, both of which are attached hereto and incorporated herein for all purposes. The additional services identified within this amendment will be provided pursuant to the schedule enumerated within **EXHIBIT C-1**, which is attached hereto and incorporated herein for all purposes.

This Amendment No. 3 shall become effective on the date of final execution of the Parties hereto. All other terms and conditions of Work Authorization No. 2 not hereby or previously amended, are to remain in full force and effect.

IN WITNESS WHEREOF, this Amendment No. 3 is executed in duplicate counterparts and hereby accepted and acknowledged below.

**CAMINO REAL
REGIONAL MOBILITY AUTHORITY**

By: _____
Name: Raymond L. Telles
Title: Executive Director
Date: _____

MORENO CARDENAS, INC.

By: _____
Name: _____
Title: _____
Date: _____

EXHIBIT B-3

TOM MAYS DRIVE EXTENSION ADDITIONAL DESIGN SERVICES

SCOPE OF SERVICES

The El Paso County has requested additional design services from the Engineer to include the following tasks for landscaping and irrigation:

Section 11 – Planting and Irrigation

PROJECT TASKS

SECTION 11 – PLANTING AND IRRIGATION

- 11.1 The landscape architectural improvements we have accounted for are as follows: Tom Mays Drive - From Westway Boulevard to Nashua Road – Median and Parkway Landscape Improvements will be provided – 0.55 mile. (Landscape Improvements on Nashua Road or Zinn Road are not in contract).

We have accounted for approximately 2,900 feet of roadway, to include services within parkways and center medians as noted above. Special design considerations regarding vehicular visibility will be observed at intersections, driveways, and medians. Within our design intent will be the use of drought tolerant plant material (within the City Approved List), water harvesting techniques, and implement minimal maintenance design. In addition, we have planned for coordination with the City of El Paso Streets Department, adjacent property owners, and possibly other entities associated with the vicinity of the project.

Services do not account for attendance of public meetings or providing exhibits/renderings pertaining the project’s landscape areas. Services account for the attendance of two meetings to take place within the design period. The project will require a phased design process and include an approximate total of 60 sheets at a required 1”=20’ scale.

- 11.2 Landscape and Irrigation Design Plans: The design development for the project will follow a swift approach to work through a Pre-Final Construction Documents (60%) phase and continue through Final Construction (100%) documentation. We anticipate two virtual meetings to discuss possible redlines and have also included time for coordination with the City El Paso, the CRRMA, and the Streets Department. Final construction documents (CDs) will be signed and sealed plans, with pertinent notes and details, and meet minimum Hunt Properties/El Paso Street requirements. Additionally to the construction documents we have accounted for time to accommodate the final CDs to an approximate 25% planting scheme in order to introduce the landscape to the county’s current budget. Because landscape requires irrigation and an irrigation system cannot be designed in an unfinished manner, it is understood that we can scale back the

hydraulic demand to finish a certain percent of landscape within the county's budget (at the time), and then purse the remainder off the 100% CDs. Final CDs will serve as a Master Plan for the completion of the project by others. This task includes digital files (PDFs). The design phases are further described below:

- 60% Pre-Final Construction Documents
 - Review Meeting at Client's Request
 - Digital Copies of Plans
 - Pre-Final Opinion of Probable Cost

- 100% Construction Documents
 - Review Meeting at Client's Request
 - Digital Copies of Plans
 - Pre-Final Opinion of Probable Cost

- Construction Document Value Engineering
 - Review Meeting at Client's Request
 - Digital Copies of Plans revised to show Value Engineered Installation
 - Bidding Phase Services

Task #1 Landscape Architectural Plans

This task accounts for landscape architectural plans with a value engineering phase as stated above. This provides 100% signed and sealed CDs, and includes construction documents from which we will scale back the hydraulic demand to finish a certain percent of landscape within the county's budget (at the time), and then purse the remainder off the 100% CDs. Final CDs will serve as a Master Plan for the completion of the project by others.

Task #2 Planting Plan (Signed and Sealed)

This task accounts for signed and sealed planting plans. This task will only partially fulfill the City of El Paso's Landscape Ordinance, Hunt Requirements, and TECQ Requirements. Additionally, the Option does not account for irrigation plans, nor a value engineering phase. The design phases are further described below:

- 60% Pre-Final Planting Construction Documents
 - Review Meeting at Client's Request
 - Digital Copies of Plans
 - Pre-Final Opinion of Probable Cost

- 100% Planting Construction Documents
 - Review Meeting at Client's Request
 - Digital Copies of Plans
 - Pre-Final Opinion of Probable Cost

- Bidding Phase Services

Task #3 90% Planting Plan and 50% Irrigation Plan (Not Signed and Sealed)

This task accounts for a 90% pre-final planting plan that is sufficiently complete to begin planning for irrigation plans at approximately 50% completion. Plans will not be signed and sealed, and the irrigation plans will not contain hydraulic calculations or a critical analysis. This option will not fulfill the City of El Paso's Landscape Ordinance, Hunt Requirements, and/or TECQ Requirements. A value engineering phase is not included. The design phases are further described below:

- 50% Pre-Final Planting Plans
 - Review Meeting at Client's Request
 - Digital Copies of Plans
 - Pre-Final Opinion of Probable Cost

- 90% Pre-Final Planting Plans and 50% Irrigation Plans
 - Review Meeting at Client's Request
 - Digital Copies of Plans
 - Pre-Final Opinion of Probable Cost

- Bidding Phase Services

11.3 The proposal herein includes Three Tasks, from the most complete and flexible construction documents, to partial plans, and pending final construction documents. It is hereby understood that one of the above Tasks will be noted and accepted for the design team to proceed. This proposal does not include construction administration phase services, however these may be requested and invoiced on a time and materials basis.

[END OF EXHIBIT]

EXHIBIT C-1 SCHEDULE

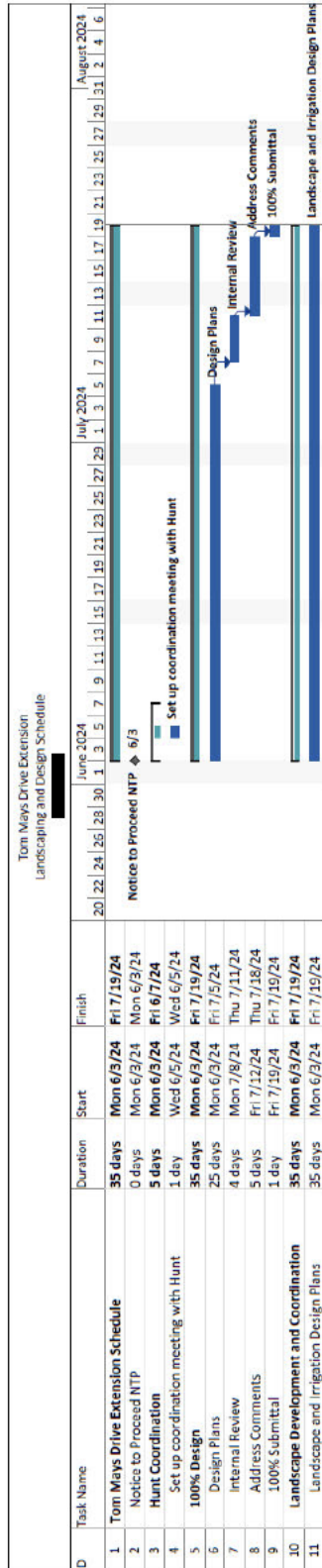


EXHIBIT D-3
FEE SCHEDULE

Moreno Cardenas, Inc.	Date: 4/4/24
Tom Mays Drive Extension	
Exhibit D - Fee Estimate	
FIRM NAME	Fee
Moreno Cardenas, Inc. (MCI) - Prime	
SECTION 1 - PROJECT MANAGEMENT AND COORDINATION	\$6,135.86
SECTION 10 - BID PHASE SERVICES	\$2,989.80
Subtotal Labor (MCI)	\$9,125.66
Direct Costs	\$0.00
Total Mci Fee	\$9,125.66
Subconsultants:	
SECTION 11 - GREENWAY STUDIO	\$ 30,035.00
Subtotal Subconsultants	\$ 30,035.00
TOTAL FEE	\$39,160.66

Exhibit D-3
Tom Mays Drive Extension
Additional Services

Moreno Cardenas, Inc. Tom Mays Drive Extension Exhibit D Fee Estimate														Date: 4/24		
SCOPE OF WORK	Sr Project Manager		Deputy Project Manager		Project Engineer		Design Engineer		Sr Engineering Tech		Engineering Tech		Admin Assistant 3		Totals	
	Hours	\$263.80	Hours	\$ 3.90	Hours	\$ 7.25	Hours	\$97.70	Hours	\$87.93	Hours	\$ 2.36	Hours	\$68.39	Hours	Cost
SECTION 1 PROJECT MANAGEMENT AND COORDINATION																
Develop a Project Management/Work Plan including organization and responsibilities; coordination and communication procedures; coordination meetings between affected stakeholders and Greenway Studio; deliverables; quality control and quality assurance (QC/QA) procedures/plan to ensure the accuracy and quality of the deliverables produced; and other important operational information pertaining to prime provider/CRRMA collaboration	0	\$0.00	4	\$527.60	4	\$469.00	0	\$0.00	0	\$0.00	0	\$0.00	0	\$0.00	8	\$996.60
2. Develop and implement a plan to manage subconsultants (as part of the project management plan); prepare subcontracts for subconsultants; monitor subconsultant activities (staff and schedule); and review and recommend approval of subconsultant progress reports and invoices	0	\$0.00	2	\$263.80	3	\$ 524.25	0	\$0.00	0	\$0.00	0	\$0.00	0	\$0.00	5	\$ 788.05
3 Incorporate Greenway Studio's irrigation and landscaping data into 00% PS&E	0	\$0.00	0	\$0.00	0	\$0.00	0	\$0.00	9	\$79.37	8	\$2,022.48	0	\$0.00	27	\$2,833.85
4 Monthly progress reporting and monthly invoicing	0	\$0.00	2	\$263.80	0	\$0.00	0	\$0.00	0	\$0.00	0	\$0.00	4	\$273.56	6	\$537.36
5 Bidding phase services for any contractor questions	0	\$0.00	0	\$0.00	0	\$0.00	0	\$0.00	0	\$0.00	0	\$0.00	0	\$0.00	0	\$0.00
SUBTOTALS:	0	\$0.00	8	\$1,055.20	17	\$1,993.25	0	\$0.00	9	\$791.37	18	\$2,022.48	4	\$273.56	56	\$6,135.66
SECTION 10 BID PHASE SERVICES																
0 Assist County/CRRMA in preparing for Bids	0	\$0.00	2	\$263.80	4	\$469.00	0	\$0.00	0	\$0.00	0	\$0.00	0	\$0.00	6	\$732.80
0 2 Prepare any addenda to drawings or specifications	0	\$0.00	0	\$0.00	2	\$234.50	4	\$390.80	0	\$0.00	0	\$0.00	0	\$0.00	6	\$625.30
0 3 Assist County/CRRMA in responding to Contractor Questions	0	\$0.00	0	\$0.00	4	\$469.00	2	\$ 95.40	0	\$0.00	0	\$0.00	0	\$0.00	6	\$664.40
0 4 Assist County/CRRMA in evaluating bids received	0	\$0.00	2	\$263.80	2	\$234.50	0	\$0.00	0	\$0.00	0	\$0.00	0	\$0.00	4	\$498.30
0 5 Provide letter recommendation for award	0	\$0.00	0	\$0.00	4	\$469.00	0	\$0.00	0	\$0.00	0	\$0.00	0	\$0.00	4	\$469.00
SUBTOTALS:	0	\$0.00	4	\$527.60	16	\$1,876.00	6	\$586.20	0	\$0.00	0	\$0.00	0	\$0.00	26	\$2,989.80
TOTAL	0	\$0.00	12	\$1,582.80	33	\$3,869.25	6	\$586.20	9	\$791.37	18	\$2,022.48	4	\$273.56	82	\$9,125.66
TOTAL LABOR			\$9,125.66													
DIRECT COSTS			\$0.00													
SUBCONSULTANTS			\$30,035.00													
Section Greenway Studio			\$30,035.00													
TOTAL			\$39,160.66													

TOM MAYS EXTENSION LA FEE SCHEDULE

March 25, 2024



Task Description	Principal		Landscape Architect		Rendering & Graphics Specialist		Project Manager/Licensed Irrigator		Landscape/Irrigation Designer		Administrative Assistant		Totals
	Hours	Rate	Hours	Rate	Hours	Rate	Hours	Rate	Hours	Rate	Hours	Rate	
	\$140.00		\$135.00		\$95.00		\$90.00		\$85.00		\$70.00		
A. Landscape Architectural													
1 Concept Design													
Site Visit (& Analysis)	0	\$0.00	4	\$540.00	0	\$0.00	4	\$360.00	0	\$0.00	0	\$0.00	\$900.00
Team Kick-Off Mtg.	0	\$0.00	2	\$270.00	0	\$0.00	0	\$0.00	2	\$170.00	0	\$0.00	\$440.00
General Coordination	0	\$0.00	2	\$270.00	0	\$0.00	0	\$0.00	2	\$170.00	0	\$0.00	\$440.00
Subtotal	0	\$0.00	8	\$1,080.00	0	\$0.00	4	\$360.00	4	\$340.00	0	\$0.00	\$1,780.00
2 Construction Document Value Engineering													
Landscape and Hardscape	0	\$0.00	2	\$270.00	0	\$0.00	3	\$270.00	36	\$3,060.00	0	\$0.00	\$3,600.00
Irrigation Plans	0	\$0.00	0	\$0.00	0	\$0.00	4	\$360.00	24	\$2,040.00	0	\$0.00	\$2,400.00
Existing Landscape & Irrigation Assessment	0	\$0.00	0	\$0.00	0	\$0.00	0	\$0.00	0	\$0.00	0	\$0.00	\$0.00
Details	0	\$0.00	0	\$0.00	0	\$0.00	0	\$0.00	0	\$0.00	0	\$0.00	\$0.00
Opinion of Probable Cost	0	\$0.00	0	\$0.00	0	\$0.00	1	\$90.00	1	\$85.00	0	\$0.00	\$175.00
Specifications	0	\$0.00	0	\$0.00	0	\$0.00	0	\$0.00	0	\$0.00	0	\$0.00	\$0.00
Consultant QA/QC Coordination	0	\$0.00	0	\$0.00	0	\$0.00	2	\$180.00	8	\$680.00	0	\$0.00	\$860.00
Public Outreach / Presentation Renderings	0	\$0.00	0	\$0.00	0	\$0.00	0	\$0.00	0	\$0.00	0	\$0.00	\$0.00
Design Team Meeting	0	\$0.00	2	\$270.00	0	\$0.00	0	\$0.00	0	\$0.00	0	\$0.00	\$270.00
Subtotal	0	\$0.00	4	\$540.00	0	\$0.00	10	\$900.00	69	\$5,865.00	0	\$0.00	\$7,305.00
3 (PHASE NOT USED)													
Landscape and Hardscape Plans	0	\$0.00	0	\$0.00	0	\$0.00	0	\$0.00	0	\$0.00	0	\$0.00	\$0.00
Irrigation Plans	0	\$0.00	0	\$0.00	0	\$0.00	0	\$0.00	0	\$0.00	0	\$0.00	\$0.00
Existing Landscape & Irrigation Assessment	0	\$0.00	0	\$0.00	0	\$0.00	0	\$0.00	0	\$0.00	0	\$0.00	\$0.00
Details	0	\$0.00	0	\$0.00	0	\$0.00	0	\$0.00	0	\$0.00	0	\$0.00	\$0.00
Opinion of Probable Cost	0	\$0.00	0	\$0.00	0	\$0.00	0	\$0.00	0	\$0.00	0	\$0.00	\$0.00
Specifications	0	\$0.00	0	\$0.00	0	\$0.00	0	\$0.00	0	\$0.00	0	\$0.00	\$0.00
Consultant QA/QC Coordination	0	\$0.00	0	\$0.00	0	\$0.00	0	\$0.00	0	\$0.00	0	\$0.00	\$0.00
Public Outreach / Presentation Renderings	0	\$0.00	0	\$0.00	0	\$0.00	0	\$0.00	0	\$0.00	0	\$0.00	\$0.00
CDR Meeting	0	\$0.00	0	\$0.00	0	\$0.00	0	\$0.00	0	\$0.00	0	\$0.00	\$0.00
Bi-weekly Meeting / Comments	0	\$0.00	0	\$0.00	0	\$0.00	0	\$0.00	0	\$0.00	0	\$0.00	\$0.00
Subtotal	0	\$0.00	0	\$0.00	0	\$0.00	0	\$0.00	0	\$0.00	0	\$0.00	\$0.00
4 Pre-Final Construction Documents (60%)													
Landscape and Hardscape Plans	0	\$0.00	4	\$540.00	0	\$0.00	4	\$360.00	50	\$4,250.00	0	\$0.00	\$5,150.00
Irrigation Plans	0	\$0.00	2	\$270.00	0	\$0.00	3	\$270.00	22	\$1,870.00	0	\$0.00	\$2,410.00
Existing Landscape & Irrigation Assessment	0	\$0.00	0	\$0.00	0	\$0.00	0	\$0.00	0	\$0.00	0	\$0.00	\$0.00
Details	0	\$0.00	2	\$270.00	0	\$0.00	3	\$270.00	4	\$340.00	0	\$0.00	\$880.00
Opinion of Probable Cost	0	\$0.00	0	\$0.00	0	\$0.00	2	\$180.00	2	\$170.00	3	\$210.00	\$560.00
Specifications	0	\$0.00	0	\$0.00	0	\$0.00	0	\$0.00	0	\$0.00	0	\$0.00	\$0.00
Consultant QA/QC Coordination	0	\$0.00	2	\$270.00	0	\$0.00	2	\$180.00	20	\$1,700.00	0	\$0.00	\$2,150.00
Public Outreach / Presentation Renderings	0	\$0.00	0	\$0.00	0	\$0.00	0	\$0.00	0	\$0.00	0	\$0.00	\$0.00
Design Team Meeting	2	\$280.00	2	\$270.00	0	\$0.00	0	\$0.00	0	\$0.00	0	\$0.00	\$550.00
Hunt Properties Coordination	0	\$0.00	2	\$270.00	0	\$0.00	0	\$0.00	0	\$0.00	0	\$0.00	\$270.00
Final Phase Subtotal	2	\$280.00	14	\$1,890.00	0	\$0.00	14	\$1,260.00	98	\$8,330.00	3	\$210.00	\$11,970.00
5 Signed & Sealed CDs (100%)													
Landscape and Hardscape Plans	0	\$0.00	2	\$270.00	0	\$0.00	3	\$270.00	25	\$2,125.00	0	\$0.00	\$2,665.00
Irrigation Plans	0	\$0.00	0	\$0.00	0	\$0.00	4	\$360.00	28	\$2,380.00	0	\$0.00	\$2,740.00
Existing Landscape & Irrigation Assessment	0	\$0.00	0	\$0.00	0	\$0.00	0	\$0.00	0	\$0.00	0	\$0.00	\$0.00
Details	0	\$0.00	2	\$270.00	0	\$0.00	2	\$180.00	4	\$340.00	0	\$0.00	\$790.00
Opinion of Probable Cost	0	\$0.00	0	\$0.00	0	\$0.00	1	\$90.00	1	\$85.00	2	\$140.00	\$315.00
Specifications	0	\$0.00	0	\$0.00	0	\$0.00	0	\$0.00	0	\$0.00	0	\$0.00	\$0.00
Consultant QA/QC Coordination	0	\$0.00	4	\$540.00	0	\$0.00	4	\$360.00	12	\$1,020.00	0	\$0.00	\$1,920.00
Public Outreach / Presentation Renderings	0	\$0.00	0	\$0.00	0	\$0.00	0	\$0.00	0	\$0.00	0	\$0.00	\$0.00
Design Team Meeting	2	\$280.00	2	\$270.00	0	\$0.00	0	\$0.00	0	\$0.00	0	\$0.00	\$550.00
Redline Meeting / Comments	0	\$0.00	0	\$0.00	0	\$0.00	0	\$0.00	0	\$0.00	0	\$0.00	\$0.00
Final Phase Subtotal	2	\$280.00	10	\$1,350.00	0	\$0.00	14	\$1,260.00	70	\$5,950.00	2	\$140.00	\$8,980.00
Landscape Design Phase Subtotal	4	\$560.00	36	\$4,860.00	0	\$0.00	42	\$3,780.00	241	\$20,485.00	5	\$350.00	\$30,035.00