

**SUSAN A. MELENDEZ**  
CHAIR

**JOE D. WARDY**  
VICE CHAIR

**LES PARKER**  
TREASURER

**JOE R. FERNANDEZ**  
SECRETARY



**DAVID C. NEMIR**  
ALTERNATE SECRETARY

**MARTHA Y. REYES**  
BOARD MEMBER

**JAMES L. (JIM) SMITH**  
BOARD MEMBER

**RAYMOND L. TELLES**  
EXECUTIVE DIRECTOR

---

**TO: CRRMA Board of Directors**  
**FROM: Raymond L. Telles, Executive Director**  
**DATE: October 11, 2017**  
**RE: César Chávez Express Toll Lanes**  
**Final Performance Report – 4th Quarter of FY17**

---

Board Members,

This performance report for the César Chávez Express Toll Lanes includes transaction and revenue data for the period from the opening date (January 10, 2014) through the termination of service, on August 9, 2017. As the toll operations on the Toll Lanes have ended, this will serve as the final Performance Report.

On the following page, you will find a table that summarizes the performance metrics found graphically on the subsequent pages. As noted in prior reports, this format presents annualized projected revenues and transaction figures, as opposed to the month-to-month format previously used in these reports. For this report, we have also included information on the Veterans Waiver Program as well as information on project revenue and expenses.

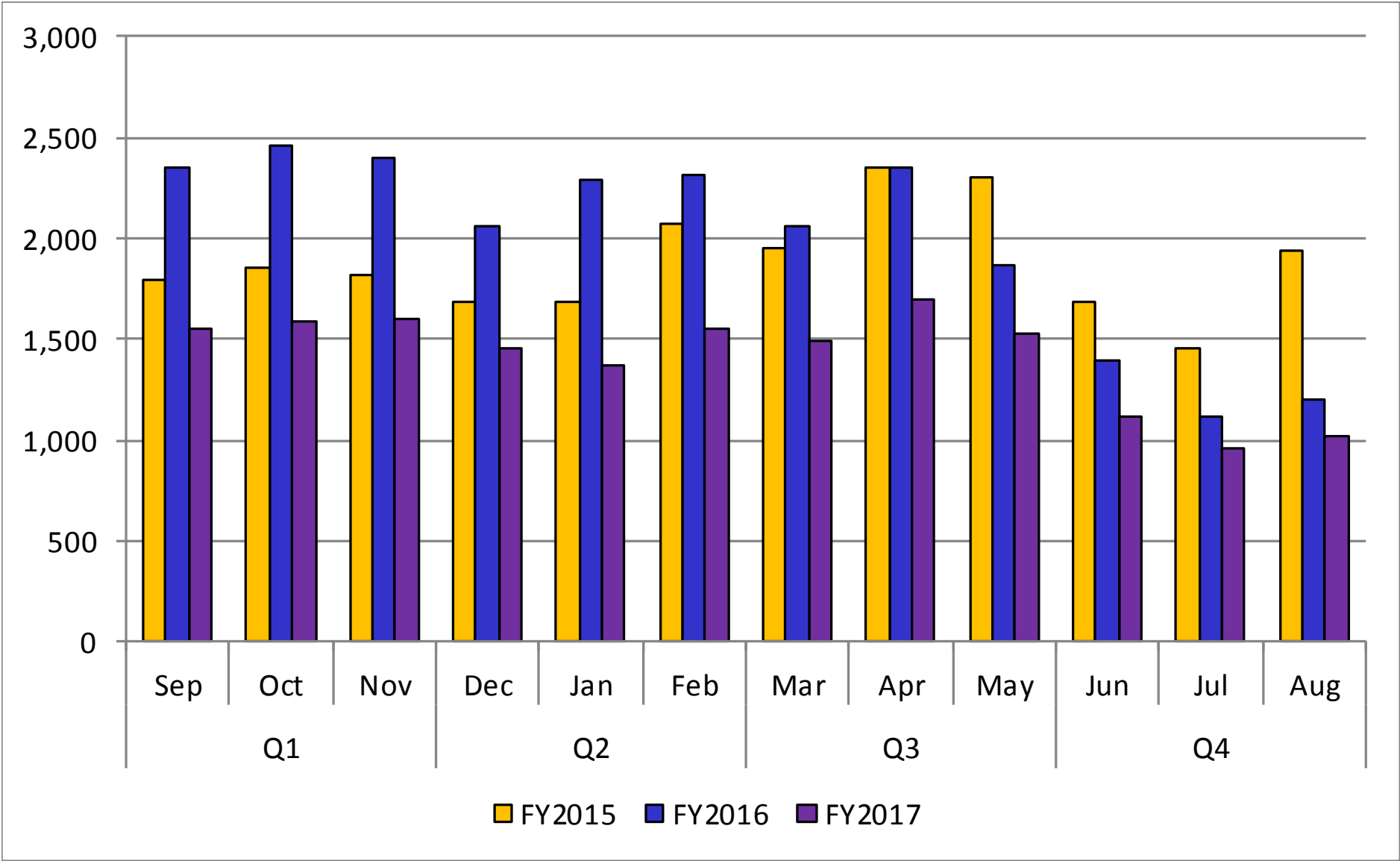
As in the past, a representative of the CRRMA's general engineering consultant will present this information in greater detail during the Board meeting and will be available for questions. Please also let me know of any questions that you may have.

## September 2017 Performance Report

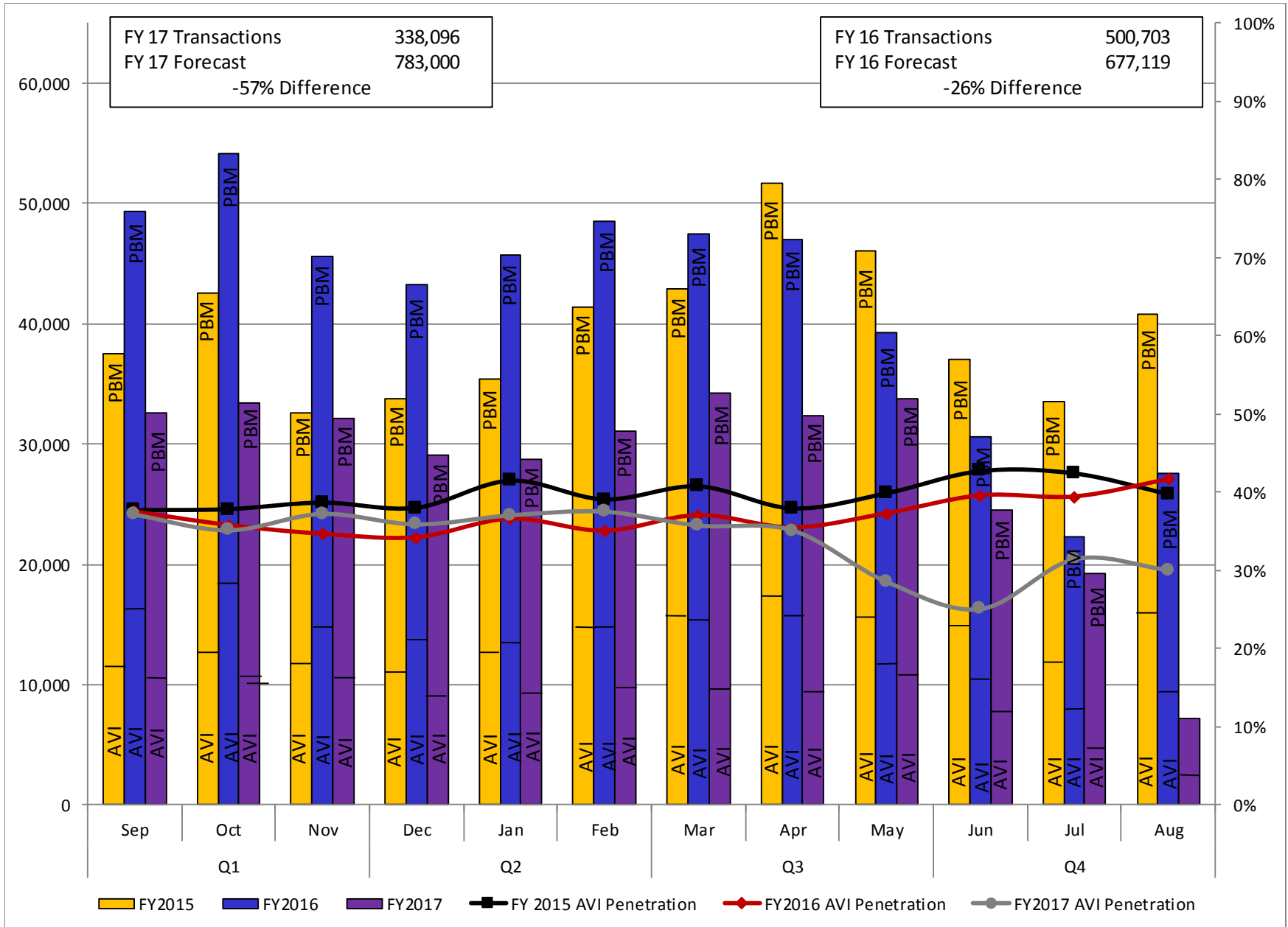
Year	Month	Tags Issued	Accounts Created	AVI		PBM		Total Gross Revenue Collected	Transactions per Working Day
				Transactions	Gross Revenue Collected	Transactions	Gross Revenue Collected		
FY16	September	105	89	16,624	\$ 6,266	32,742	\$ 19,407	\$ 25,673	2,351
	October	92	74	17,508	\$ 7,614	36,633	\$ 17,840	\$ 25,454	2,461
	November	115	99	14,075	\$ 7,197	31,541	\$ 21,457	\$ 28,653	2,401
	December	99	79	13,059	\$ 8,451	30,162	\$ 22,172	\$ 30,623	2,058
	January	122	104	14,708	\$ 6,004	31,028	\$ 14,114	\$ 20,118	2,287
	February	116	103	14,804	\$ 6,227	33,677	\$ 19,607	\$ 25,834	2,309
	March	107	90	15,094	\$ 7,014	32,387	\$ 23,582	\$ 30,596	2,064
	April	101	83	14,703	\$ 6,792	32,248	\$ 22,779	\$ 29,570	2,348
	May	86	75	12,545	\$ 7,333	26,767	\$ 33,989	\$ 41,323	1,872
	June	125	106	10,445	\$ 6,639	20,150	\$ 22,174	\$ 28,813	1,391
	July	80	64	7,540	\$ 6,123	14,728	\$ 16,053	\$ 22,177	1,113
August	115	94	9,959	\$ 5,018	17,576	\$ 17,511	\$ 22,529	1,197	
FY17	September	82	73	10,539	\$ 3,802	22,053	\$ 11,915	\$ 15,717	1,552
	October	97	78	10,301	\$ 4,558	23,138	\$ 11,911	\$ 16,469	1,592
	November	73	57	10,431	\$ 5,819	21,669	\$ 15,179	\$ 20,997	1,605
	December	94	83	8,927	\$ 5,605	20,159	\$ 13,218	\$ 18,823	1,454
	January	97	76	9,280	\$ 5,745	19,452	\$ 17,825	\$ 23,569	1,368
	February	97	84	9,979	\$ 4,963	21,092	\$ 12,932	\$ 17,895	1,554
	March	83	71	9,958	\$ 4,964	24,251	\$ 15,935	\$ 20,899	1,487
	April	65	56	9,374	\$ 5,031	22,937	\$ 11,781	\$ 16,812	1,701
	May	81	66	10,205	\$ 6,176	23,509	\$ 17,408	\$ 23,583	1,532
	June	97	83	7,043	\$ 5,125	17,440	\$ 12,008	\$ 17,133	1,113
	July	104	88	5,618	\$ 4,129	13,600	\$ 11,488	\$ 15,616	961
August	99	88	2,053	\$ 6,451	5,088	\$ 11,391	\$ 17,843	1,020	
<b>TOTALS</b>		<b>4,807</b>	<b>3,668</b>	<b>499,989</b>	<b>\$ 250,644</b>	<b>1,048,177</b>	<b>\$ 727,025</b>	<b>\$ 977,668</b>	<b>1,692</b>

\*NOTES: The yellow box in the Transactions per Working Day column denotes the average and not a total.

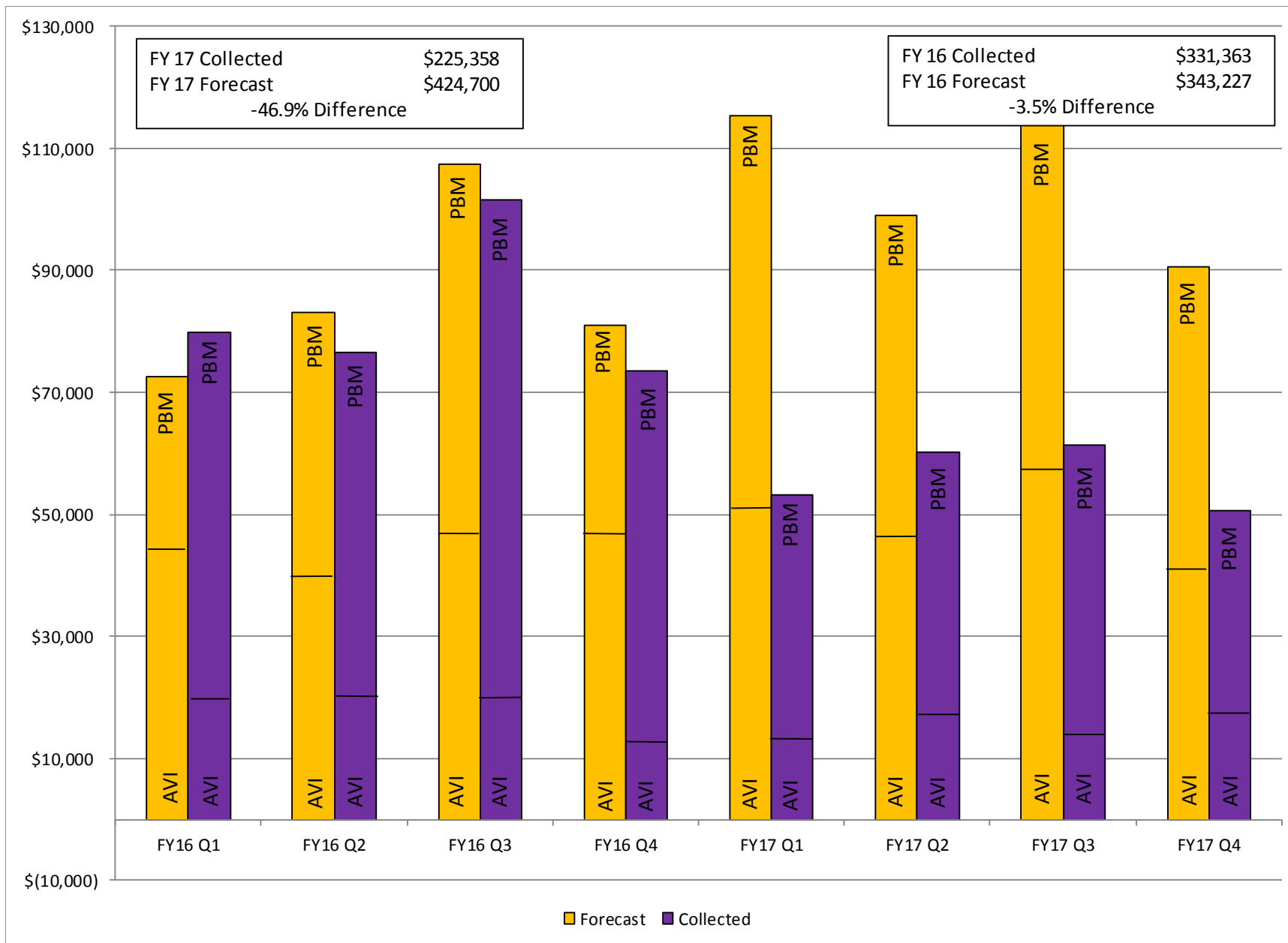
Transactions per Working Day



## Transactions



## Revenue



### Veteran Toll Waiver Program

Year	Month	Tags Issued	Program Transactions	% of Total Transactions
FY16	Oct	13	-	-
	Nov	32	297	0.8%
	Dec	15	665	1.7%
	Jan	3	704	1.5%
	Feb	11	744	1.6%
	Mar	10	984	1.9%
	Apr	11	787	1.7%
	May	7	939	2.0%
	Jun	1	682	2.9%
	Jul	0	846	3.8%
	Aug	2	853	3.2%
	FY17	Sep	1	911
Oct		2	1,059	3.3%
Nov		1	1,179	3.2%
Dec		5	795	3.3%
Jan		7	1,198	3.2%
Feb		2	1,103	3.4%
Mar		3	1,143	3.9%
Apr		2	1,263	3.8%
May		3	1,133	3.5%
Jun		0	1,277	4.4%
Jul		0	1,164	4.8%
Aug		0	76	2.8%
Total		131	19,802	2.90%

Revenue and Expenses

Fiscal Year	Actuals	
	Revenue	Expenses
2014	\$ 107,271	\$ 346,298
2015	\$ 313,676	\$ 496,317
2016	\$ 331,363	\$ 503,271
2017	\$ 225,358	\$ 436,287
Totals	\$ 977,668	\$ 1,782,174