

VACANT
CHAIR

JOE D. WARDY
VICE CHAIR

LES PARKER
TREASURER

SUSAN A. MELENDEZ
SECRETARY



YOLANDA GINER
MEMBER

DAVID C. NEMIR
MEMBER

JOE FERNANDEZ
MEMBER

RAYMOND L. TELLES
EXECUTIVE DIRECTOR

TO: CRRMA Board of Directors
FROM: Raymond L. Telles, Executive Director
DATE: January 13, 2016
RE: César Chávez Express Toll Lanes
Performance Report – 1st Quarter of FY16

Board Members,

This performance report for the César Chávez Express Toll Lanes includes transaction and revenue data for the period from the opening date (January 10, 2014) through the end of the CRRMA's 1st quarter of fiscal year 2016 (period ending November 30, 2015).

On the following page, you will find a table that summarizes the performance metrics found graphically on the subsequent pages. As noted in prior reports, this format presents annualized projected revenues and transaction figures, as opposed to the month-to-month format previously used in these reports. As always, please let me know of any changes to format or content that you would like to see in future reports.

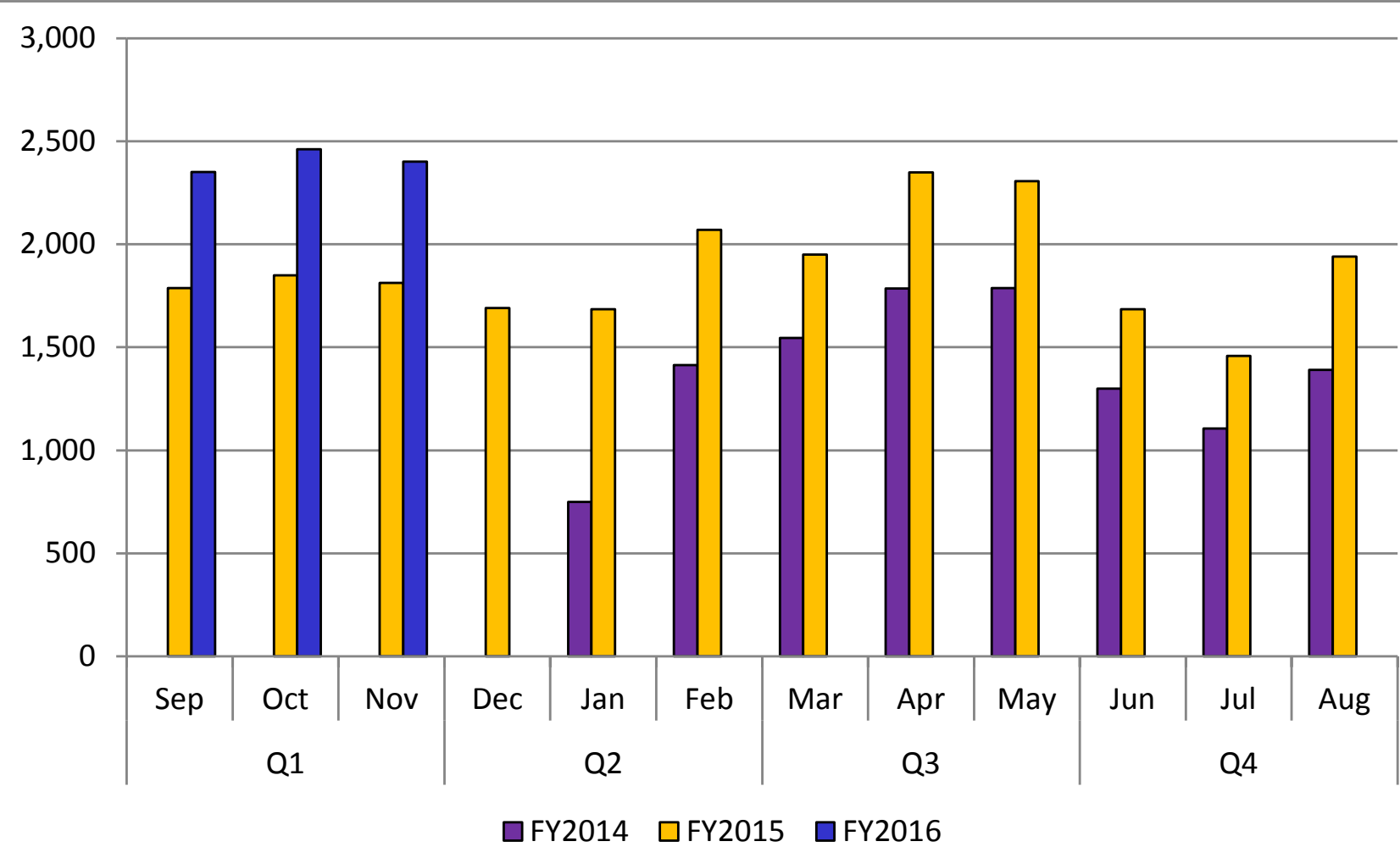
As in the past, a representative of the CRRMA's general engineering consultant will present this information in greater detail during the Board meeting and will be available for questions. Please also let me know of any questions that you may have.

January 2016 Performance Report

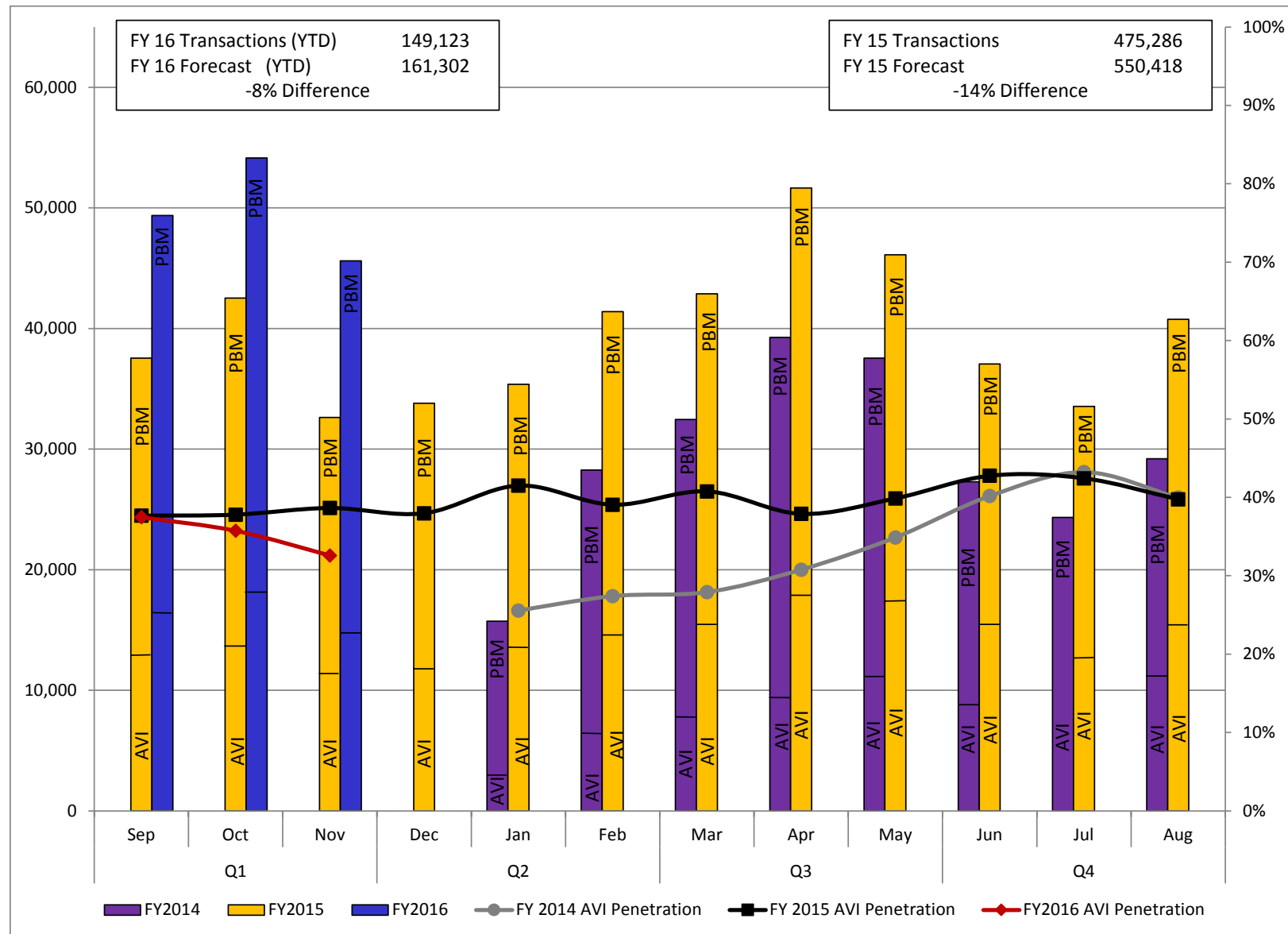
Year	Month	Tags Issued	Accounts Created	AVI		PBM		Total Gross Revenue Collected	Transactions per Working Day
				Transactions	Gross Revenue Collected	Transactions	Gross Revenue Collected		
FY 14	January*	471	294	2,845	\$ -	12,878	\$ -	\$ -	749
	February	117	89	6,329	\$ -	21,926	\$ -	\$ -	1,413
	March	94	73	7,459	\$ 1,377	25,001	\$ 5,386	\$ 6,763	1,546
	April	172	125	9,920	\$ 3,155	29,351	\$ 9,388	\$ 12,544	1,785
	May	124	103	10,841	\$ 4,292	26,696	\$ 15,097	\$ 19,389	1,787
	June	76	63	9,335	\$ 5,724	17,961	\$ 21,891	\$ 27,614	1,300
	July	298	71	9,486	\$ 6,165	14,852	\$ 16,624	\$ 22,790	1,106
	August	140	90	10,516	\$ 4,757	18,685	\$ 13,413	\$ 18,171	1,391
FY 15	September	84	70	12,876	\$ 5,020	24,672	\$ 12,789	\$ 17,809	1,788
	October	100	78	13,788	\$ 5,265	28,726	\$ 11,424	\$ 16,689	1,848
	November	89	68	11,587	\$ 6,177	21,043	\$ 15,892	\$ 22,070	1,813
	December	76	59	11,725	\$ 7,766	22,073	\$ 26,725	\$ 34,491	1,690
	January	56	47	13,273	\$ 5,928	22,107	\$ 19,491	\$ 25,420	1,685
	February	81	67	14,682	\$ 5,994	26,711	\$ 18,539	\$ 24,533	2,070
	March	87	70	15,477	\$ 5,897	27,401	\$ 21,580	\$ 27,476	1,949
	April	72	63	17,348	\$ 7,868	34,313	\$ 17,321	\$ 25,188	2,348
	May	94	73	16,304	\$ 7,707	29,808	\$ 20,059	\$ 27,766	2,306
	June	87	70	14,244	\$ 7,492	22,822	\$ 26,517	\$ 34,009	1,685
	July	72	63	12,642	\$ 10,031	20,904	\$ 18,881	\$ 28,912	1,459
	August	94	73	14,540	\$ 6,985	26,220	\$ 22,329	\$ 29,314	1,941
FY16	September	73	58	16,624	\$ 6,266	32,742	\$ 19,407	\$ 25,673	2,351
	October	84	73	17,508	\$ 7,614	36,633	\$ 17,840	\$ 25,454	2,461
	November	87	71	14,075	\$ 7,197	31,541	\$ 21,457	\$ 28,653	2,401
TOTALS		2,728	1,911	283,424	\$ 128,677	575,066	\$ 372,052	\$ 500,729	1,777

*NOTES: (1) The César Chávez Express Toll Lanes opened on January 10, 2014. (2) Figures provided in the January "Tags Issued" and "Accounts Created" rows include December 2013 activity. (3) The yellow box in the Transactions per Working Day column denotes the average and not a total.

Transactions per Working Day



Transactions



Revenue

