



CAMINO REAL
REGIONAL MOBILITY
AUTHORITY

**General Engineering
Consultant Team Resources**

**Presentation to the
CRRMA Board of Directors**

**David Head, Atkins
July 13, 2016**

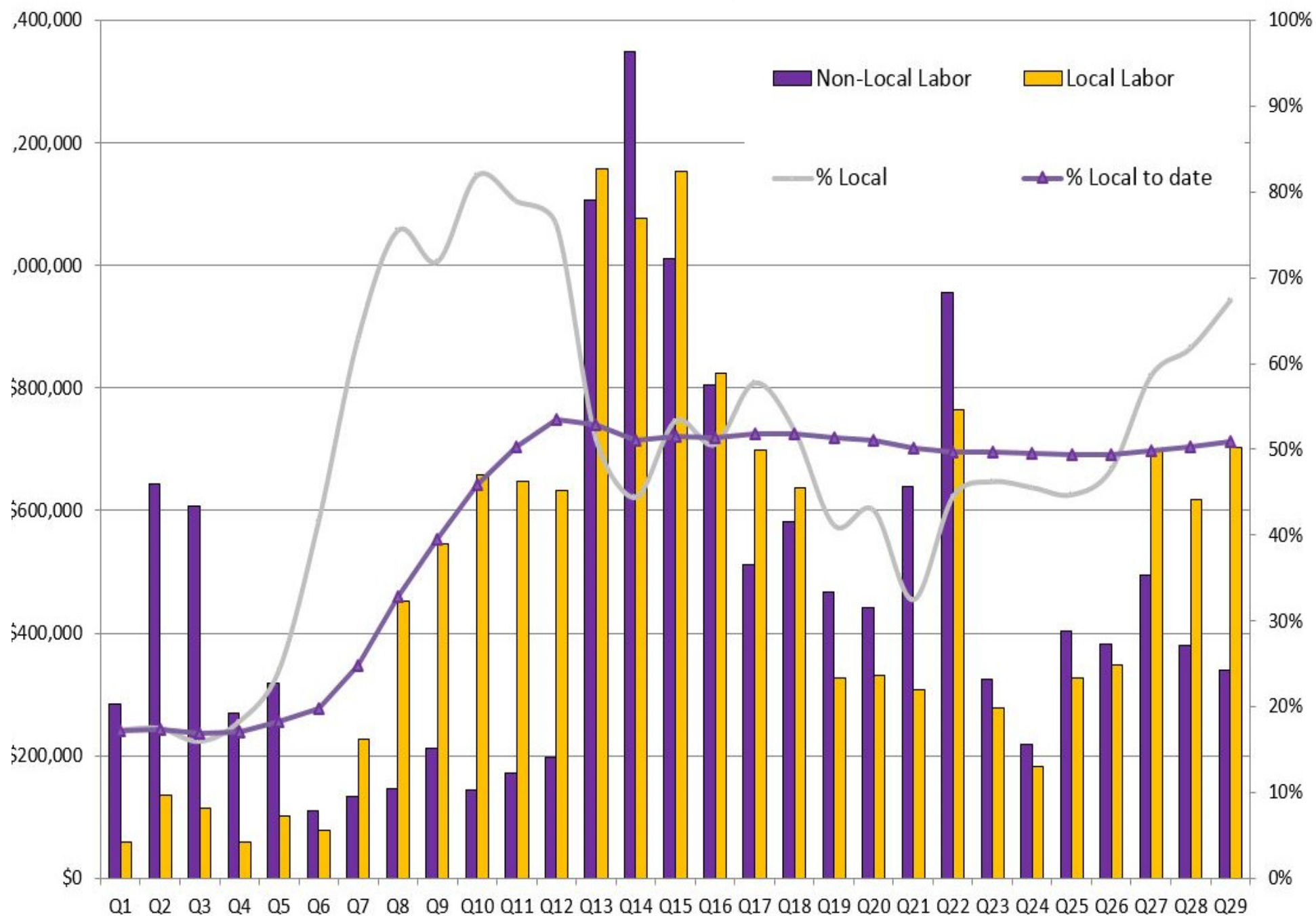
Agenda

- Life to date labor expenditures data
- Graphical representation of data
- Firm summary
- Questions



		Local Labor		Non-Local Labor		Total Labor	Expenses	Total Billing					
Q1	February 2009 to April 2009	\$	59,229.45	17%	\$	283,668.29	83%	\$	342,897.74	\$	4,204.07	\$	347,101.81
Q2	May 2009 to July 2009	\$	136,008.78	17%	\$	643,238.88	83%	\$	779,247.66	\$	10,964.35	\$	790,212.01
Q3	August 2009 to October 2009	\$	115,167.23	16%	\$	607,146.72	84%	\$	722,313.95	\$	17,699.52	\$	740,013.47
Q4	November 2009 to January 2010	\$	60,114.93	18%	\$	269,619.98	82%	\$	329,734.91	\$	5,683.89	\$	335,418.80
Q5	February 2010 to April 2010	\$	101,557.41	24%	\$	318,251.34	76%	\$	419,808.75	\$	15,336.32	\$	435,145.07
Q6	May 2010 to July 2010	\$	77,484.13	41%	\$	109,226.70	59%	\$	186,710.83	\$	6,956.80	\$	193,667.63
Q7	August 2010 to October 2010	\$	226,558.38	63%	\$	133,019.86	37%	\$	359,578.24	\$	13,134.47	\$	372,712.71
Q8	November 2010 to January 2011	\$	452,722.51	76%	\$	146,586.04	24%	\$	599,308.55	\$	11,793.22	\$	611,101.77
Q9	February 2011 to April 2011	\$	544,920.11	72%	\$	212,852.60	28%	\$	757,772.71	\$	17,956.28	\$	775,728.99
Q10	May 2011 to July 2011	\$	658,586.15	82%	\$	144,867.64	18%	\$	803,453.79	\$	23,204.33	\$	826,658.12
Q11	August 2011 to October 2011	\$	646,879.57	79%	\$	172,482.21	21%	\$	819,361.78	\$	24,546.58	\$	843,908.36
Q12	November 2011 to January 2012	\$	633,527.60	76%	\$	197,931.47	24%	\$	831,459.07	\$	25,226.57	\$	856,685.64
Q13	February 2012 to April 2012	\$	1,157,956.61	51%	\$	1,106,140.92	49%	\$	2,264,097.53	\$	37,562.06	\$	2,301,659.59
Q14	May 2012 to July 2012	\$	1,077,699.25	44%	\$	1,349,538.11	56%	\$	2,427,237.36	\$	40,266.14	\$	2,467,503.50
Q15	August 2012 to October 2012	\$	1,154,129.90	53%	\$	1,010,636.88	47%	\$	2,164,766.78	\$	38,919.57	\$	2,203,686.35
Q16	November 2012 to January 2013	\$	824,898.05	51%	\$	805,077.25	49%	\$	1,629,975.30	\$	29,873.31	\$	1,659,848.61
Q17	February 2013 to April 2013	\$	698,713.82	58%	\$	510,825.76	42%	\$	1,209,539.58	\$	17,271.46	\$	1,226,811.04
Q18	May 2013 to July 2013	\$	636,647.93	52%	\$	581,535.79	48%	\$	1,218,183.72	\$	10,411.85	\$	1,228,595.57
Q19	August 2013 to October 2013	\$	326,549.15	41%	\$	466,972.99	59%	\$	793,522.14	\$	52,593.37	\$	846,115.51
Q20	November 2013 to January 2014	\$	332,144.59	43%	\$	441,559.93	57%	\$	773,704.52	\$	54,761.21	\$	828,465.73
Q21	February 2014 to April 2014	\$	307,408.50	32%	\$	639,964.21	68%	\$	947,372.71	\$	25,876.93	\$	973,249.64
Q22	May 2014 to July 2014	\$	765,309.54	44%	\$	955,073.89	56%	\$	1,720,383.43	\$	27,813.45	\$	1,748,196.88
Q23	August 2014 to October 2014	\$	278,536.04	46%	\$	323,860.50	54%	\$	602,396.54	\$	28,249.60	\$	630,646.14
Q24	November 2014 to January 2015	\$	182,747.01	46%	\$	218,469.23	54%	\$	401,216.24	\$	14,178.47	\$	415,394.71
Q25	February 2015 to April 2015	\$	326,470.61	45%	\$	403,620.45	55%	\$	730,091.06	\$	19,216.01	\$	749,307.07
Q26	May 2015 to July 2015	\$	348,788.65	48%	\$	382,209.43	52%	\$	730,998.08	\$	7,950.87	\$	738,948.95
Q27	August 2015 to October 2015	\$	701,058.14	59%	\$	494,808.93	41%	\$	1,195,867.07	\$	25,303.44	\$	1,221,170.51
Q28	November 2015 to January 2016	\$	617,427.27	62%	\$	381,036.15	38%	\$	998,463.42	\$	24,337.73	\$	1,022,801.15
Q29	February 2016 to April 2016	\$	703,780.56	67%	\$	340,298.20	33%	\$	1,044,078.76	\$	26,170.88	\$	1,070,249.64
TOTAL		\$	14,153,021.87	51%	\$	13,650,520.35	49%	\$	27,803,542.22	\$	657,462.75	\$	28,461,004.97

CRRMA GEC Labor April 2016



Firm Summary



Updated through 4/31/2016

Firm	Local		Non-Local		Total Labor		Expenses	Total Billing	
Atkins	\$	4,901,624.07	43%	\$	6,436,597.56	57%	\$	11,338,221.63	41%
Jacobs	\$	1,389,040.67	18%	\$	6,456,359.43	82%	\$	7,845,400.10	28%
AIA Engineers	\$	2,948,701.88	94%	\$	188,029.79	6%	\$	3,136,731.67	11%
ECM International	\$	2,847,674.14	100%	\$	-	0%	\$	2,847,674.14	10%
Brock & Bastillos	\$	1,112,587.80	100%	\$	-	0%	\$	1,112,587.80	4%
Moreno Cardenas Inc.	\$	404,694.26	100%	\$	-	0%	\$	404,694.26	1%
HKN Engineers	\$	182,101.10	100%	\$	-	0%	\$	182,101.10	1%
TXP, Inc.	\$	-	0%	\$	212,500.00	100%	\$	212,500.00	1%
Fagan Consulting	\$	-	0%	\$	263,131.32	100%	\$	263,131.32	1%
CQC Testing & Engineering	\$	205,462.80	100%	\$	-	0%	\$	205,462.80	1%
Flores Media Consulting	\$	7,275.00	100%	\$	-	0%	\$	7,275.00	0%
Lopez Marketing Group	\$	36,775.15	100%	\$	-	0%	\$	36,775.15	0%
Rich and Associates	\$	-	0%	\$	33,885.25	100%	\$	33,885.25	0%
Pat Louthan	\$	-	0%	\$	53,600.00	100%	\$	53,600.00	0%
Suzanne Michaels Comm	\$	30,975.00	100%	\$	-	0%	\$	30,975.00	0%
L&P Scientific Consulting	\$	725.00	100%	\$	-	0%	\$	725.00	0%
Viva + Impulse Creative Co.	\$	9,125.00	100%	\$	-	0%	\$	9,125.00	0%
Barracuda Public Relations	\$	76,260.00	100%	\$	-	0%	\$	76,260.00	0%
Anderson	\$	-	0%	\$	6,417.00	100%	\$	6,417.00	0%
TOTAL	\$	14,153,021.87	51%	\$	13,650,520.35	49%	\$	27,803,542.22	\$
								657,462.75	\$
								28,461,004.97	

Questions?



Camino Real Regional Mobility Authority

300 N. Campbell, 2nd Floor

El Paso, Texas 79902

(915) 212-1072

info@crrma.org

www.crrma.org

