

SUSAN A. MELENDEZ
CHAIR

JOE D. WARDY
VICE CHAIR

LES PARKER
TREASURER

JOE R. FERNANDEZ
SECRETARY



DAVID C. NEMIR
ALTERNATE SECRETARY

YOLANDA GINER
MEMBER

JOE FERNANDEZ
MEMBER

RAYMOND L. TELLES
EXECUTIVE DIRECTOR

TO: CRRMA Board of Directors
FROM: Raymond L. Telles, Executive Director
DATE: July 13, 2016
RE: César Chávez Express Toll Lanes
Performance Report – 3rd Quarter of FY16

Board Members,

This performance report for the César Chávez Express Toll Lanes includes transaction and revenue data for the period from the opening date (January 10, 2014) through the end of the CRRMA's 3rd quarter of fiscal year 2016 (period ending May 31, 2016).

On the following page, you will find a table that summarizes the performance metrics found graphically on the subsequent pages. As noted in prior reports, this format presents annualized projected revenues and transaction figures, as opposed to the month-to-month format previously used in these reports. For this report, we have also included information on the Veterans Waiver Program as well as information on project revenue and expenses. As always, please let me know of any changes to format or content that you would like to see in future reports.

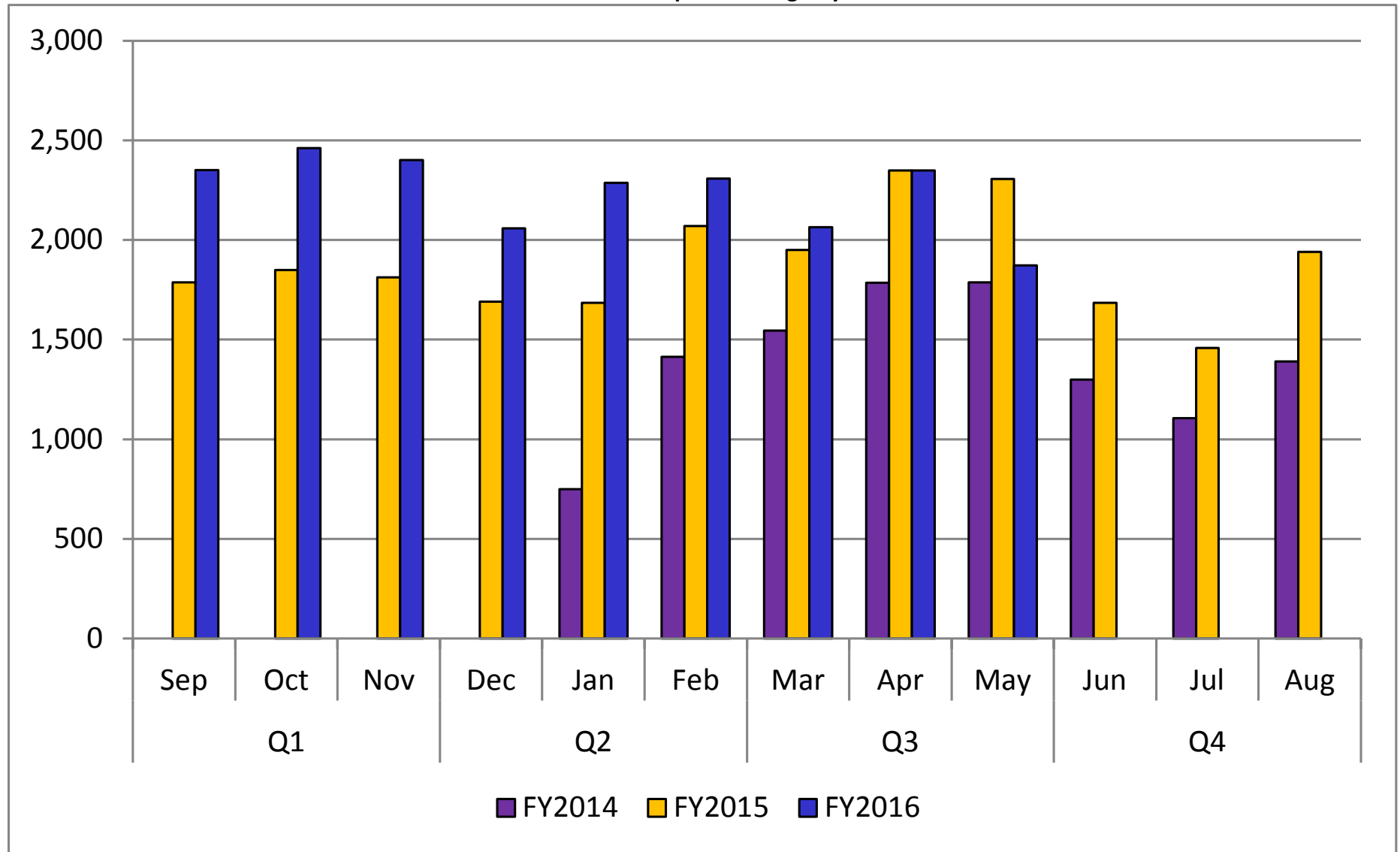
As in the past, a representative of the CRRMA's general engineering consultant will present this information in greater detail during the Board meeting and will be available for questions. Please also let me know of any questions that you may have.

July 2016 Performance Report

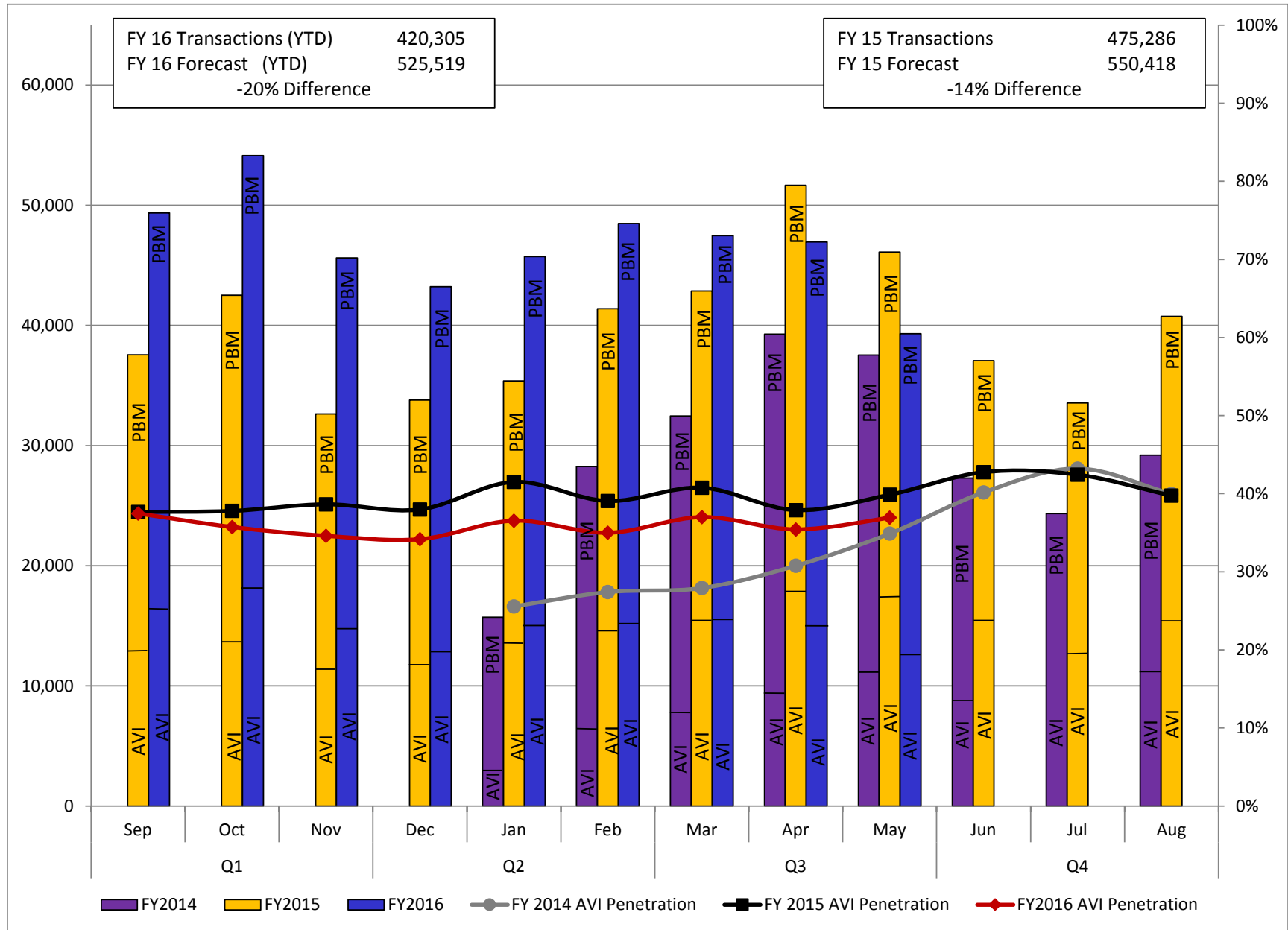
Year	Month	Tags Issued	Accounts Created	AVI		PBM		Total Gross Revenue Collected	Transactions per Working Day
				Transactions	Gross Revenue Collected	Transactions	Gross Revenue Collected		
FY 14	January*	471	294	2,845	\$ -	12,878	\$ -	\$ -	749
	February	117	89	6,329	\$ -	21,926	\$ -	\$ -	1,413
	March	94	73	7,459	\$ 1,377	25,001	\$ 5,386	\$ 6,763	1,546
	April	172	125	9,920	\$ 3,155	29,351	\$ 9,388	\$ 12,544	1,785
	May	124	103	10,841	\$ 4,292	26,696	\$ 15,097	\$ 19,389	1,787
	June	76	63	9,335	\$ 5,724	17,961	\$ 21,891	\$ 27,614	1,300
	July	298	71	9,486	\$ 6,165	14,852	\$ 16,624	\$ 22,790	1,106
	August	140	90	10,516	\$ 4,757	18,685	\$ 13,413	\$ 18,171	1,391
FY 15	September	84	70	12,876	\$ 5,020	24,672	\$ 12,789	\$ 17,809	1,788
	October	100	78	13,788	\$ 5,265	28,726	\$ 11,424	\$ 16,689	1,848
	November	89	68	11,587	\$ 6,177	21,043	\$ 15,892	\$ 22,070	1,813
	December	76	59	11,725	\$ 7,766	22,073	\$ 26,725	\$ 34,491	1,690
	January	56	47	13,273	\$ 5,928	22,107	\$ 19,491	\$ 25,420	1,685
	February	81	67	14,682	\$ 5,994	26,711	\$ 18,539	\$ 24,533	2,070
	March	87	70	15,477	\$ 5,897	27,401	\$ 21,580	\$ 27,476	1,949
	April	72	63	17,348	\$ 7,868	34,313	\$ 17,321	\$ 25,188	2,348
	May	94	73	16,304	\$ 7,707	29,808	\$ 20,059	\$ 27,766	2,306
	June	73	58	14,244	\$ 7,492	22,822	\$ 26,517	\$ 34,009	1,685
	July	84	73	12,642	\$ 10,031	20,904	\$ 18,881	\$ 28,912	1,459
	August	87	71	14,540	\$ 6,985	26,220	\$ 22,329	\$ 29,314	1,941
FY16	September	105	89	16,624	\$ 6,266	32,742	\$ 19,407	\$ 25,673	2,351
	October	92	74	17,508	\$ 7,614	36,633	\$ 17,840	\$ 25,454	2,461
	November	115	99	14,075	\$ 7,197	31,541	\$ 21,457	\$ 28,653	2,401
	December	99	79	13,059	\$ 8,451	30,162	\$ 22,172	\$ 30,623	2,058
	January	122	104	14,708	\$ 6,004	31,028	\$ 14,114	\$ 20,118	2,287
	February	116	103	14,804	\$ 6,227	33,677	\$ 19,607	\$ 25,834	2,309
	March	107	90	15,094	\$ 7,014	32,387	\$ 23,582	\$ 30,596	2,064
	April	101	83	14,703	\$ 6,792	32,248	\$ 22,779	\$ 29,570	2,348
	May	86	75	12,545	\$ 7,333	26,767	\$ 33,989	\$ 41,323	1,872
TOTALS		3,418	2,501	368,337	\$ 170,497	761,335	\$ 508,295	\$ 678,792	1,855

*NOTES: (1) The César Chávez Express Toll Lanes opened on January 10, 2014. (2) Figures provided in the January “Tags Issued” and “Accounts Created” rows include December 2013 activity. (3) The yellow box in the Transactions per Working Day column denotes the average and not a total.

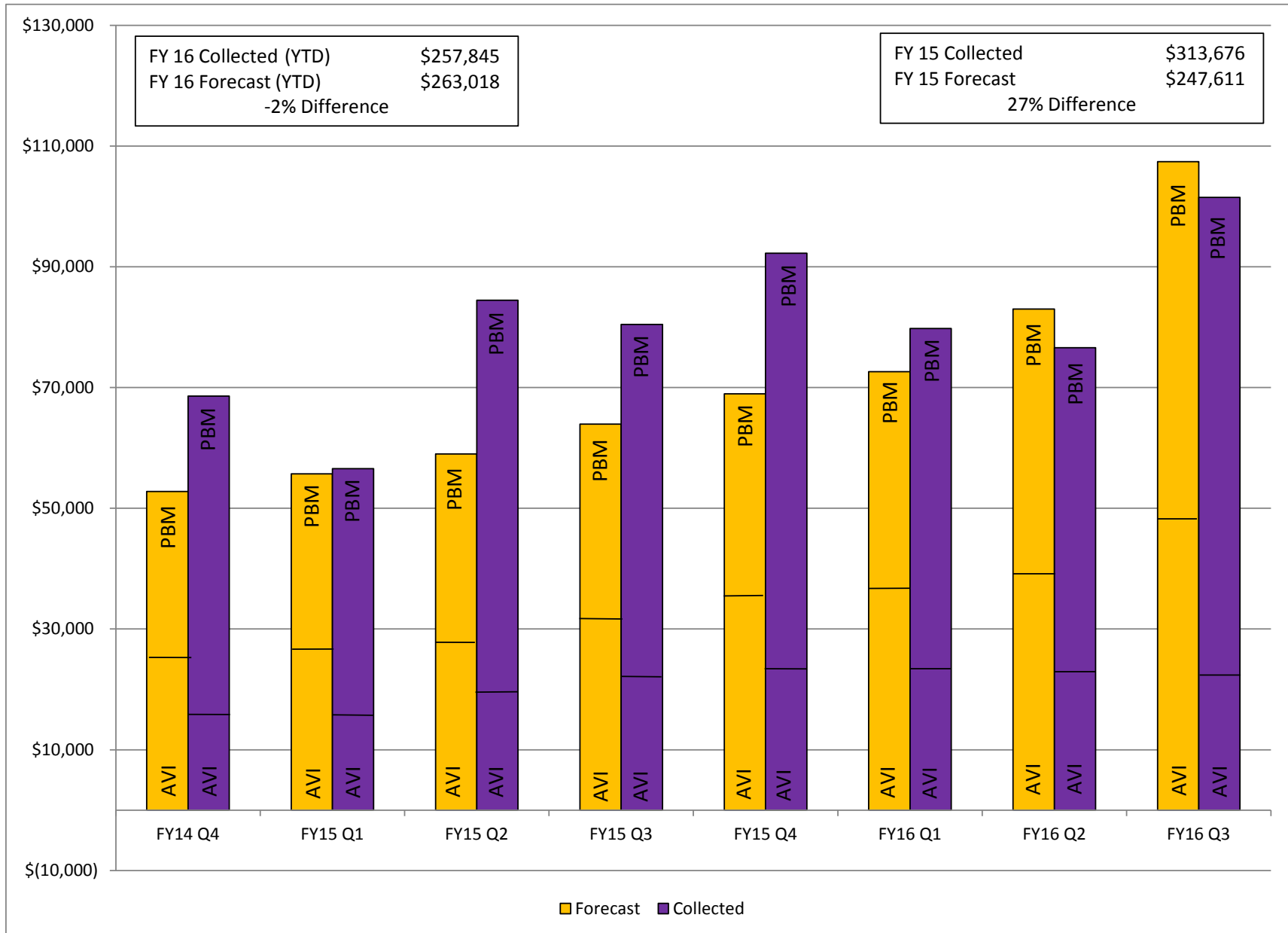
Transactions per Working Day



Transactions



Revenue



Veteran Toll Waiver Program

Year	Month	Tags Issued	Vet Transactions	% of Total Transactions
FY16	Oct	13	-	-
	Nov	32	297	0.8%
	Dec	15	665	1.7%
	Jan	3	704	1.5%
	Feb	11	744	1.6%
	Mar	10	984	1.9%
	Apr	11	787	1.7%
	May	7	939	2.0%
Total		102	5,120	1.61%

Revenue and Expenses

Fiscal Year	Actuals	
	Revenue	Expenses
2014	\$ 107,271	\$ 346,298
2015	\$ 313,676	\$ 496,317
2016	\$ 257,845	\$ 387,997
Totals	\$ 678,792	\$ 1,230,612