



CAMINO REAL
REGIONAL MOBILITY
AUTHORITY

CRRMA BOARD PRESENTATION

El Paso Streetcar Project Construction Status Report

**Gilbert Gardner
August 10, 2016**

El Paso Streetcar Project Status Report



AGENDA



- Infrastructure Update
- Construction Update
- PCC Vehicle Remanufacture
- Implementation and Operations Plan Development
- Community Involvement
- Construction Management
- Questions

Infrastructure Update



• Contract Sum	\$ 61,476,282.20
• Total Completed to Date	\$ 15,088,191.97
• Percent Completed to Date	24.54%
• Work Breakdown	
— Base Bid 1 – Civil Track MSF	\$ 10,809,123.19
— Base Bid 2 – Wastewater Repl	\$ 555,993.71
— Base Bid 3 – Potable Water Repl	\$ 2,768,373.50
— Base Bid 4 – CBD4	\$ 646,710.41
— Change Orders	\$ 307,991.16

Construction Update

- The Maintenance and Storage Facility (MSF) is currently on schedule
 - Building foundation was completed at the MSF site
 - Steel erection began in July



Construction Update



Construction Update

- Placement of Overhead Catenary System (OCS) pole foundations is nearing 50% complete
- Traction Power Substation (TPSS) conduits are installed at TPSS A1, A3 and are in progress at TPSS A2



Construction Update

- All major rail components are now in El Paso (3 main shipments)
- The placement of track is underway on Oregon, near UTEP and on Kansas, from Paisano to Father Rahm
- Additional track placement has just begun on Santa Fe from Paisano to Franklin
- 4,330 linear feet (16%) of embedded track has been installed as of August 6



Construction Update



- The jack and bore under Mesa was completed late July
 - connects TPSS A2 to Oregon and Stanton
- Base Bid 2 & 3 water line and sanitary sewer work is approximately 90% complete
 - Water line replacement continues on Stanton
 - Sewer line replacement continues on Santa Fe and Oregon

Construction Update



- Father Rahm Avenue and Kansas Street work is approximately 40% complete
 - Storm drain replacement work in this area resumed at the end of July following redesigns by City consultants
 - Embedded Track Construction is complete on Kansas, South of Paisano
- The first complete section of roadway/track is scheduled to reopen end of August (Oregon – from University to Shuster)
- OCS work will occur at a later time, with minimal traffic impact

PCC Vehicle Remanufacture



PCC Vehicle Remanufacture



- Contractor: Brookville Equipment Corporation (BEC)
- Contract was executed on October 15, 2015
- Contract value at award: \$18,794,265.00
 - Change Orders: \$ 77,872.75
 - Current contract value: \$ 18,872,047.10
 - Invoiced to date: \$ 6,667,658.10
- Work includes six vehicles, system support, training and spare parts

PCC Vehicle Remanufacture



- Amendment #1
 - Done on April 13, 2016
 - The amendment is for \$77,872.75
 - Addresses numerous items including openable windows
- Six vehicles are at BEC for remanufacturing
 - Car bodies are in very good condition
- Two vehicles were stripped to bare metal and are ready for grit blasting

PCC Vehicle Remanufacture

Car #1 - 1506

Car #2 - 1512

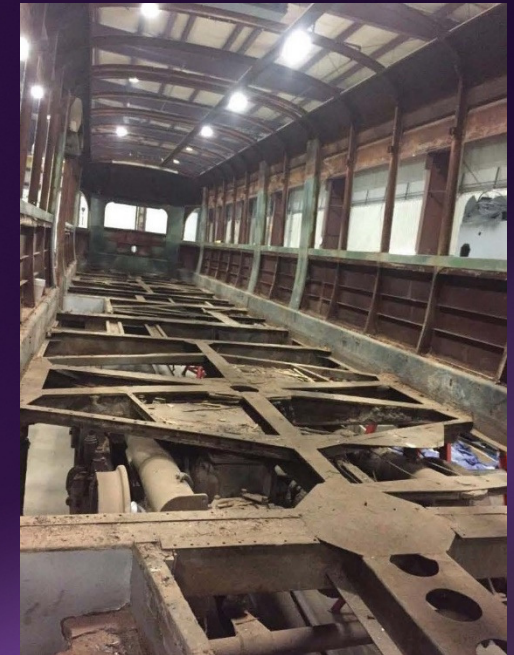
Car #3 - 1504

Car #4 - 1514

Car #5 - 1515

Car #6 - 1511

Car #7 - 1513 (option)



PCC Vehicle Remanufacture



- Design process is well underway
- Work is on schedule
- The next face-to-face design review meeting is scheduled for September
- Delivery of vehicles for testing is scheduled for Dec 2017 - July 2018

PCC Vehicle Remanufacture

- The designs for the integration of these items are progressing as planned:
 - Wheelchair lift
 - HVAC
 - Pantographs
 - Propulsion
 - Brake systems



Implementation & Operations Plans Development



- Four manuals submitted to Sun Metro and CM team for review
- Assistant Director Of Streetcar Operations for Sun Metro – leading the document review team
- Sun Metro to take the lead on completion of Implementation & Operations Plans Development

Community Involvement



- Recent presentations to neighborhood, civic and professional organizations:
 - Texas Society of Professional Engineers
 - American Council of Engineering Companies
 - Greater El Paso Chamber of Commerce
 - Kern Place Association
 - Central Business Association
- Issued weekly e-newsletters and provided regular updates to Facebook and Instagram, including the production and posting of videos explaining street closures and lane restrictions

Community Involvement



- Held weekly stakeholder and special event coordination meetings
- Held monthly messaging meeting with Border West Expressway, Go10, and TxDOT
- Managed the project Hotline (844) 252-RAIL (7245)
- Issued bilingual door to door notifications:
 - Kansas Street
 - El Paso Street
 - Kansas Street
 - Santa Fe Street
 - Chihuahueta Historic District

Community Involvement



- Developed Comprehensive Closure Map, which was distributed in news releases, e-newsletters, and stakeholder meeting agendas

Construction Management



- Submittals
 - 284 received up to date
 - 248 are closed, 36 are being processed
 - Estimated total of 1,746 Submittals and Deliverables
- Requests for Information (RFIs)
 - 238 received up to date
 - 233 are closed, 5 are being processed
- Pay Requests
 - 7 received to date
 - 7 processed and paid to date

Questions?



Camino Real Regional Mobility Authority
300 N. Campbell, 2nd Floor
El Paso, Texas 79902
(915) 212-1072



info@crrma.org
www.crrma.org

