



CRRMA Regional Toll Implementation Plan

Initial Findings

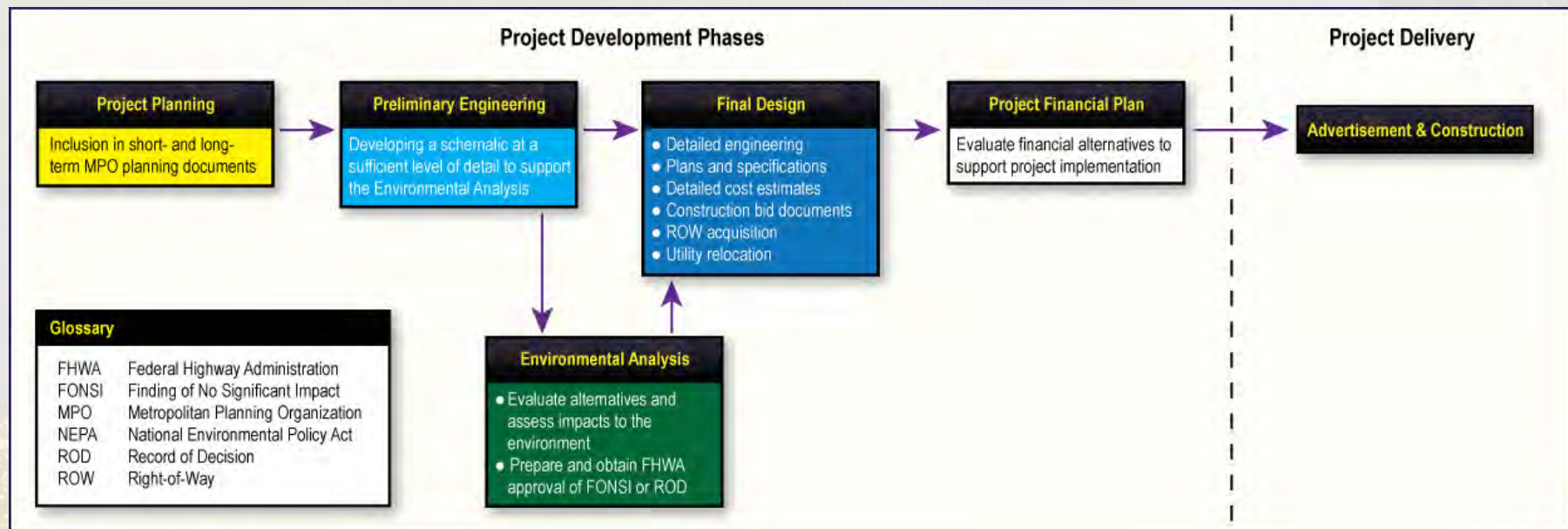
Kay McKinley
PBS&J
19 February 2010

Initial Findings

- Presentation Overview
 - Project Development/Delivery Process
 - Regulatory Governance Overview
 - EP Metropolitan Planning Organization (EPMPO)
 - National Environmental Policy Act (NEPA)
 - 2008 CMP Toll Projects
 - Project Cost Estimates
 - Toll Implementation Schedule
 - Market Valuation
 - Financial Plan



Project Development/Delivery Process



Regulatory Governance Overview

- Federal US DOT
 - Federal Highway Administration (FHWA)
 - Metropolitan Planning Organization (MPO)
 - National Environmental Policy Act (NEPA)



EP Metropolitan Planning Organization

- EPMPO: regional multi-modal policy, planning, and funding conduit
- Regional transportation plans – fiscally constrained
 - Long-range transportation plan (LRTP)
 - Transportation Improvement Plan (TIP)
 - Unified Plan Work Program (UPWP)
- 2008 Comprehensive Mobility Plan (CMP)

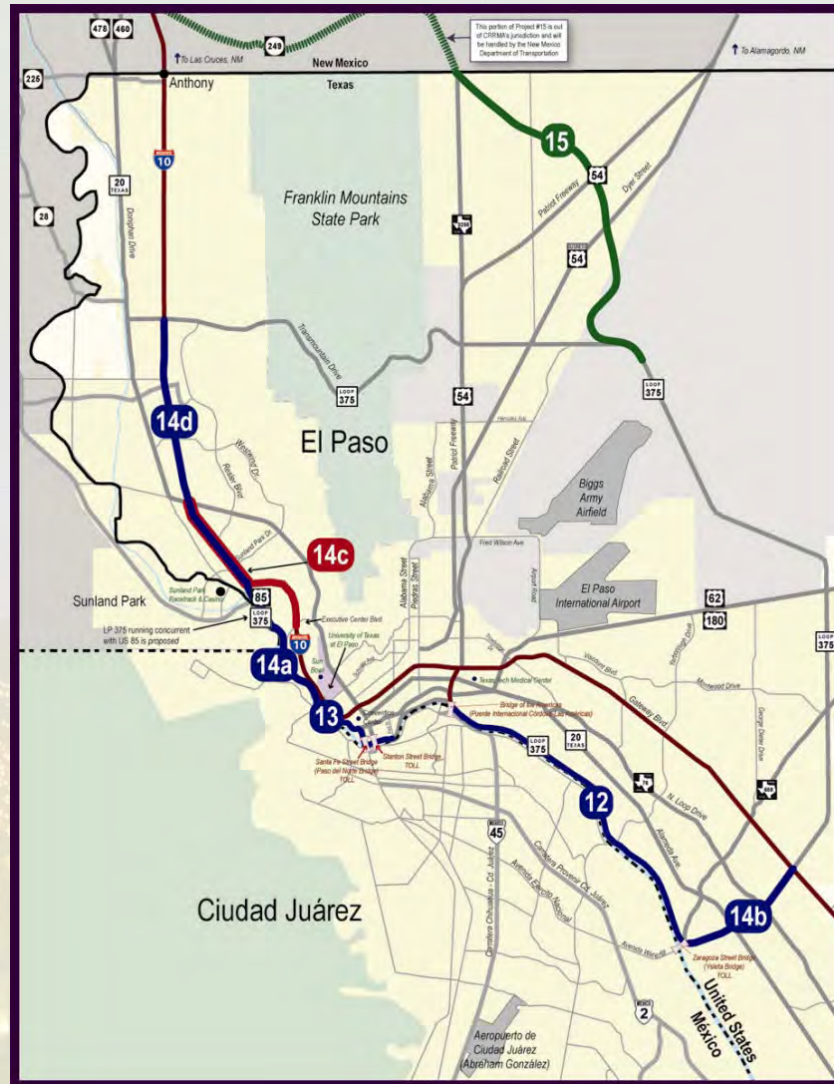


National Environmental Policy Act (NEPA)

- Federal funding subject to NEPA regulations
- NEPA Levels
 - Categorical Exclusion (CE)
 - Environmental Analysis (EA)
 - Finding of No Significant Impact (FONSI) OR
 - Environmental Impact Statement (EIS)
 - EIS study
- Regional toll network analysis (Jan. 2009)



CMP 2008 Toll Projects Location Map



CMP Toll Project Descriptions



2008 Comprehensive Mobility Plan - Updated

JANUARY 2010 - DRAFT

El Paso District



UPDATES LEGEND:

January-10
November-09
October-09
April-09

(In Millions)

C&I	Proj #	HIGHWAY	DESCRIPTION	Ready to Let Year	Original Total Project Cost (YOE)	Cat 1 Preventive Maint. & Rehab.	Cat 2 Metro Area Corridor Projects	Cat 5 CMAQ	Cat 7 STP Metro Mobility	Cat 10 Misc.	Cat 11 District Discr.	CBI Coord. Border Infrastr.	Estim. TRZ Bond	Estim. Toll Revenue Bond	ARRA TTC	ARRA MPO	Prop 14	Prop 12	Other TBD	Comments	Project Developer																				
																						subtotal (1)	\$403.0	\$10.0	\$90.0	\$0.0	\$20.0	\$6.5	\$9.0	\$26.5	\$65.0	\$0.0	\$75.0	\$21.0	\$0.0	\$80.0	\$0.0				
	3392-01-033	LP 375 (Woodrow Bean Transmountain West)	I-10 to State Park, widen from 2 to 4 lane divided. With grade separations at major streets, 2 direct connects and frontage roads	2011	\$80.0		\$0.0					\$0.0						\$80.0		Pending approval TPB 1-2010 TPB 10-2-09	TxDOT																				
	3121-02-123	I-10 @ UTEP	Interchange improvements	2010	\$12.0		\$0.0			\$0.5		\$11.5								TPB 10-2-09	TxDOT																				
	3392-01-038	LP 375 (Woodrow Bean Transmountain Northeast)	Dyer to US 54, build 4 main lanes - including interchange underpass at US 54	2011	\$80.0		\$60.0					\$0.0	\$20.0							TPB 4-3-09 TPB 10-2-09	CRRMA																				
	0874-01-037	FM 76 (North Loop)	City limits to FM 1281 widen from 2 to 4 lanes	2011	\$17.0	\$8.0					\$9.0										TxDOT																				
	3392-05-034	LP 375 @ FM 659	Interchange improvements, incl'd 2 connectors	2011	\$32.0		\$17.0						\$15.0								CRRMA																				
	2121-04-095, etc.	I-10 @ LP 375 (Americas)	Build 2connectors (out of 8) Original CMP	2010	\$50.0		\$5.0					\$15.0	\$30.0		\$0.0					TPB 4-3-09 TPB 10-2-09	CRRMA																				
	3121-04-092		Build 2connectors (out of 8) ARRA Project	2010	\$60.0									\$75.0	\$21.0					TPB 4-3-09 TPB 10-2-09	CRRMA																				
	8050-24-001, etc.	Horizon / Buford	FM 76 to SH 20 widening from 2 to 4 lanes	2012	\$9.0	\$2.0	\$3.0		\$4.0												TxDOT																				
	0909-01-001	SPUR 276 (LP 375 Re-alignment)	From north of Borderland to west of I-10	2011	\$27.0		\$5.0		\$18.0	\$6.0									\$0.0		TxDOT																				
subtotal (1)																						\$403.0	\$10.0	\$90.0	\$0.0	\$20.0	\$6.5	\$9.0	\$26.5	\$65.0	\$0.0	\$75.0	\$21.0	\$0.0	\$80.0	\$0.0					
Transit																																									
	0001-02-054	SH 20 (Mesa) - Phase I	SH 20 (Mesa) From Donphan to UTEP	2010	\$25		\$23	\$2													City of El Paso																				
	0374-02-099	US 62/180 (Montana) - Phase I	US 62/180 (Montana) from Hueco Club Park to Airway	2011	\$2		\$2	\$0													City of El Paso																				
subtotal																						\$27	\$0	\$25	\$2	\$0	\$0	\$0	\$0	\$0	\$0	\$0	\$0	\$0	\$0	\$0	\$0	\$0	\$0		
Aesthetics/Highway Improvements																																									
	3121-01-080	I-10	I-10 from LP 375 (Transmountain) to LP 375 (Joe Battle/Americas)	2010	\$10		\$5						\$5								CRRMA																				
subtotal																						\$10	\$0	\$5	\$0	\$0	\$0	\$0	\$0	\$0	\$0	\$5	\$0	\$0	\$0	\$0	\$0	\$0	\$0		
Non-Toll Projects Total (1)																						\$440.0	\$10.0	\$120.0	\$2.0	\$20.0	\$6.5	\$9.0	\$26.5	\$70.0	\$0.0	\$75.0	\$21.0	\$0.0	\$80.0	\$0.0					
CRRMA																																									
	2002-04-029	PHASE I Southern Corridor LP375 (Cesar Chavez)	Add 2 express toll lanes	2011	\$70					\$5								\$74		TPB 4-3-09	CRRMA																				
	2002-04-027	PHASE II Southern Corridor LP 375 (Keystone BHW Extension Part1)	Build 4-lane toll connection (Park to Schuster). Schuster Re-alignment with connection to I-10 and Loop 375.	TBD	\$226		\$151														CRRMA																				
	2002-04-030	PHASE III Southern Corridor LP 375 (BHW Extension Part 2 and Americas)	Build 4-lane elevated toll (Schuster to I-10 at Sunland Interchange) & add 2 express toll lanes at Americas (Zaragoza to I-10).	TBD	\$426								\$250						\$281		CRRMA																				
	2002-03-002	I-10 (CD lanes, Sunland Park In I P)	Collector Distributor Lanes (Mesa to Sunland Park)	TBD																	CRRMA																				
	2121-02-001 (CD)		Add 2 toll express lanes (Sunland Park Interchange to Loop 375 Transmountain)	TBD	\$30		\$0							\$0							CRRMA																				
	2121-01-002		Right of Way acquisition for ultimate design	TBD	\$30		\$0							\$0							CRRMA																				
	0024-05-138	Northeast Parkway	Right of Way acquisition for ultimate design	TBD	\$30		\$0							\$0							CRRMA																				
RMA Total																						\$761	\$0	\$151	\$0	\$0	\$5	\$0	\$0	\$0	\$0	\$0	\$250	\$75	\$0	\$74	\$0	\$281			

Note (1): Subtotals reflect sum of construction costs for some project and total project cost for others.



MTP 2035 Plan CMP Projects

- CMP Toll Projects EPMPO 2035 MTP Plan
 - Project 12 – Cesar Chavez (FONSI 2009)
 - Project 15 – Northeast Parkway
- CMP Toll Projects in 2035 MTP – not as toll
 - Project 13
 - Project 14b (MPO 2010 update as toll)
 - Project 14d



MTP 2035 CMP Toll Projects (cont.)

- CMP non-tolled project in MTP plan
 - Project 14c (collector/distributor)
- CMP tolled project not in MTP
 - Project 14a



EPMPO Funds for CMP Financing

- \$79M from 2010 to 2011
- \$151M from 2012 to 2020



Project Cost Estimates (2009\$)

Project	Phase	Cost	Project	Phase	Cost
12	Planning	COMPLETED	14C	Planning	COMPLETED
	Preliminary Engineering	COMPLETED		Preliminary Engineering	\$1,250,000
	Environmental Analysis	COMPLETED		Environmental Analysis	\$1,753,000
	Final Design & Project Delivery*	\$105,585,157		Final Design & Project Delivery*	\$152,834,049
	Total	\$105,585,157		Total	\$155,837,049
13/14A	Planning	\$0**	14D	Planning	\$0**
	Preliminary Engineering	\$5,496,000		Preliminary Engineering	\$5,463,000
	Environmental Analysis	\$3,972,000		Environmental Analysis	\$512,000
	Final Design & Project Delivery*	\$683,315,050		Final Design & Project Delivery*	\$220,351,359
	Total	\$692,783,050		Total	\$226,326,359
14B	Planning	\$0**	15	Planning	COMPLETED
	Preliminary Engineering	\$762,000		Preliminary Engineering	COMPLETED
	Environmental Analysis	\$72,000		Environmental Analysis	\$0**
	Final Design & Project Delivery*	\$32,465,964		Final Design & Project Delivery*	\$312,806,450
	Total	\$33,299,964		Total	\$312,806,450

*Includes final design, right-of-way, utility and construction costs

**No CRRMA funds required to complete. Costs to be incurred by others



CMP Financing Scenarios

- Financing scenarios assume full funding for development and construction of Projects 12 and 14b



Project Finance Scenario 1

SCENARIO 1: PROJECT 15 RIGHT-OF-WAY ACQUISITION IDENTIFIED FUNDS

	FUNDING CONSTRAINED SCHEDULE										
	STAGE 1 \$79 MILLION		STAGE 2 \$151 MILLION								
	2010	2011	2012	2013	2014	2015	2016	2017	2018	2019	2020
PROJECT 12											
PROJECT 13/14A											
PROJECT 14B											
PROJECT 14C											
PROJECT 14D											
PROJECT 15											
STAGE 1 AVAILABLE FUNDS	\$79.0	\$69.4	\$0.0	\$0.0	\$0.0	\$0.0	\$0.0	\$0.0	\$0.0	\$0.0	\$0.0
STAGE 2 AVAILABLE FUNDS	NA	NA	\$151.0	\$76.8	\$36.5	\$0.4	\$0.0	\$12.0	\$12.0	\$12.0	\$12.0
FUNDS NEEDED FOR PROJECT 12	\$9.6	\$105.8	\$36.4 *								
FUNDS NEEDED FOR PROJECT 14B			\$1.3	\$3.7	\$36.1	\$0.4					
FUNDS NEEDED FOR PROJECT 15			\$36.5	\$36.6			\$12.0				
TOTAL FUNDS NEEDED	\$9.6	\$105.8	\$74.2 *	\$40.3	\$36.1	\$0.4	\$12.0				
STAGE 1 FUNDS REMAINING	\$69.4	\$0.0	\$0.0	\$0.0	\$0.0	\$0.0	\$0.0	\$0.0	\$0.0	\$0.0	\$0.0
STAGE 2 FUNDS REMAINING	NA	NA	\$76.8	\$36.5	\$0.4	\$0.0	\$0.0	\$0.0	\$0.0	\$0.0	\$0.0
SHORTFALL		\$36.4					\$12.0	\$12.0	\$12.0	\$12.0	\$12.0

NA - FUNDS NOT AVAILABLE UNTIL 2012

*\$36.4M SHORTFALL FROM 2011 FOR PROJECT 12 CARRIED OVER AND COVERED BY FUNDS AVAILABLE IN 2012.

NOTES:

1. REPRESENTS INFLATED COSTS BASED ON YEAR ACTIVITY INCURRED. ESTIMATES WERE PREPARED IN 2009 DOLLARS. ANNUAL INFLATION RATES USED TO ESTIMATE FUTURE COSTS ARE AS FOLLOWS: 10% FOR RIGHT-OF-WAY, 5% FOR UTILITIES AND CONSTRUCTION AND 3.5% FOR ALL OTHERS (I.E. PRELIMINARY ENGINEERING, ENVIRONMENTAL, FINAL DESIGN & CE&I).



Project Finance Scenario 2

SCENARIO 2: PROJECT 14C (MODIFIED DESIGN) DEVELOPMENT IDENTIFIED FUNDS

	FUNDING CONSTRAINED SCHEDULE										
	STAGE 1 \$79 MILLION		STAGE 2 \$151 MILLION								
	2010	2011	2012	2013	2014	2015	2016	2017	2018	2019	2020
PROJECT 12											
PROJECT 13/14A			NO FUNDING FOR PROJECT DEVELOPMENT ACTIVITIES								
PROJECT 14B											
PROJECT 14C											
PROJECT 14D			NO FUNDING FOR PROJECT DEVELOPMENT ACTIVITIES								
PROJECT 15			NO FUNDING FOR PROJECT DEVELOPMENT ACTIVITIES								
STAGE 1 AVAILABLE FUNDS	\$79.0	\$69.4	\$0.0	\$0.0	\$0.0	\$0.0	\$0.0	\$0.0	\$0.0	\$0.0	\$0.0
STAGE 2 AVAILABLE FUNDS	NA	NA	\$151.0	\$110.0	\$105.9	\$62.4	\$58.0	\$55.7	\$0.0	\$0.0	\$0.0
FUNDS NEEDED FOR PROJECT 12	\$9.6	\$105.8	\$36.4 *								
FUNDS NEEDED FOR PROJECT 14B			\$1.3	\$3.7	\$36.1	\$0.4					
FUNDS NEEDED FOR PROJECT 14C			\$3.4	\$0.4	\$7.5	\$4.0	\$2.4	\$161.0	\$0.4	\$0.4	\$0.3
TOTAL FUNDS NEEDED	\$9.6	\$105.8	\$41.1 *	\$4.1	\$43.6	\$4.4	\$2.4	\$161.0	\$0.4	\$0.4	\$0.3
STAGE 1 FUNDS REMAINING	\$69.4	\$0.0	\$0.0	\$0.0	\$0.0	\$0.0	\$0.0	\$0.0	\$0.0	\$0.0	\$0.0
STAGE 2 FUNDS REMAINING	NA	NA	\$110.0	\$105.9	\$62.4	\$58.0	\$55.7	\$0.0	\$0.0	\$0.0	\$0.0
SHORTFALL		\$36.4						\$105.3	\$105.7	\$106.0	\$106.3

NA - FUNDS NOT AVAILABLE UNTIL 2012

*\$36.4M SHORTFALL FROM 2011 FOR PROJECT 12 CARRIED OVER AND COVERED BY FUNDS AVAILABLE IN 2012.

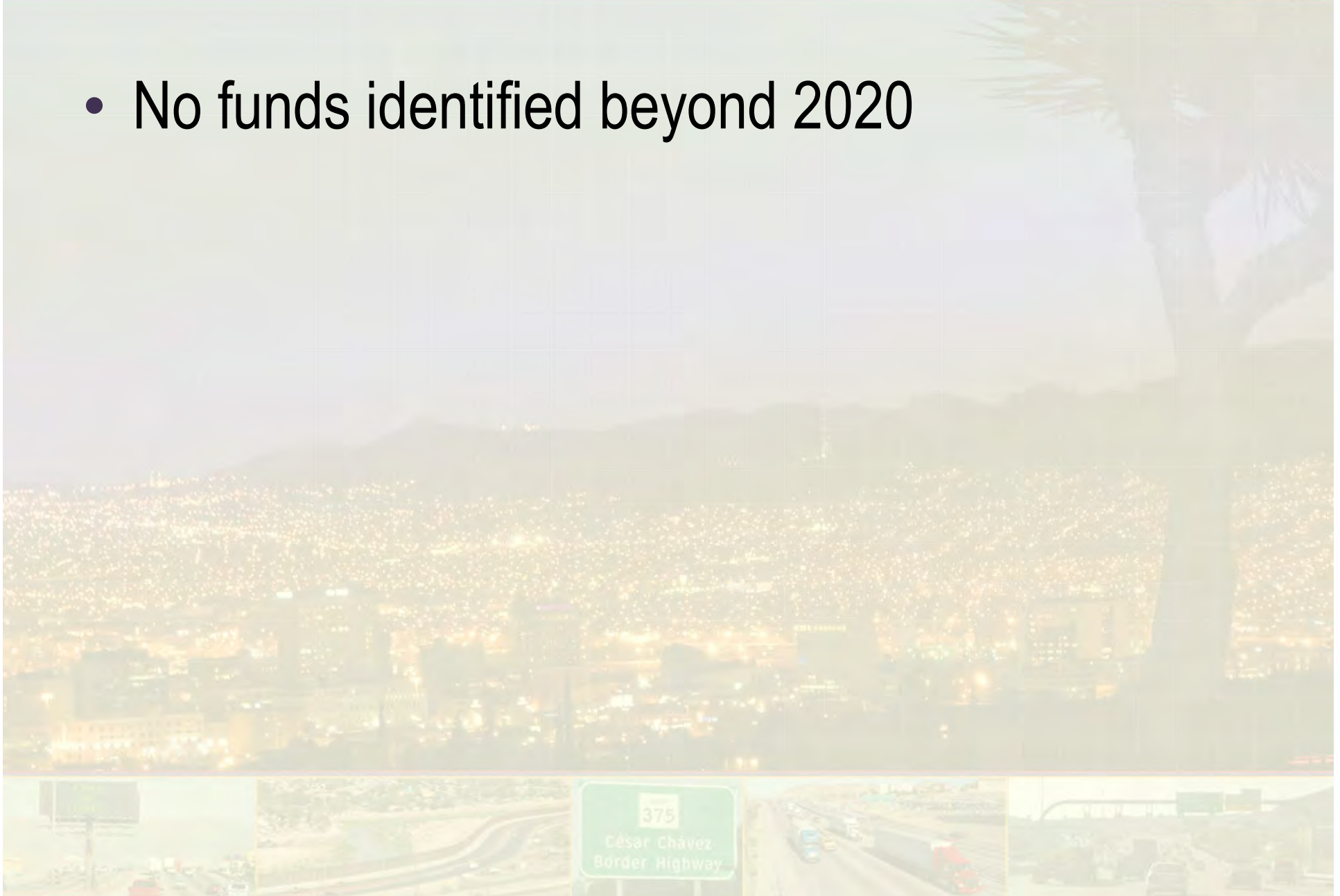
NOTES:

1. REPRESENTS INFLATED COSTS BASED ON YEAR ACTIVITY INCURRED. ESTIMATES WERE PREPARED IN 2009 DOLLARS. ANNUAL INFLATION RATES USED TO ESTIMATE FUTURE COSTS ARE AS FOLLOWS: 10% FOR RIGHT-OF-WAY, 5% FOR UTILITIES AND CONSTRUCTION AND 3.5% FOR ALL OTHERS (I.E. PRELIMINARY ENGINEERING, ENVIRONMENTAL, FINAL DESIGN & CE&I).



Future Funding Needs for CMP Projects

- No funds identified beyond 2020



Project 12 – Market Valuation

- SB 792 toll project market valuation
- TxDOT and CRRMA financial analysis
- Estimated revenues/cost – 52 year analysis
 - Capital (development/construction)
 - Life cycle (operations/maintenance)
 - Toll revenues
- If financial analysis shows project worth negative, MV waived
- If financial analysis positive, value negotiated between TxDOT and CRRMA



CMP Financial Plan

- Projects 12 and 14b – EPMPO funds to finance
- Project Finance Scenarios
 - Scenario 1: Partial financing with EPMPO funds
 - shortfall **\$12.0 M**
 - Scenario 2: Partial financing with EPMPO funds
 - shortfall **\$106.3 M**



CRRMA Toll Implementation Plan

- Questions

