



Camino Real Regional
Mobility Authority

CRRMA



2008 Comprehensive Mobility Plan

Partners for Mobility

July 2008

2008 Comprehensive Mobility Plan

- Background
- Plan Elements
 - Roadway Projects
 - Transit Projects
 - Aesthetics/Roadway Improvements
 - CRRMA Projects
- Next Steps

Background

■ Challenges

- Rapid Growth
- Funding

■ Solutions

- Comprehensive Mobility Plan
 - Regional
 - Multimodal
 - Based on El Paso MPO's TransBorder Mobility Plan (August 2007)
 - Innovative Financing
- Partnerships
 - El Paso MPO, City of El Paso, CRRMA, & TxDOT

2008 Comprehensive Mobility Plan - July 17, 2008 - Conceptual

El Paso District
(In Millions)



Central Real
Regional Mobility
Authority



EXHIBIT A

Roadways

Map #	HIGHWAY	DESCRIPTION	Ready to Let Year	Construction Cost (YOE)	Cat 1	Cat 2	Cat 5	Cat 7	Cat 10	Cat 11	CBI	Estim. TRZ Bond	Estim. Toll Revenue Bond	Other TBD	Project Developer
1	LP 375 (Woodrow Bean Transmountain West)	I-10 to State Park, widen from 2 to 4 lane divided, no grade sep. or direct conn.	2009	\$17							\$17				TxDOT
2	I-10 @ UTEP	Interchange Improvements	2009	\$11		\$11									TxDOT
3	LP 375 (Woodrow Bean Transmountain Northeast)	Dyer to US 54, build 4 main lanes	2010	\$60		\$27					\$25	\$8			CRRMA
4	FM 76 (North Loop)	City limits to FM 1281 widen from 2 to 4 lanes	2010	\$17	\$8					\$9					TxDOT
5	LP 375 @ FM 659	Interchange Improvements, incl'd 2 connectors	2011	\$24		\$17						\$7			CRRMA
6	I-10 @ LP 375 (Americas)	Build 2 connectors (out of 8)	2011	\$82		\$32						\$50			CRRMA
7	Horizon / Buford	FM 76 to SH 20 widening from 2 to 4 lanes	2011	\$9	\$2	\$3		\$4							TxDOT
8	SPUR 276 (LP 375 Re-alignment)	From north of Borderland to west of I-10	2011	\$27				\$17	\$6					\$4	TxDOT
		subtotal		\$247	\$10	\$90	\$0	\$21	\$6	\$9	\$42	\$65	\$0	\$4	

Transit

9	SH 20 (Mesa) - Phase I	SH 20 (Mesa) From Doniphan to UTEP	2010	\$25		\$24	\$1								City of El Paso
10	US 62/180 (Montana) - Phase I	US 62/180 (Montana) from Hueco Club Park to Alway	2011	\$2		\$1	\$1								City of El Paso
		subtotal		\$27	\$0	\$25	\$2	\$0	\$0	\$0	\$0	\$0	\$0	\$0	

Highway Improvements

11	I-10	I-10 from LP 375 (Transmountain) to LP 375 (Joe Battle/Americas)	2010	\$10		\$5						\$5			City of El Paso
		subtotal		\$10	\$0	\$5	\$0	\$0	\$0	\$0	\$0	\$5	\$0	\$0	
		Grand Total		\$284	\$10	\$120	\$2	\$21	\$6	\$9	\$42	\$70	\$0	\$0	

CRRMA

	HIGHWAY	DESCRIPTION	Ready to Let Year	Total Project Cost (2008)	Cat 1	Cat 2	Cat 5	Cat 7	Cat 10	Cat 11	CBI	Estim. TRZ Bond	Estim. Toll Revenue Bond	Other TBD	Project Developer
12	LP375 (Cesar Chavez) PHASE I Southern Corridor	Add 2 express toll lanes	TBD	\$74					\$5				\$36		CRRMA
13	LP 375 (Keystone BHW Extension Part1) PHASE II Southern Corridor	Build 4-lane toll connection (Park to Schuster) & Schuster Re-alignment & connection	TBD	\$226		\$151							\$60	\$53	CRRMA
14	LP 375 (BHW Extension Part 2 and Americas) I-10 (CD lanes, Sunland Park to LP 375) PHASE III Southern Corridor	Build 4-lane elevated toll (Schuster to I-10 at Sunland interchange) & add 2 express toll lanes at Americas (Zaragoza to I-10) Collector Distributor Lanes (Mesa to Sunland Park) Add 2 toll express lanes (Sunland Park interchange to Loop 375 Transmountain)	TBD	\$426									\$154	\$272	CRRMA
15	Northeast Parkway	Right of Way acquisition for ultimate design	TBD	\$30		\$0							\$0	\$30	CRRMA
		RMA Total		\$756	\$0	\$151	\$0	\$0	\$5	\$0	\$0	\$0	\$250	\$355	

Note: TxDOT will develop I-10 operational improvements and numerous rehabilitation and safety projects.

UTP 2008-2019 Revenues
Cat 2 / TMF = \$ 271
CBI = \$ 42
TOTAL = \$ 313

2008 COMPREHENSIVE MOBILITY PLAN

NEW MEXICO

TEXAS



Camino Real
Regional Mobility Authority
CRRMA



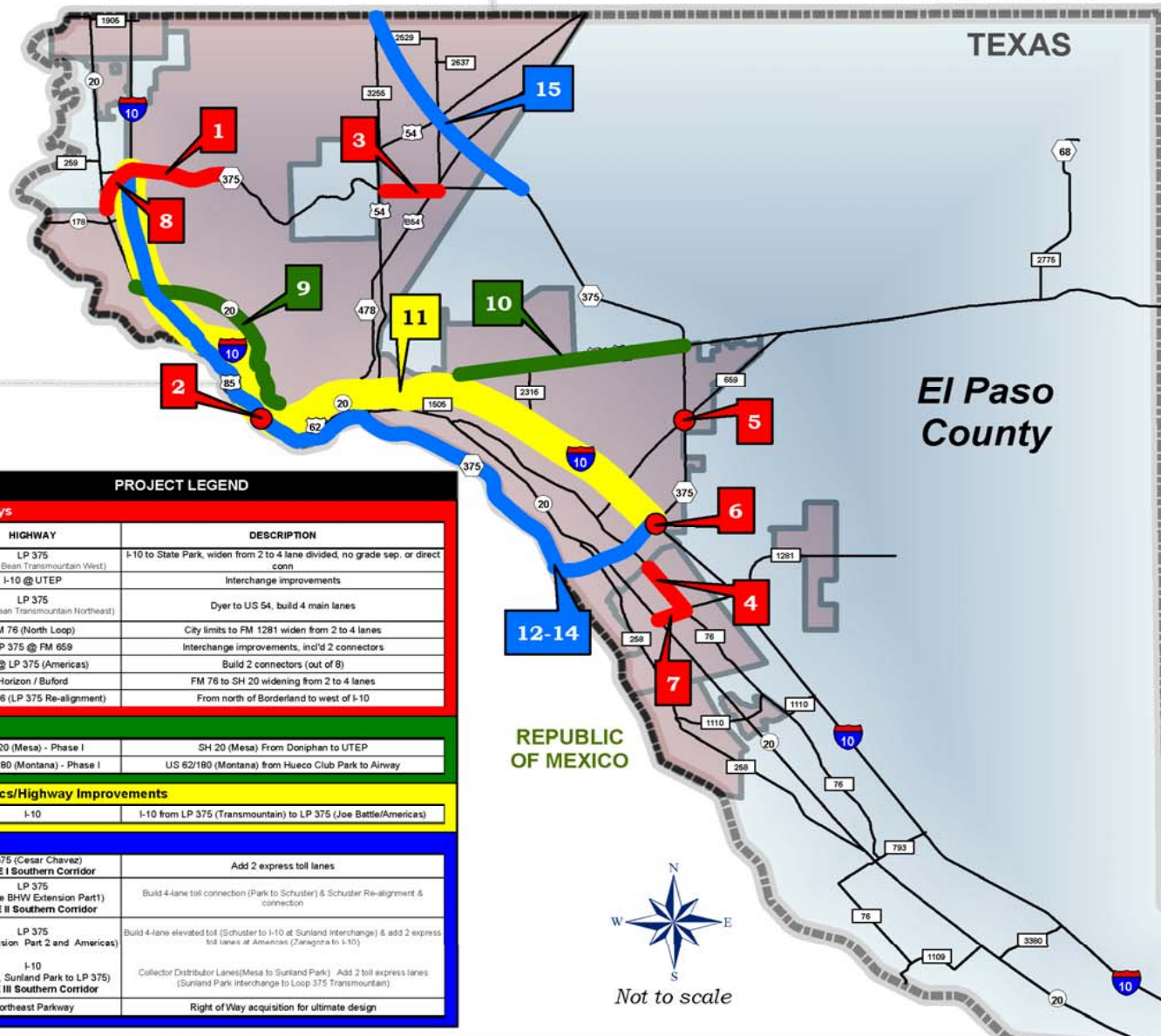
Revised: July 21, 2008

PROJECT LEGEND		
Roadways		
Map #	HIGHWAY	DESCRIPTION
1	LP 375 (Woodrow Bean Transmountain West)	I-10 to State Park, widen from 2 to 4 lane divided, no grade sep. or direct conn
2	I-10 @ UTEP	Interchange improvements
3	LP 375 (Woodrow Bean Transmountain Northeast)	Dyer to US 54, build 4 main lanes
4	FM 76 (North Loop)	City limits to FM 1281 widen from 2 to 4 lanes
5	LP 375 @ FM 659	Interchange improvements, incl'd 2 connectors
6	I-10 @ LP 375 (Americas)	Build 2 connectors (out of 8)
7	Horizon / Buford	FM 76 to SH 20 widening from 2 to 4 lanes
8	SPUR 276 (LP 375 Re-alignment)	From north of Borderland to west of I-10
Transit		
9	SH 20 (Mesa) - Phase I	SH 20 (Mesa) From Doniphan to UTEP
10	US 62/180 (Montana) - Phase I	US 62/180 (Montana) from Hueco Club Park to Airway
Aesthetics/Highway Improvements		
11	I-10	I-10 from LP 375 (Transmountain) to LP 375 (Joe Battle/Americas)
CRRMA		
12	LP375 (Cesar Chavez) PHASE I Southern Corridor	Add 2 express toll lanes
13	LP 375 (Keystone BHW Extension Part I) PHASE II Southern Corridor	Build 4-lane toll connection (Park to Schuster) & Schuster Re-alignment & connection
14	LP 375 (BHW Extension Part 2 and Americas) PHASE III Southern Corridor	Build 4-lane elevated toll (Schuster to I-10 at Sunland Interchange) & add 2 express toll lanes at Americas (Zaragoza to I-10)
15	I-10 (CD lanes, Sunland Park to LP 375) Northeast Parkway	Collector Distributor Lanes (Mesa to Sunland Park) Add 2 toll express lanes (Sunland Park Interchange to Loop 375 Transmountain) Right of Way acquisition for ultimate design

REPUBLIC OF MEXICO



Not to scale



2008 COMPREHENSIVE MOBILITY PLAN

NEW MEXICO

TEXAS

El Paso County

Roadway Projects

PROJECT LEGEND

Roadways

Map #	HIGHWAY	DESCRIPTION
1	LP 375 (Woodrow Bean Transmountain West)	I-10 to State Park, widen from 2 to 4 lane divided, no grade sep. or direct conn
2	I-10 @ UTEP	Interchange improvements
3	LP 375 (Woodrow Bean Transmountain Northeast)	Dyer to US 54, build 4 main lanes
4	FM 76 (North Loop)	City limits to FM 1281 widen from 2 to 4 lanes
5	LP 375 @ FM 659	Interchange improvements, incl'd 2 connectors
6	I-10 @ LP 375 (Americas)	Build 2 connectors (out of 8)
7	Horizon / Buford	FM 76 to SH 20 widening from 2 to 4 lanes
8	SPUR 276 (LP 375 Re-alignment)	From north of Borderland to west of I-10

REPUBLIC
OF MEXICO



Not to scale



Camino Real
Regional Mobility Authority
CRRMA

El Paso MPO

Revised: July 18, 2008

2008 COMPREHENSIVE MOBILITY PLAN

NEW MEXICO

TEXAS

REPUBLIC OF MEXICO

El Paso County

Transit Projects

PROJECT LEGEND

Transit

	HIGHWAY	DESCRIPTION
9	SH 20 (Mesa)	SH 20 (Mesa) From Doniphan to UTEP
10	US 62/180 (Montana)	US 62/180 (Montana) from Hueco Club Park to Airway

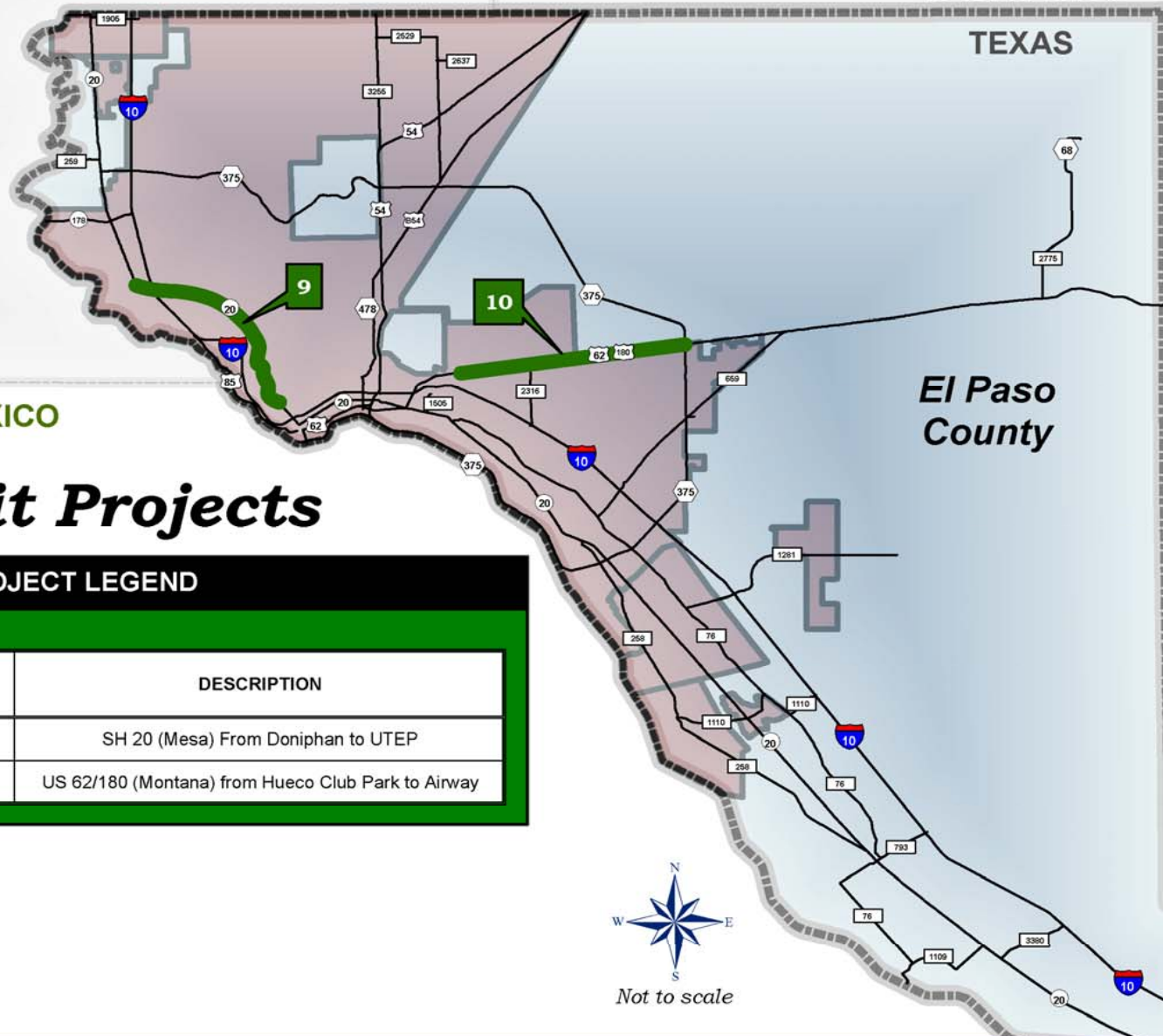


EL PASO DISTRICT

Revised: July 11, 2008



Not to scale



TEXAS

REPUBLIC OF MEXICO

LP 375 (Transmountain) to
LP 375 (Joe Battle/Americas)



**Camino Real
Regional Mobility Authority
CRRMA**



Not to scale

Revised: July 18, 2008

2008 COMPREHENSIVE MOBILITY PLAN

Camino Real Regional Mobility Authority (CRRMA) Projects

NEW MEXICO

TEXAS

El Paso County

REPUBLIC OF MEXICO



Not to scale

PROJECT LEGEND

CRRMA

	HIGHWAY	DESCRIPTION
12	LP375 (Cesar Chavez) PHASE I Southern Corridor	Add 2 express toll lanes
13	LP 375 (Keystone) PHASE II Southern Corridor	Build 4-lane toll connection (Park to Schuster) & Schuster Re-alignment
14	LP 375 (BHW, Americas) & I-10 (CD lanes, Sunland Park to LP 375) PHASE III Southern Corridor	Build 4-lane elevated toll, add toll-express lanes
15	Northeast Parkway	Right of Way acquisition for ultimate design

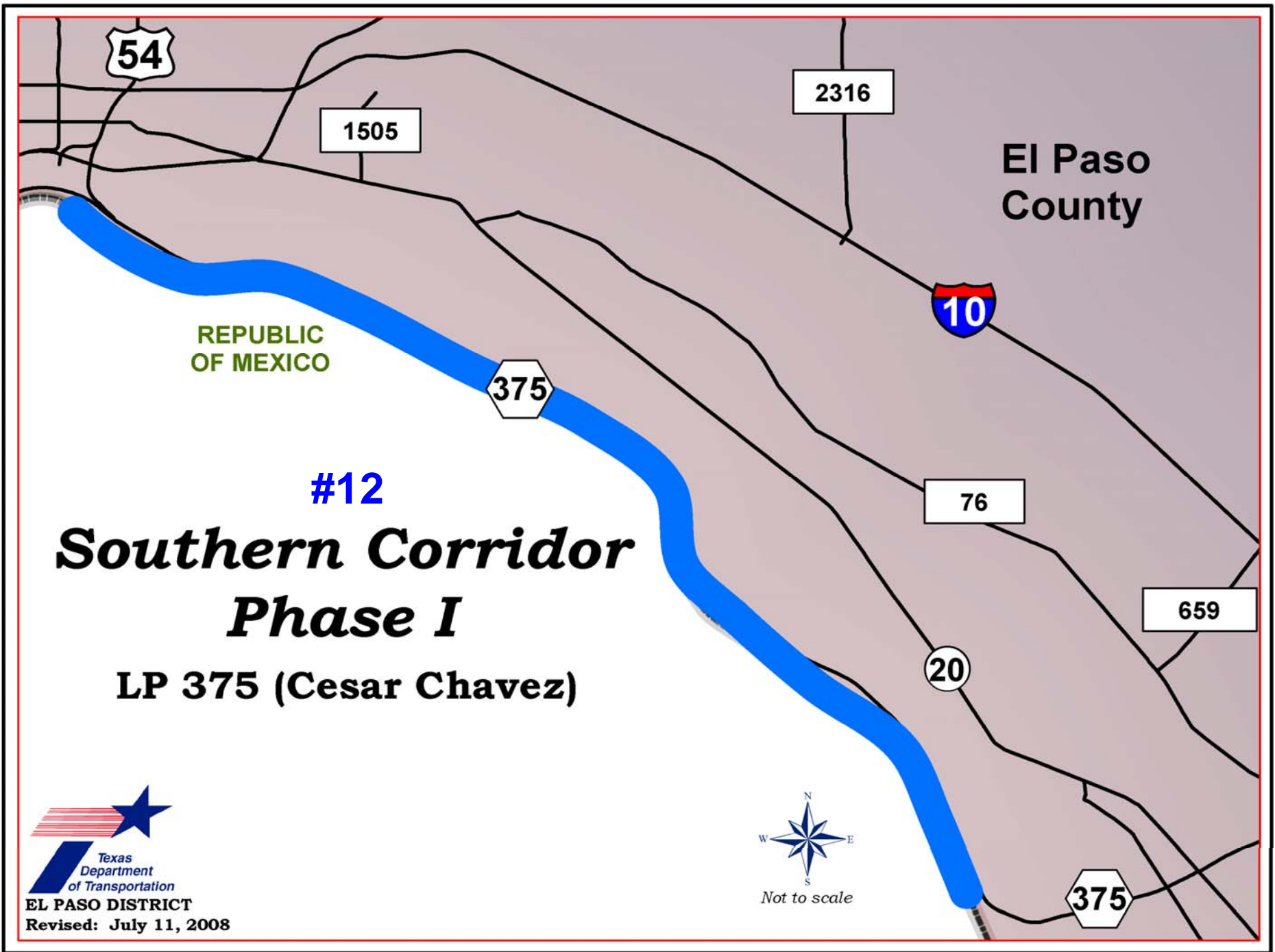


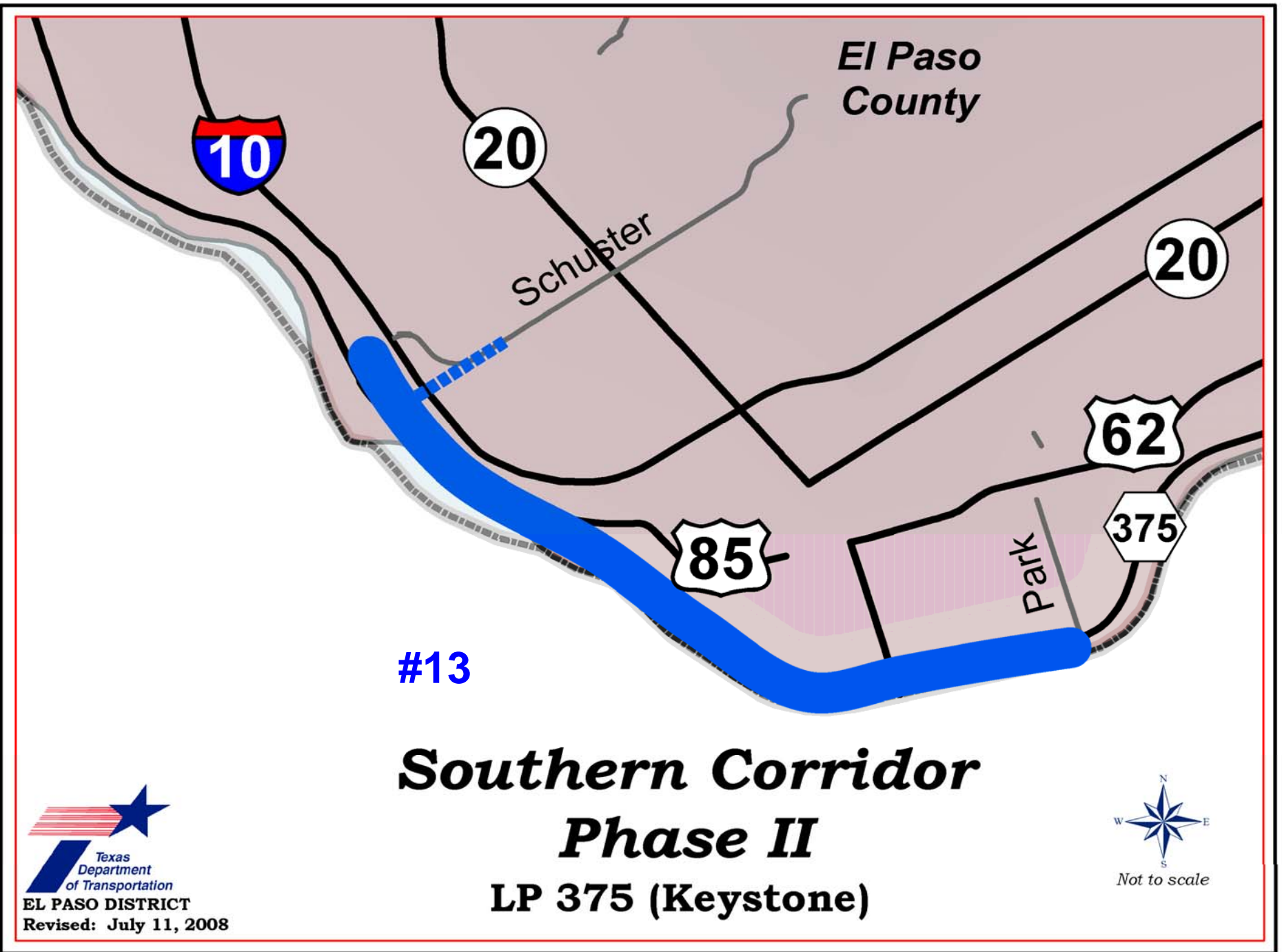
Revised: July 18, 2008

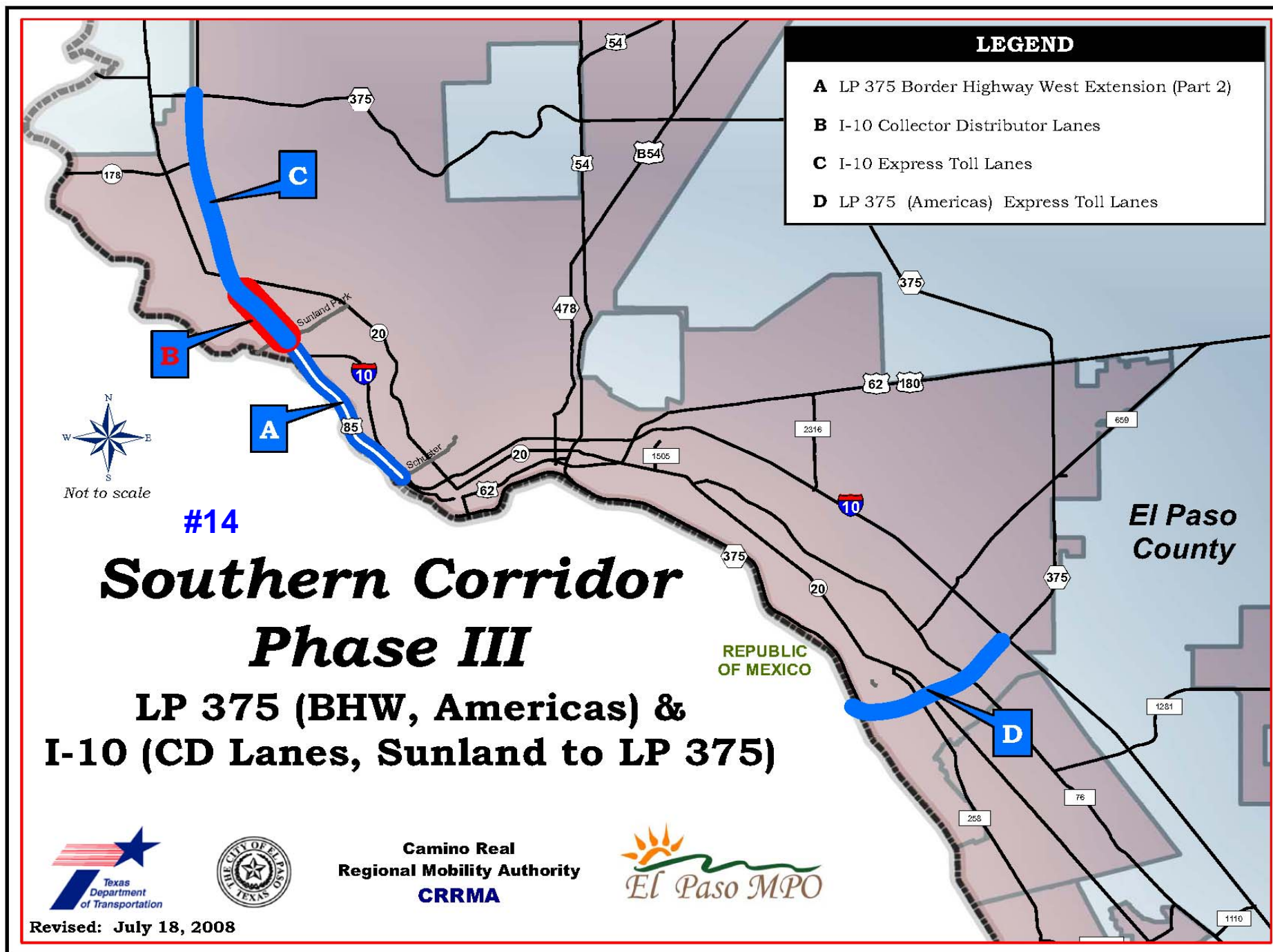


Camino Real
Regional Mobility Authority
CRRMA



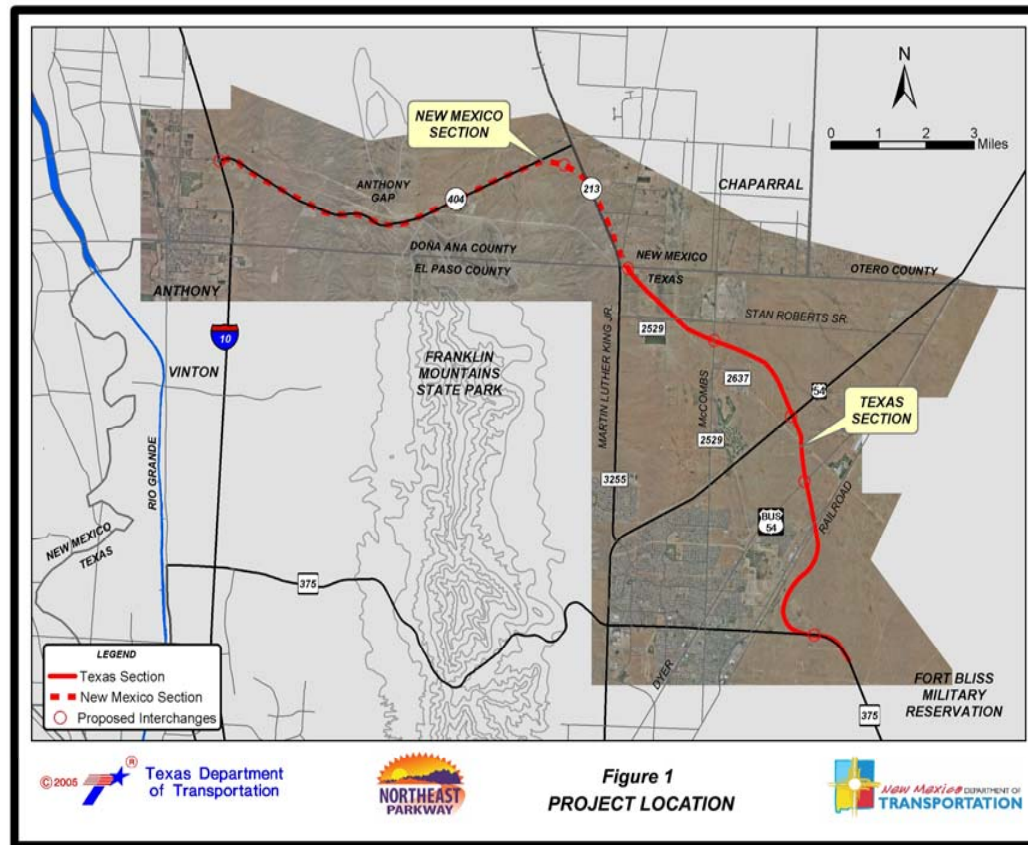






Northeast Parkway # 15

Texas Section ROW Acquisition for Ultimate Design



POTENTIAL TRANSPORTATION REINVESTMENT ZONE (TRZ) CORRIDORS

NEW MEXICO

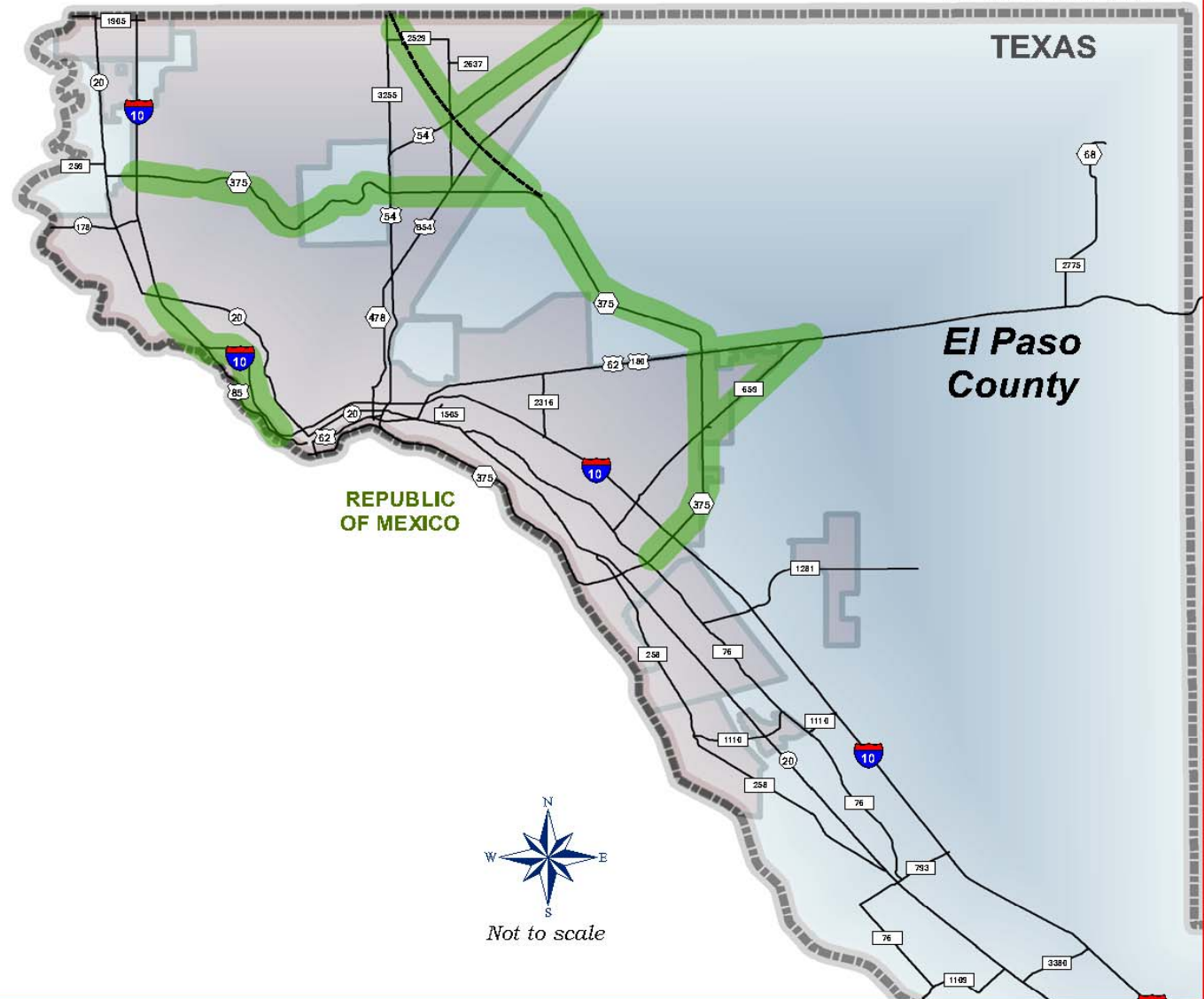
TEXAS



Camino Real
Regional Mobility Authority
CRRMA



Revised: July 22, 2008



Next Steps

- Include the 2008 CMP projects in the MPO's Metropolitan Transportation Plans
- Develop & Deliver
- Provide public outreach and awareness for the region's mobility needs
- Continue to work together to improve multimodal mobility plans

Questions?



Camino Real Regional
Mobility Authority

CRRMA

